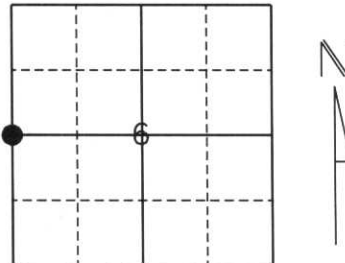


U.S. PUBLIC LAND SURVEY MONUMENT RECORD

Note: This form is intended and designed to fulfill all requirements of Wisconsin Administrative Code, Chapter A-E 5.02, U.S. Public Land Survey Monument Record (3) (a) (b) (c) (d) (e) (f) (g) (h) (i). An additional sheet may be added if necessary to conform with said requirements.

(a) Corner location: Township 33 North
 Range 7 East
 Town/City/Village Birch
 County Lincoln



Section 6

(b) (f) (g) (h) Description of monument found at this corner and if it was accepted, state all evidence (material, testimonial, occupational, plats, records, other monuments) used as a basis for accepting. If not accepted or if nothing was found, state evidence used as a basis for establishing location. If reestablished through lost corner proportionate methods, indicate all monuments, distances and directions used to establish.

History of original corner establishment:

Originally 1851 by James Marsh. Original corner was a wooden post with bearing trees:
 10" Cedar, S6°W, 38 lks.
 12" Tamarac, N12°E, 23 lks.

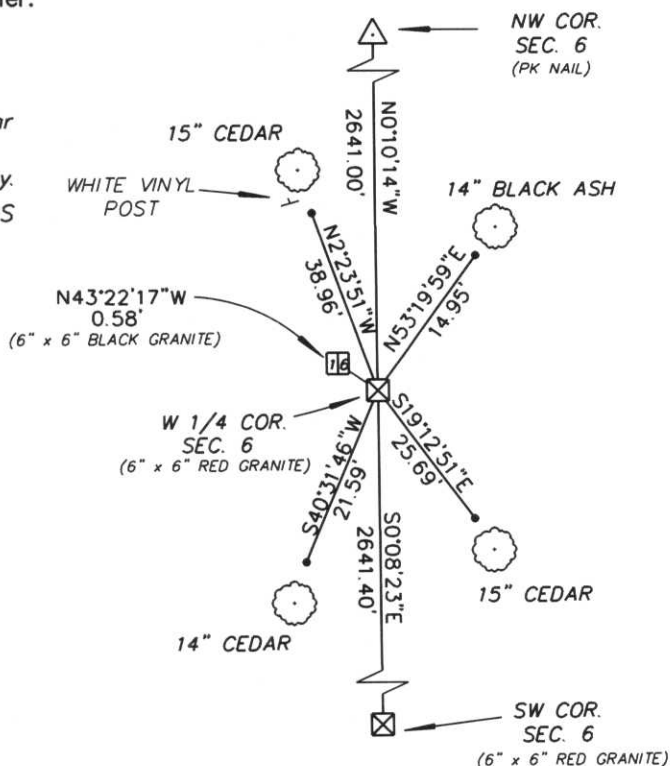
Revisited in 1939 by Francis Fox where he found a 6" x 6" Red Granite Stone and left a 6" x 6" Black Granite close by, marked 1/6 to show location.

Description of corner evidence found:

We found the 6" x 6" Red Granite Stone that was placed in the early 1900's by an unknown surveyor. We also found the Black Granite Stone set by Francis Fox. We accepted the Red Granite Stone as the earliest set monument and tied to witness monuments approx. 2 feet from bearing trees.

(c) (d) (e) Plan view of corner with ties to at least 4 witness monuments. If in disagreement with previously established corner, show the distances between the two corners and also indicate the ties to the disputed corner.

- * NOTE: Drawing not to scale.
- All ties are to 7/8" Rebar with Lincoln County Caps approximately 2 feet away.
- 7/8" REBAR W/ L.C. CAPS



RECEIVED AT LINCOLN COUNTY
 COURTHOUSE THIS 20TH DAY
 OF December 20 02
 LAND INFORMATION OFFICE

(i) I, William W. Nutter RLS, S-2299
 (type or print name) certify that the corner location on this record was determined by me or under my direction and control and that this U.S. Public Land Survey Monument Record is correct and complete to the best of my knowledge and belief.

William W. Nutter, RLS
 Signature

12-17-2002
 Date

Index No. C-1















