

U S PUBLIC LAND SURVEY MONUMENT RECORD

NOTE: This form is intended and designed to fulfill all requirements of Wisconsin Administrative Code, Chapter A-E 7.08 U.S. Public Land Survey Monument Record (3) (a-i)

A-E 7.08(3)(a) Identity of corner:
SOUTH 1/4 CORNER SECTION 01,
TOWNSHIP 33 NORTH,
RANGE 06 EAST OF THE 4TH PM,
TOWN OF ROCK FALLS,
COUNTY OF LINCOLN

WISCORS - LINCOLN COUNTY
N: 190,266.526 USft (190,266.540)
E: 393,937.305 USft (393,937.499)
Datum: NAD83 (2011)
GNSS Method RTN - Direct
GNSS Control WISCORS VRS



The coordinate value shown has been verified by the average of two or more GPS observations at a markedly different time. Coordinates shown in parenthesis are provided by Lincoln County.

A-E 7.08(3)(b)

Original Surveyor: Jackson L. Prentice

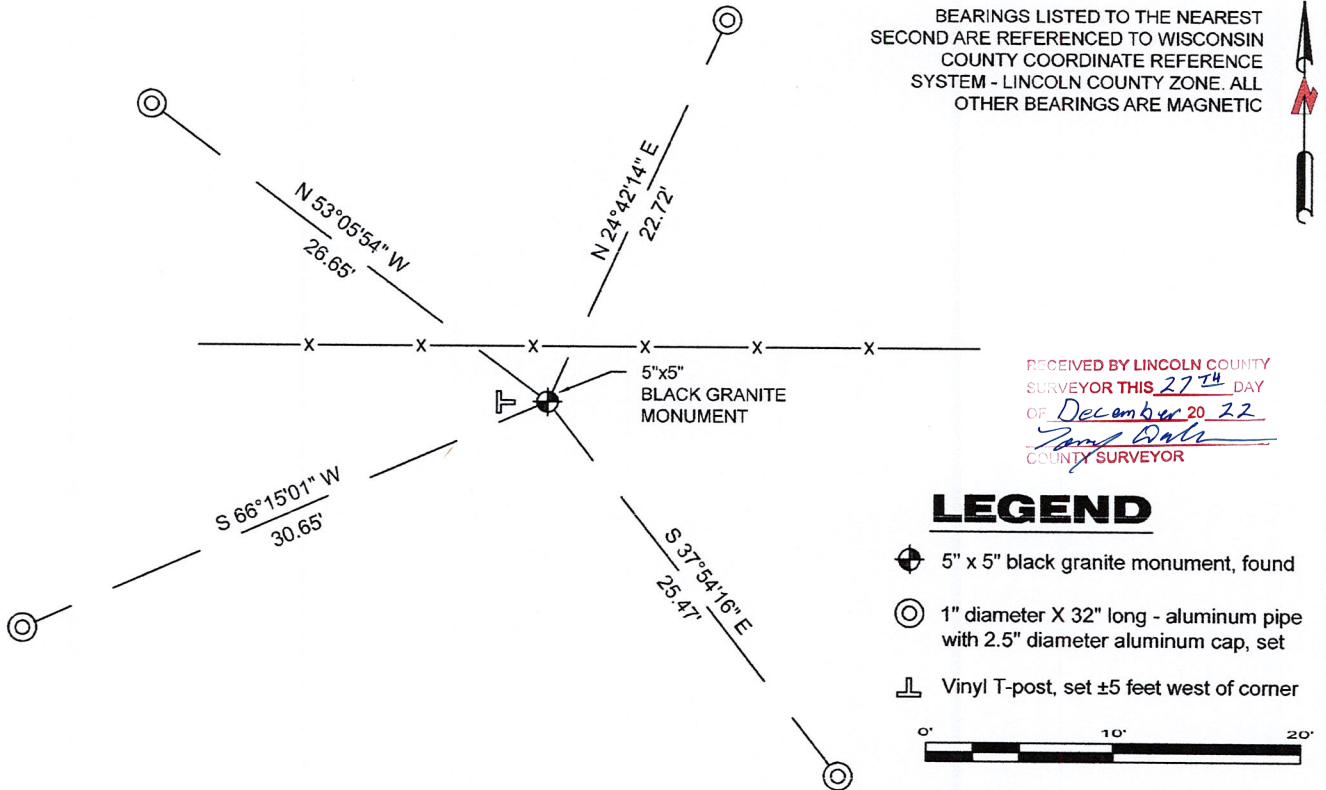
Date of Original Survey Commenced: October 27, 1852
Completed: November 9, 1852

Original Accessories:
Birch 10 N 7° W 9 links
Elm 8 S 43° W 28 links

1941 - Francis X. Fox (aka Francis X. Fuchs) - Survey of TWP., 32 & 33 N. ~ R.6 E. Town of Rock Falls - indicates "set corners to all forties on all quarter & section lines" on Map M136A.

November 30, 2022 - While performing the 2022 Lincoln County PLSS Corner Remonumentation and GPS Services project, I found a 5" x 5" black granite stone near the computed position provided by Lincoln County. The monument is ±3 feet north of an old barbed wire fence. I established 4 new reference monuments as shown below.

A-E 7.08(3)(c)(d) Plan view of corner with references to at least 4 witness monuments.



A-E 7.08(3)(e) 1852 Surveyor set a post, 1941 Surveyor set a granite stone monument. I found a 5" x 5" black granite stone.

A-E 7.08(3)(f) I accept this monument as a FOUND PERPETUATED LOCATION of the corner.

A-E 7.08(3)(g)(h) This corner was not determined through lost-corner-proportionate methods.

A-E 7.08(3)(i) I, Jeffrey L. DeMuth, Professional Land Surveyor No. S-2656, hereby certify that the corner location on this record was determined by the Lincoln County Surveyor, and the monuments found or set as shown hereon were measured by me or under my direction and control, and that this U.S. Public Land Survey Monument Record is correct and complete to the best of my knowledge, and belief.

Jeffrey L. DeMuth

SIGNATURE

December 14, 2022

DATE



E-23

REPORT

2022-Lincoln County PLSS Corner Remonumentation and GPS Services

Wisconsin Corner Point Identification Number: 43306010020

Surveyor: Jeffrey L. DeMuth – S2656

Corner monument: Found 5" x 5" black granite stone.

Field Book: Cardinal North – Lincoln Co. Remon. – 2022-00

Page: 71

Horizontal Datum: WisCRS – Lincoln County Zone – NAD83(2011)

Date / time of initial measurement:

November 30, 2022 - Start 13:09:48 CST – End 13:30:43 CST

Reference monuments:

4 – Set - 1" diameter X 32" long aluminum pipe with 2.5" diameter Lincoln Co. aluminum cap.

Coordinate Table

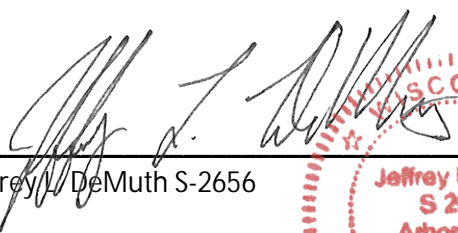
	County Provided	2022 Measurement	Difference
North	190266.540	190266.526	0.01
East	393937.499	393937.305	0.19

Observed coordinates match with existing coordinates within reason.

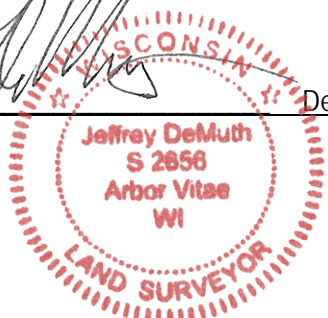
Request Data Log for more information.

Additional Notes:

Corner falls ± 3 feet north of old E-W fence line.


Jeffrey L. DeMuth S-2656

December 01, 2022
Date



43306010020_Mon-N



43306010020_North



43306010020_West



43306010020_South



43306010020_East

