

RECEIVED BY LINCOLN COUNTY
 SURVEYOR THIS 11TH DAY
 OF November 20 04
Tom Vahl
 COUNTY SURVEYOR

U.S. PUBLIC LAND SURVEY MONUMENT RECORD

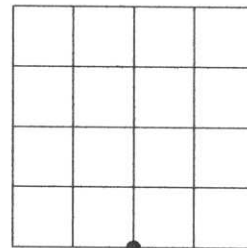
Note: This form is intended and designed to fulfill all requirements of the Wisconsin Administrative Code, Chapter A-E 7.08 U.S. Public Land Monument Record (3)(a)(b)(c)(d)(e)(f)(g)(h)(i). An additional sheet may be added if necessary to conform with said requirements.

(a) CORNER LOCATION:

south quarter corner of Section 36
 Township 33 North
 Range 5 East
 Town of Harding
 County of Lincoln

COORDINATES

North:
 East:
 Control Station:
 Latitude:
 Longitude:
 Datum Method



SECTION 36

(b) HISTORY OF ORIGINAL CORNER ESTABLISHMENT

Original Surveyor: J.M. Marsh
 Date of Survey: Commenced July 1851
 Completed August 1851

Original B.T.'S
 Hemlock 12" dia., N32°E 29 links
 Hemlock 10" dia., S85°W 6 links

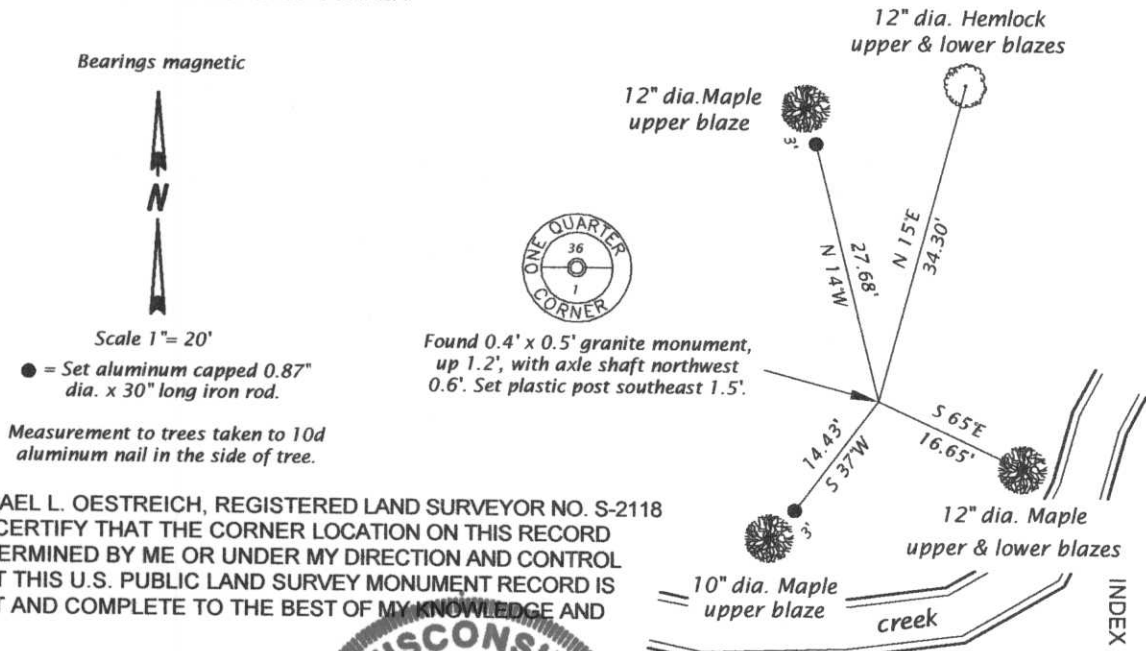
(f)(g)(h) DESCRIPTION OF MONUMENT FOUND AT THIS CORNER AND IF IT WAS ACCEPTED, STATE ALL EVIDENCE (MATERIAL, TESTIMONIAL, OCCUPATIONS, PLATS, RECORDS, OTHER MONUMENTS) USED AS A BASIS FOR ESTABLISHING LOCATION. IF NOT ACCEPTED OF IF NOTHING WAS FOUND, STATE EVIDENCE USED AS BASIS FOR ESTABLISHING LOCATION. IF REESTABLISHED THROUGH LOST CORNER PROPORTIONATE METHODS, INDICATE ALL MONUMENTS, DISTANCES AND DIRECTIONS USED TO ESTABLISH. INDICATE TYPE OF MONUMENT AND SIGN POST FOUND OR SET.

Original surveyor: J.M. Marsh, notes corner to be a 14" dia. Hemlock Tree.

Francis Fox: date unknown, East between Sections 1 & 36 at 2644.3 post for corner 1.6' north. ¼ stone set at old stake, 20' east to creek, 20' south to creek, Ash 14" dia. S70W 34.7' and Maple 5" dia. N68E 23.5'.

Michael L. Oestreich : July 2002, recovered 0.4' x 0.5' granite stone, with 36 & 1 chiseled on top, with axle shaft northwest 0.6'. Made new bearing trees and set reference monuments as shown in plan below.

(c)(d)(e) PLAN VIEW OF CORNER WITH TIES TO AT LEAST 4 WITNESS MONUMENTS. IF IN DISAGREEMENT WITH PREVIOUSLY ESTABLISHED CORNER, SHOW THE DISTANCE BETWEEN THE TWO CORNERS AND ALSO INDICATE THE TIES TO THE DISPUTED CORNER.



(i) I, MICHAEL L. OESTREICH, REGISTERED LAND SURVEYOR NO. S-2118 HEREBY CERTIFY THAT THE CORNER LOCATION ON THIS RECORD WAS DETERMINED BY ME OR UNDER MY DIRECTION AND CONTROL AND THAT THIS U.S. PUBLIC LAND SURVEY MONUMENT RECORD IS CORRECT AND COMPLETE TO THE BEST OF MY KNOWLEDGE AND BELIEF.

Michael L. Oestreich
 SIGNATURE



INDEX NO. Y-23



36







