

U.S. PUBLIC LAND SURVEY MONUMENT RECORD

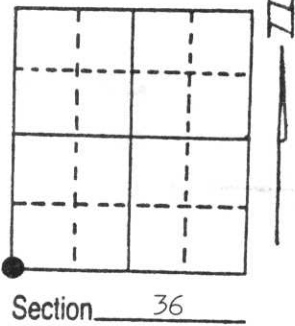
Note: This form is intended and designed to fulfill all requirements of Wisconsin Administrative Code, Chapter A-E 5.02, U.S. Public Land Survey Monument Record (3) (a) (b) (c) (d) (e) (f) (g) (h) (i). An additional sheet may be added if necessary to conform with said requirements.

(a) Corner location: Township 33 North

Range 5 East

Town/City/Village Harding

County Lincoln



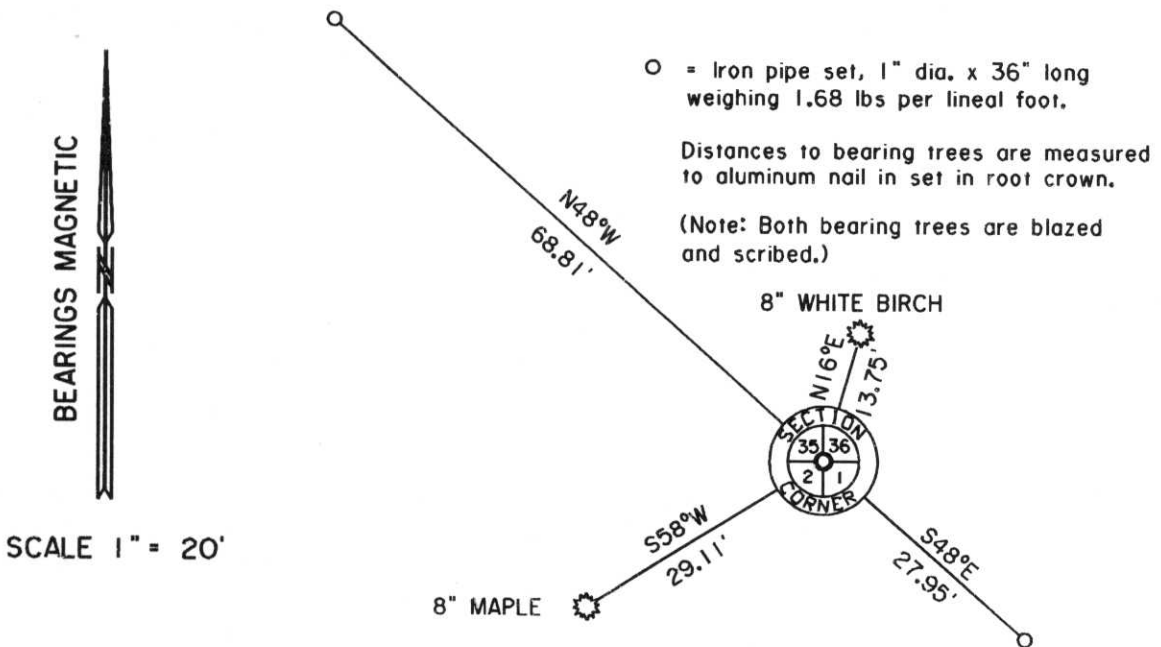
(b) (f) (g) (h) Description of monument found at this corner and if it was accepted, state all evidence (material, testimonial, occupational, plats, records, other monuments) used as a basis for accepting. If not accepted or if nothing was found, state evidence used as basis for establishing location. If reestablished through lost corner proportionate methods, indicate all monuments, distances and directions used to establish.

James Marsh, August 1851, at 80 chains set post for corners to Sections 1, 2, 35 and 36. Made the following bearing trees: Birch 16" S68°E 11 lks, Hemlock 10" S67°W 13 lks, Maple 10" N47°W 35 lks and Hemlock 8" N25°E 20 lks.

Francis Fox, 1937, notes the corner to be a stone.

Michael L. Oestreich, RLS 2118, March 1995, found and accepted a 6" x 6" granite monument. I set a 1" dia. x 36" long iron pipe 0.2' south, also set a 4" x 4" cedar post with placard 1.5' southeast. See plan view for descriptions and dimensions to witness monuments.

(c) (d) (e) Plan view of corner with ties to at least 4 witness monuments. If in disagreement with previously established corner, show the distances between the two corners and also indicate the ties to the disputed corner.



(i) I, Michael L. Oestreich RLS 2118
(type or print name) certify that the corner location on this record was determined by me or under my direction and control and that this U.S. Public Land Survey Monument Record is correct and complete to the best of my knowledge and belief.

Michael L Oestreich 4/5/95
Signature Date



Index No. 4-21









