

## U.S. PUBLIC LAND SURVEY MONUMENT RECORD

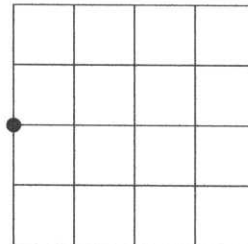
Note: This form is intended and designed to fulfill all requirements of the Wisconsin Administrative Code, Chapter A-E 7.08 U.S. Public Land Monument Record (3)(a)(b)(c)(d)(e)(f)(g)(h)(i). An additional sheet may be added if necessary to conform with said requirements.

**(a) CORNER LOCATION:**

west quarter corner of Section 35  
 Township 33 North  
 Range 5 East  
 Town of Harding  
 County of Lincoln

**COORDINATES**

North:  
 East:  
 Control Station:  
 Latitude:  
 Longitude:  
 Datum Method



**(b) HISTORY OF ORIGINAL CORNER ESTABLISHMENT**

SECTION 35

Original Surveyor: J.L. Prentice  
 Date of Survey: Commenced Nov. 1854  
 Completed Nov. 1854

Original B.T.'S  
 Birch 10" dia., N47°E 10 links  
 Birch 12" dia., S27°W 14 links

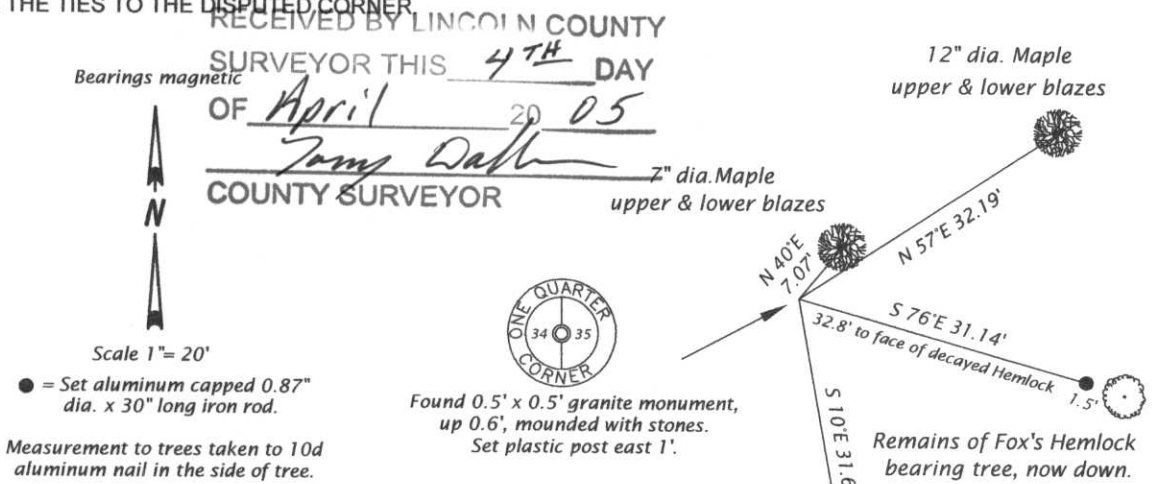
(f)(g)(h) DESCRIPTION OF MONUMENT FOUND AT THIS CORNER AND IF IT WAS ACCEPTED, STATE ALL EVIDENCE (MATERIAL, TESTIMONIAL, OCCUPATIONS, PLATS, RECORDS, OTHER MONUMENTS) USED AS A BASIS FOR ESTABLISHING LOCATION. IF NOT ACCEPTED OF IF NOTHING WAS FOUND, STATE EVIDENCE USED AS BASIS FOR ESTABLISHING LOCATION. IF REESTABLISHED THROUGH LOST CORNER PROPORTIONATE METHODS, INDICATE ALL MONUMENTS, DISTANCES AND DIRECTIONS USED TO ESTABLISH. INDICATE TYPE OF MONUMENT AND SIGN POST FOUND OR SET.

*Original Surveyor: Jackson L. Prentice, north between Sections 34 and 35 at 40 chains set corner quarter post.*

*Francis Fox: date unknown, south between Sections 34 and 35 at 2646.4 set 1/4 stone west 19.25', Hemlock 9" S78E 33.0', mounded with stone.*

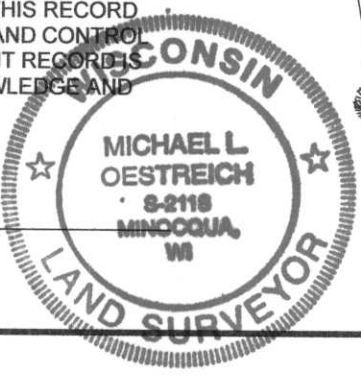
*Michael L. Oestreich: March 2005, recovered 0.5' x 0.5' granite stone, with 34 and 35 chiseled on top, mounded with stones. Also recovered decaying +/- 15" dia. Hemlock Tree, now down S76E +/- 32.8' to face of tree. Made new bearing trees and set reference monuments as shown in plan below.*

(c)(d)(e) PLAN VIEW OF CORNER WITH TIES TO AT LEAST 4 WITNESS MONUMENTS. IF IN DISAGREEMENT WITH PREVIOUSLY ESTABLISHED CORNER, SHOW THE DISTANCE BETWEEN THE TWO CORNERS AND ALSO INDICATE THE TIES TO THE DISPUTED CORNER.



(i) I, MICHAEL L. OESTREICH, REGISTERED LAND SURVEYOR NO. S-2118 HEREBY CERTIFY THAT THE CORNER LOCATION ON THIS RECORD WAS DETERMINED BY ME OR UNDER MY DIRECTION AND CONTROL AND THAT THIS U.S. PUBLIC LAND SURVEY MONUMENT RECORD IS CORRECT AND COMPLETE TO THE BEST OF MY KNOWLEDGE AND BELIEF.

*Michael L. Oestreich* 3/25/05  
 SIGNATURE DATE



INDEX NO. 62-17









