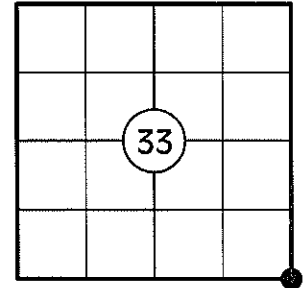


U.S. PUBLIC LAND SURVEY MONUMENT RECORD

NOTE: THIS FORM IS INTENDED AND DESIGNED TO FULFILL ALL REQUIREMENTS OF WISCONSIN ADMINISTRATIVE CODE CHAPTER A-E 7.08 U.S. PUBLIC LAND SURVEY MONUMENT RECORD (3) (a)(b)(c)(d)(e)(f)(g)(h)(i). AN ADDITIONAL SHEET MAY BE ADDED IF NECESSARY TO CONFIRM WITH SAID REQUIREMENTS.

(a) CORNER LOCATION:

SE CORNER OF SECTION 33
TOWNSHIP 33 NORTH
RANGE 5 EAST
TOWN OF HARDING
COUNTY OF LINCOLN



(b) HISTORY OF ORIGINAL CORNER:

ORIGINAL SURVEYOR: J.M. MARSH
DATE OF SURVEY: JULY - AUGUST, 1851

ORIGINAL BEARING TREES: 10" SUGAR - S31°E, 17 LKS
13" TAMARACK - S53°W, 26 LKS
8" W. PINE - N40°W, 13 LKS
8" HEMLOCK - N79°E, 46 LKS

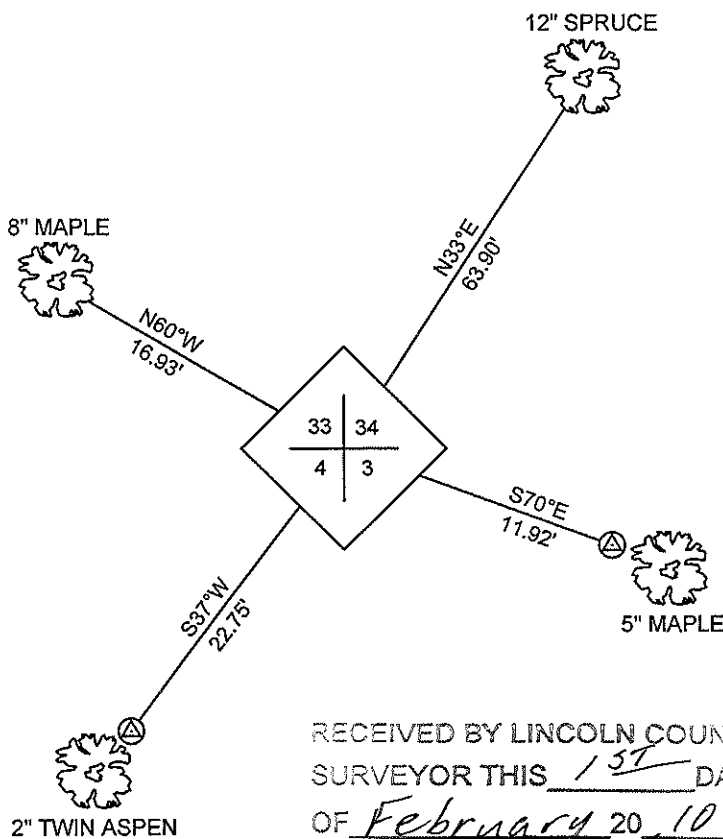
(f)(g)(h) DESCRIPTION OF MONUMENT FOUND AT THIS CORNER AND IF IT WAS ACCEPTED STATE ALL EVIDENCE (MATERIAL, TESTIMONIAL, OCCUPATIONAL, PLATS, RECORDS, OTHER MONUMENTS) USED AS A BASIS FOR ESTABLISHING LOCATION. IF REESTABLISHING THROUGH LOST CORNER PROPORTIONATE METHODS, INDICATE ALL MONUMENTS, DISTANCES, AND DIRECTIONS USED TO ESTABLISH. INDICATE TYPE OF MONUMENT AND SIGN POST FOUND OR SET.

1851: J. M. MARSH SET THE ORIGINAL SECTION CORNER POST.

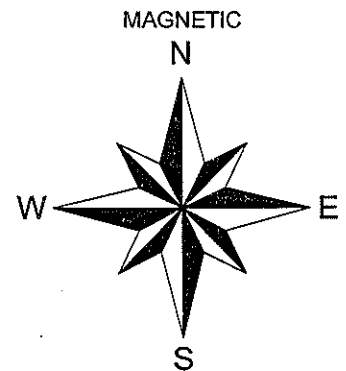
1930'S: FRANCIS FOX SET A STONE MONUMENT IN PLACE OF AN IRON PIPE AND NOTED A 17" PINE STUMP S88°E, 36.0' AND A 14" PINE STUMP N29°W, 32.1'.

01/05/2010: I FOUND A 6" SQUARE GRANITE MONUMENT WITH A 1-1/4" DIA. IRON PIPE SET ALONG THE NORTHEAST SIDE OF THE MONUMENT. I SET A PLASTIC POST 1' NORTH OF THE MONUMENT, MADE TWO BEARING TREES AND SET TWO 3/4" DIA. CAPPED REBAR REFERENCE MONUMENTS AS SHOWN BELOW.

(c)(d)(e) PLAN VIEW OF CORNER WITH TIES TO AT LEAST FOUR WITNESSES. IF IN DISAGREEMENT WITH PREVIOUSLY ESTABLISHED CORNER, SHOW THE DISTANCES BETWEEN THE TWO CORNERS AND ALSO INDICATE THE TIE TO THE DISPUTED CORNER.

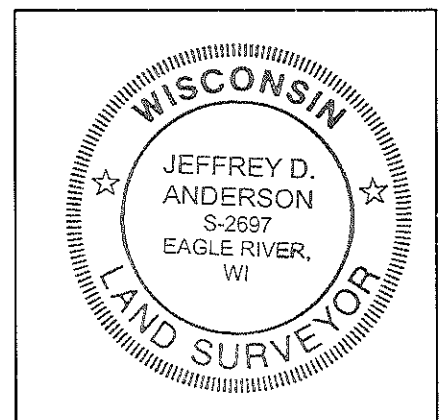


⊕ 3/4" DIA. CAPPED REBAR SET



NOT TO SCALE
DISTANCES TO BT'S ARE TO NAIL IN SIDE

RECEIVED BY LINCOLN COUNTY
SURVEYOR THIS 15TH DAY
OF February 20, 10
Tom Daller
COUNTY SURVEYOR



INDEX NO. Y-13

I JEFFREY D. ANDERSON, REGISTERED LAND SURVEYOR NO. 2697, HEREBY CERTIFY THAT THE CORNER LOCATION ON THIS RECORD WAS REFERENCED BY ME OR UNDER MY DIRECTION AND CONTROL AND THAT THIS U.S. PUBLIC LAND SURVEY MONUMENT RECORD IS COMPLETE TO THE BEST OF MY KNOWLEDGE AND BELIEF.

Jeffrey D. Anderson 1/26/10
SIGNATURE

SOUTHEAST CORNER, SECTION 33 – 6" SQUARE GRANITE STONE FOUND



FACING NORTH



FACING SOUTH



FACING EAST



FACING WEST

