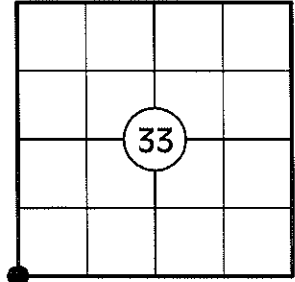


U.S. PUBLIC LAND SURVEY MONUMENT RECORD

NOTE: THIS FORM IS INTENDED AND DESIGNED TO FULFILL ALL REQUIREMENTS OF WISCONSIN ADMINISTRATIVE CODE CHAPTER A-E 7.08 U.S. PUBLIC LAND SURVEY MONUMENT RECORD (3) (a)(b)(c)(d)(e)(f)(g)(h)(i). AN ADDITIONAL SHEET MAY BE ADDED IF NECESSARY TO CONFIRM WITH SAID REQUIREMENTS.

(a) CORNER LOCATION:

SW CORNER OF SECTION 33
 TOWNSHIP 33 NORTH
 RANGE 5 EAST
 TOWN OF HARDING
 COUNTY OF LINCOLN



(b) HISTORY OF ORIGINAL CORNER:

ORIGINAL SURVEYOR: J.M. MARSH
 DATE OF SURVEY: JULY - AUGUST, 1851

ORIGINAL BEARING TREES: 8" BIRCH - S58°E, 23 LKS
 12" TAMARACK - S61°W, 17 LKS
 14" W. PINE - N23°W, 18 LKS
 12" TAMARACK - N77°E, 23 LKS

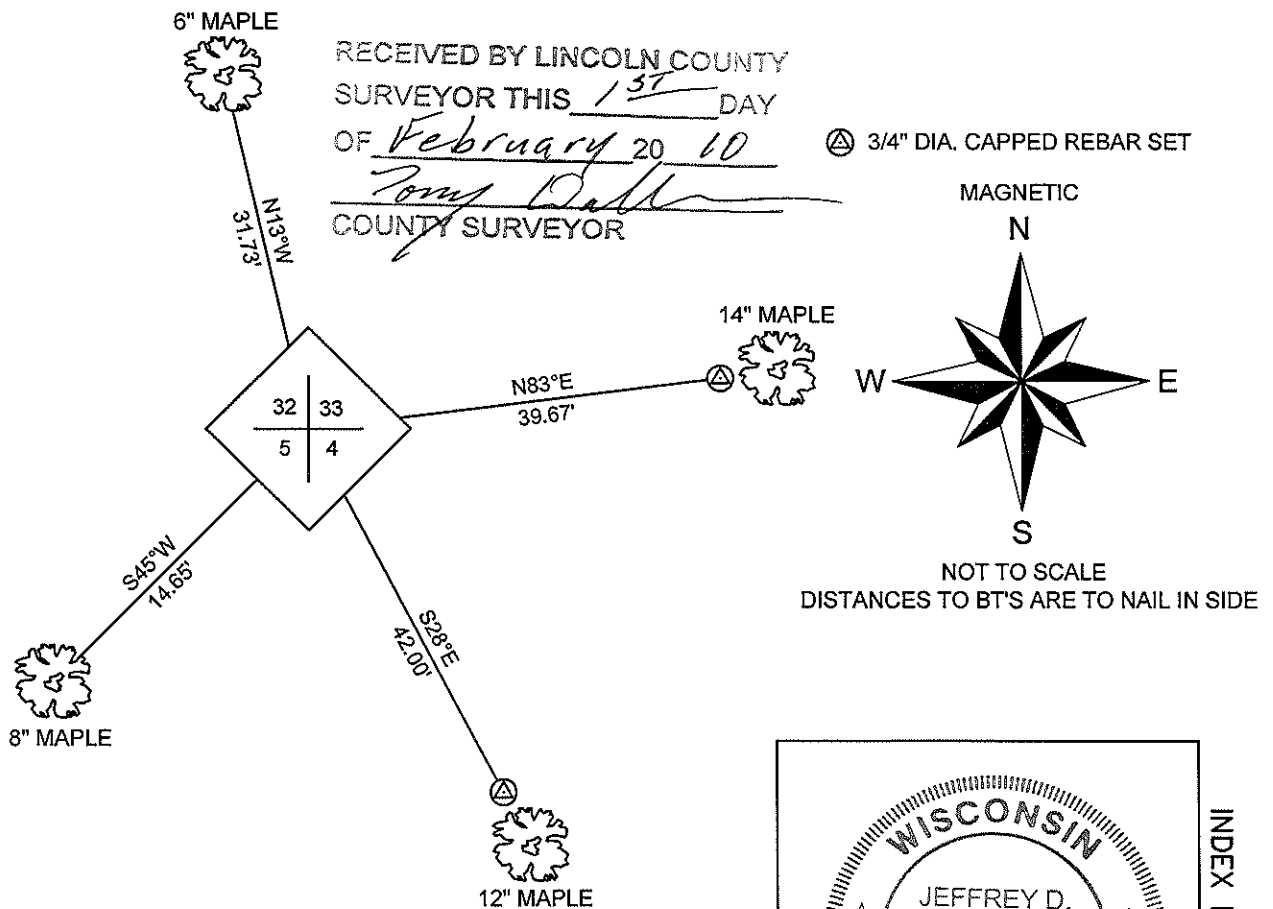
(f)(g)(h) DESCRIPTION OF MONUMENT FOUND AT THIS CORNER AND IF IT WAS ACCEPTED STATE ALL EVIDENCE (MATERIAL, TESTIMONIAL, OCCUPATIONAL, PLATS, RECORDS, OTHER MONUMENTS) USED AS A BASIS FOR ESTABLISHING LOCATION. IF REESTABLISHING THROUGH LOST CORNER PROPORTIONATE METHODS, INDICATE ALL MONUMENTS, DISTANCES, AND DIRECTIONS USED TO ESTABLISH. INDICATE TYPE OF MONUMENT AND SIGN POST FOUND OR SET.

1851: J. M. MARSH SET THE ORIGINAL SECTION CORNER POST.

1930'S: FRANCIS FOX SET A STONE MONUMENT ON THE WEST EDGE OF AN OLD LOGGING ROAD. HE FOUND A VERY OLD STAKE WHILE DIGGING AND NOTES A BT FOUND (NOT ORIGINAL). HE ALSO NOTES TWO BEARING TREES: 12" PINE STUMP - S60°W, 31.0' AND A 7" BIRCH - N28°E, 32.5'.

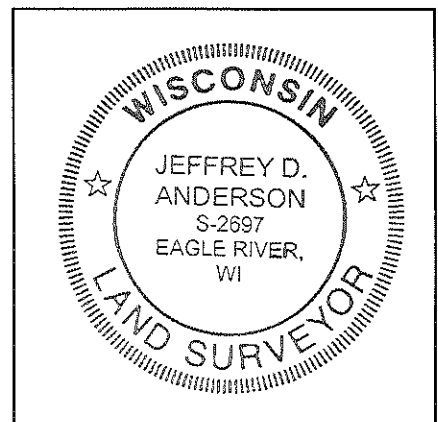
01/05/2010: I FOUND A 6" SQUARE GRANITE MONUMENT WITH A 1-1/4" DIA. IRON PIPE ALONG THE NORTHEAST SIDE. I SET A PLASTIC POST 1' NORTH OF THE MONUMENT, MADE TWO BEARING TREES AND SET TWO 3/4" DIA. CAPPED REBAR REFERENCE MONUMENTS AS SHOWN BELOW.

(c)(d)(e) PLAN VIEW OF CORNER WITH TIES TO AT LEAST FOUR WITNESSES. IF IN DISAGREEMENT WITH PREVIOUSLY ESTABLISHED CORNER, SHOW THE DISTANCES BETWEEN THE TWO CORNERS AND ALSO INDICATE THE TIE TO THE DISPUTED CORNER.



I JEFFREY D. ANDERSON, REGISTERED LAND SURVEYOR NO. 2697, HEREBY CERTIFY THAT THE CORNER LOCATION ON THIS RECORD WAS REFERENCED BY ME OR UNDER MY DIRECTION AND CONTROL AND THAT THIS U.S. PUBLIC LAND SURVEY MONUMENT RECORD IS COMPLETE TO THE BEST OF MY KNOWLEDGE AND BELIEF.

Jeffrey D. Anderson 1/26/10
 SIGNATURE



INDEX NO. Y-9

SOUTHWEST CORNER, SECTION 33 – 6" SQUARE GRANITE STONE FOUND



FACING NORTH



FACING SOUTH



FACING EAST



FACING WEST

