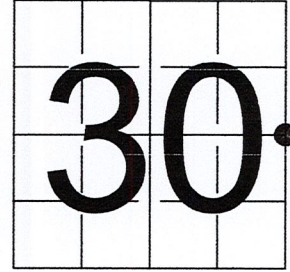


U S PUBLIC LAND SURVEY MONUMENT RECORD

NOTE: This form is intended and designed to fulfill all requirements of Wisconsin Administrative Code, Chapter A-E 7.08 U.S. Public Land Survey Monument Record (3) (a-i)

A-E 7.08(3)(a) Identity of corner:
 EAST 1/4 CORNER SECTION 30,
 TOWNSHIP 33 NORTH,
 RANGE 05 EAST OF THE 4TH PM,
 TOWN OF HARDING,
 COUNTY OF LINCOLN

WISCORS - LINCOLN COUNTY
 N: 172021.371 USft (172,022.064)
 E: 338227.473 USft (338,227.085)
 Datum: NAD83 (2011)
 GNSS Method RTK
 Base from GNSS Control set WISCORS VRS



The coordinate value shown has been verified by the average of two or more GPS observations at a markedly different time. Coordinates shown in parenthesis are provided by Lincoln County.

A-E 7.08(3)(b)

Original Surveyor: Jackson L. Prentice

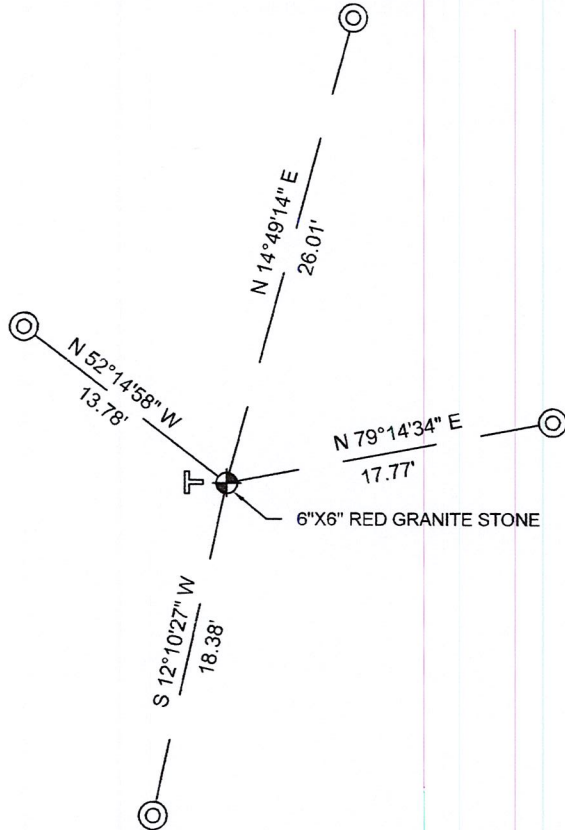
Date of Original Survey Commenced: November 9, 1854
 Completed: November 21, 1854

Original Accessories:
 Maple 10 S 14° E 30 Links
 Pine 10 S 80° W 24 Links

1930's -1940's - Surveyor Francis Fuchs (aka Francis Fox) was known to set granite stone monuments in this area.

December 13, 2022 - While performing the 2022 Lincoln County PLSS Corner Remonumentation and GPS Services project, I found a 6" x 6" red granite monument near the computed position provided by Lincoln County. The stone is leaning southeast. I was not able to reset plumb. Monument extends ±8" above ground. I established 4 new reference monuments as shown below.

A-E 7.08(3)(c)(d) Plan view of corner with references to at least 4 witness monuments.



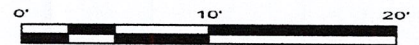
BEARINGS LISTED TO THE NEAREST SECOND ARE REFERENCED TO WISCONSIN COUNTY COORDINATE REFERENCE SYSTEM - LINCOLN COUNTY ZONE. ALL OTHER BEARINGS ARE MAGNETIC



RECEIVED BY LINCOLN COUNTY
 SURVEYOR THIS 27TH DAY
 OF December 20 22
Jeffrey DeMuth
 COUNTY SURVEYOR

LEGEND

- 6" x 6" red granite monument, found
- 7/8" diameter X 18" long - iron rod with 2" diameter aluminum cap, set
- Vinyl T-post, set ±2.4 feet west of corner



A-E 7.08(3)(e) 1854 Surveyor set a post, 1930's - 1940's Surveyor set a granite stone monument. I found a 6" x 6" red granite stone.

A-E 7.08(3)(f) I accept this monument as a FOUND PERPETUATED LOCATION of the corner.

A-E 7.08(3)(g)(h) This corner was not determined through lost-corner-proportionate methods.

A-E 7.08(3)(i) I, Jeffrey L. DeMuth, Professional Land Surveyor No. S-2656, hereby certify that the corner location on this record was determined by the Lincoln County Surveyor, and the monuments found or set as shown hereon were measured by me or under my direction and control, and that this U.S. Public Land Survey Monument Record is correct and complete to the best of my knowledge, and belief.

Jeffrey L. DeMuth

 SIGNATURE

December 14, 2022

 DATE



5-5

REPORT

2022-Lincoln County PLSS Corner Remonumentation and GPS Services

Wisconsin Corner Point Identification Number: 43305302000

Surveyor: Jeffrey L. DeMuth – S2656

Corner monument: Found 6" x 6" red granite stone.

Field Book: Cardinal North – Lincoln Co. Remon. – 2022-00

Page: 80

Horizontal Datum: WisCRS – Lincoln County Zone – NAD83(2011)

Date / time of initial measurement:

December 13, 2022 - Start 10:37:01 CST – End 10:47:09 CST

Reference monuments:

4 – Set - 7/8" diameter X 18" long iron rods with 2" diameter Lincoln Co. aluminum cap.

Coordinate Table

	County Provided	2022 Measurement	Difference
North	172022.064	172021.371	0.69
East	338227.085	338227.473	-0.39

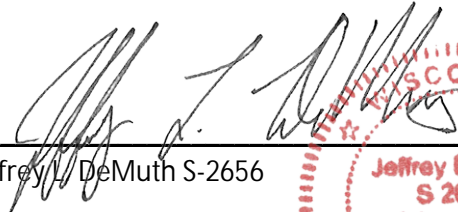
Observed coordinates match with existing coordinates within reason.

Request Data Log for more information.

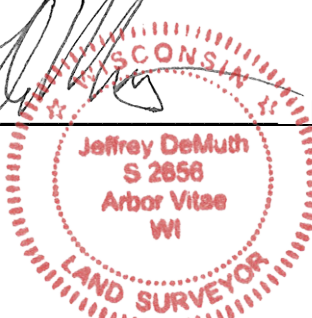
Additional Notes:

Found monument leaning southeast, surveyor was not able to reset. Monument extends $\pm 8"$ above grade.

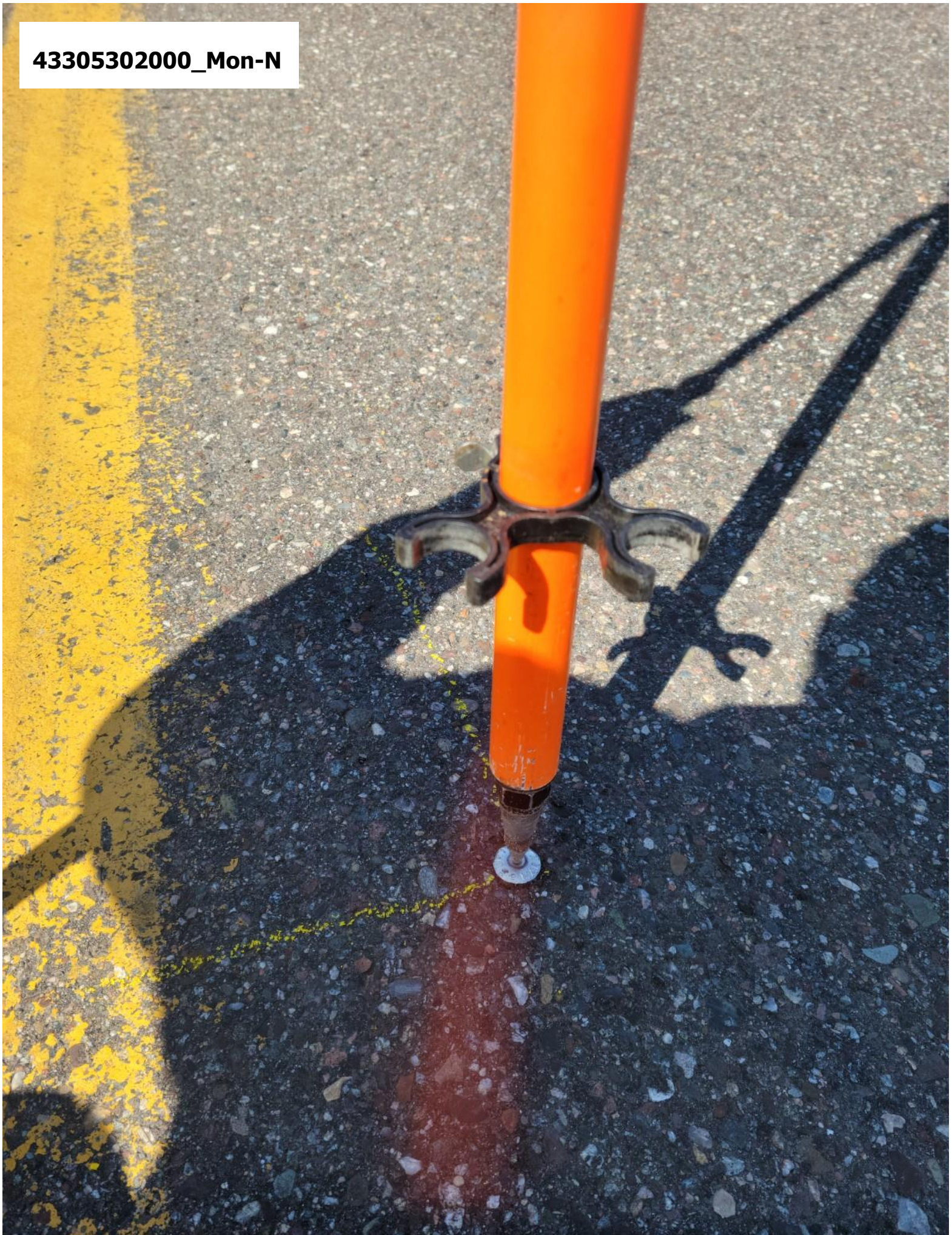
Observed point using base station-Base from GNSS Control set from WISCORS VRS.


Jeffrey L. DeMuth S-2656

December 14, 2022
Date



43305302000_Mon-N



43305302000_North



43305302000_West



43305302000_South



43305302000_East

