

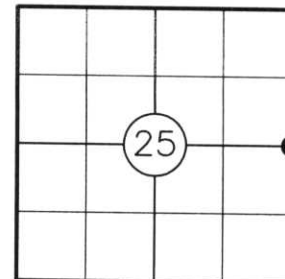
U.S. PUBLIC LAND SURVEY MONUMENT RECORD

NOTE: THIS FORM IS INTENDED AND DESIGNED TO FULFILL ALL REQUIREMENTS OF WISCONSIN ADMINISTRATIVE CODE CHAPTER A-E 7.08 U.S. PUBLIC LAND SURVEY MONUMENT RECORD (3) (a)(b)(c)(d)(e)(f)(g)(h)(i). AN ADDITIONAL SHEET MAY BE ADDED IF NECESSARY TO CONFIRM WITH SAID REQUIREMENTS.

(a) CORNER LOCATION:

E 1/4 CORNER OF SECTION 25
 TOWNSHIP 33 NORTH
 RANGE 5 EAST
 TOWN OF HARDING
 COUNTY OF LINCOLN

RECEIVED BY LINCOLN COUNTY
 SURVEYOR THIS 14TH DAY
 OF December, 20 04
Tony Dahl
 COUNTY SURVEYOR



(b) HISTORY OF ORIGINAL CORNER:

ORIGINAL SURVEYOR: J.M. MARSH
 DATE OF SURVEY: COMMENCED: JULY, 1851
 COMPLETED: AUGUST, 1851

ORIGINAL BEARING TREES: 12" HEMLOCK - S78°E, 30 LKS.
 10" BIRCH - S37°W 90 LKS.
 14" HEMLOCK - N70°W, 147 LKS.
 24" BIRCH - N19°E, 24 LKS.

(f)(g)(h) DESCRIPTION OF MONUMENT FOUND AT THIS CORNER AND IF IT WAS ACCEPTED STATE ALL EVIDENCE (MATERIAL, TESTIMONIAL, OCCUPATIONAL, PLATS, RECORDS, OTHER MONUMENTS) USED AS A BASIS FOR ESTABLISHING LOCATION. IF REESTABLISHING THROUGH LOST CORNER PROPORTIONATE METHODS, INDICATE ALL MONUMENTS, DISTANCES, AND DIRECTIONS USED TO ESTABLISH. INDICATE TYPE OF MONUMENT AND SIGN POST FOUND OR SET.

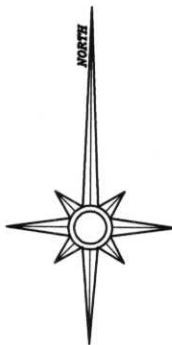
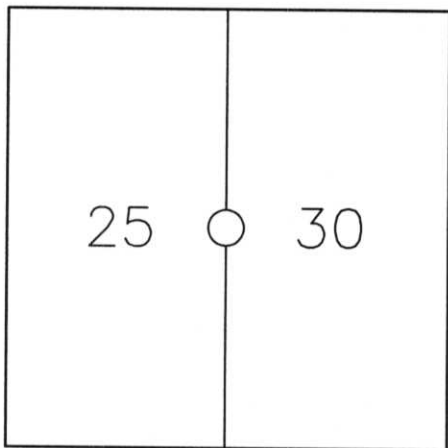
1930'S: FRANCIS X. FOX SET STONE MONUMENT AND MOUNDED WITH STONE IN LOW SWAMPY AREA MIDWAY BETWEEN OPPOSING SECTION CORNERS PER NOTES FILED IN THE LINCOLN COUNTY COURTHOUSE. THE NOTES STATE NORTH TO LEAVE SWAMP 68' AND A 22" PINE STUMP BEARS N63°W, 53.6'.

1941: PLAT OF SURVEY BY FRANCIS X. FOX FOR THE TOWN OF ROCK FALLS.

2004: FOUND AND ACCEPTED 6" X 6" GRANITE STONE MONUMENT IN PLACE 1-1/2' ABOVE GROUND IN A MOUND OF STONE. FOUND 22" PINE STUMP N57°W, ±53.6'. PLUMBED STONE MONUMENT, ESTABLISHED TWO BEARING TREES AND SET 2 LINCOLN COUNTY ALUMINUM CAPPED REBAR REFERENCE MONUMENTS AS SHOWN BELOW. SET CARSONITE POST 1' NORTH OF MONUMENT.

(c)(d)(e) PLAN VIEW OF CORNER WITH TIES TO AT LEAST FOUR WITNESSES. IF IN DISAGREEMENT WITH PREVIOUSLY ESTABLISHED CORNER, SHOW THE DISTANCES BETWEEN THE TWO CORNERS AND ALSO INDICATE THE TIE TO THE DISPUTED CORNER.

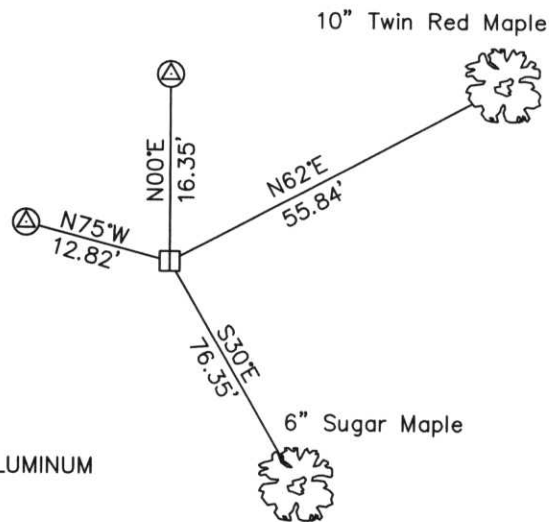
6" X 6" GRANITE STONE MONUMENT



NOT TO SCALE

LEGEND

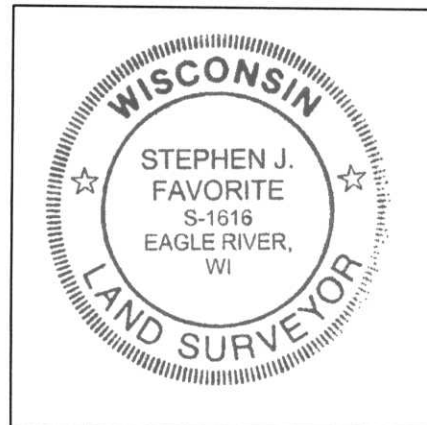
⊙ SET 7/8" X 30" ALUMINUM CAPPED REBAR



NOTE:
 1) ALL DISTANCES TO BT'S ARE MEASURED TO NAIL ON SIDE OF TREE

I STEPHEN J. FAVORITE, REGISTERED LAND SURVEYOR NO. 1616, HEREBY CERTIFY THAT THE CORNER LOCATION ON THIS RECORD WAS REFERENCED BY ME OR UNDER MY DIRECTION AND CONTROL AND THAT THIS U.S. PUBLIC LAND SURVEY MONUMENT RECORD IS COMPLETE TO THE BEST OF MY KNOWLEDGE AND BELIEF.

Stephen J. Favorite 12-10-04
 SIGNATURE DATE



INDEX NO.

5-25