

# U S PUBLIC LAND SURVEY MONUMENT RECORD

NOTE: This form is intended and designed to fulfill all requirements of Wisconsin Administrative Code, Chapter A-E 7.08 U.S. Public Land Survey Monument Record (3) (a-i)

A-E 7.08(3)(a) Identity of corner:  
 EAST 1/4 CORNER SECTION 24,  
 TOWNSHIP 33 NORTH,  
 RANGE 05 EAST OF THE 4TH PM,  
 TOWN OF HARDING,  
 COUNTY OF LINCOLN

WISCORS - LINCOLN COUNTY  
 N: 177,229.624 USft (177,229.459)  
 E: 364,843.666 USft (364,843.550)  
 Datum: NAD83 (2011)  
 GNSS Method RTN - Direct  
 GNSS Control WISCORS VRS



The coordinate value shown has been verified by the average of two or more GPS observations at a markedly different time. Coordinates shown in parenthesis are provided by Lincoln County.

A-E 7.08(3)(b)

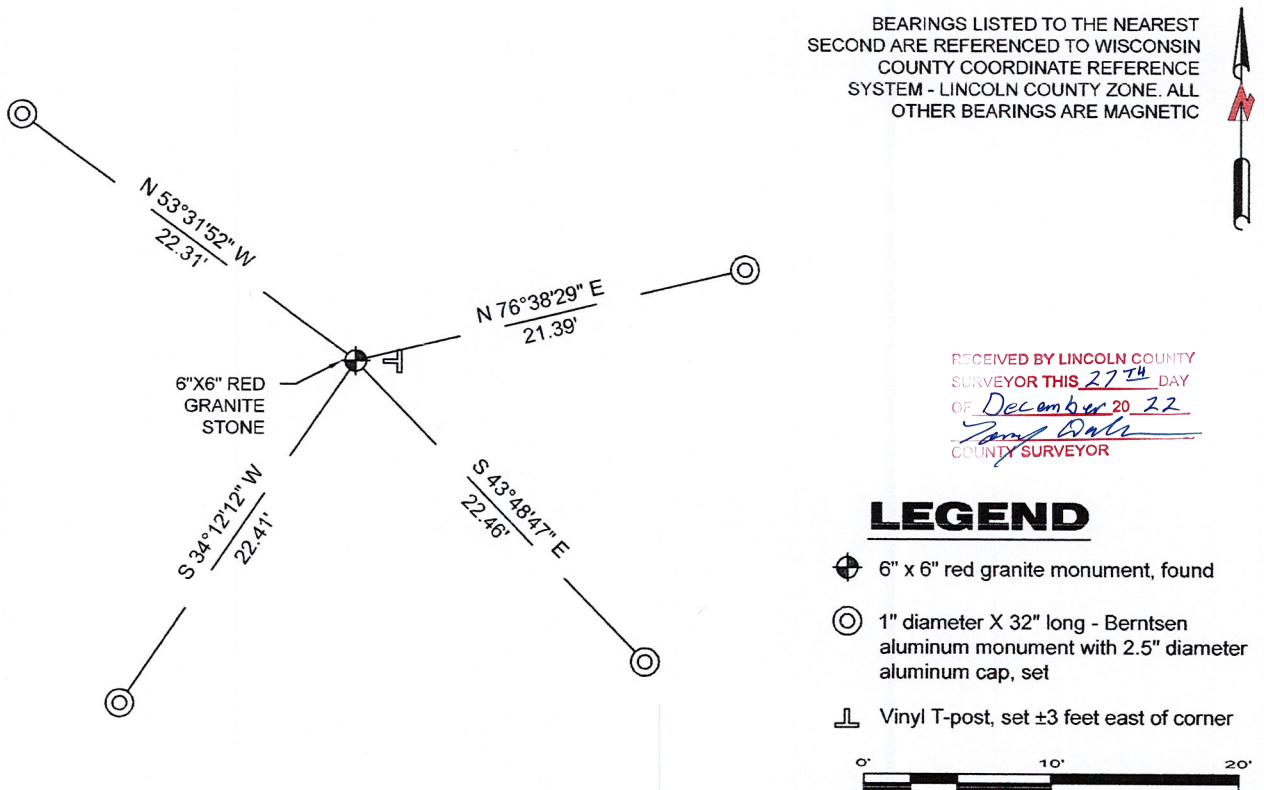
Original Surveyor: James M. Marsh

Date of Original Survey	Commenced:	July 21, 1851	Original Accessories:
	Completed:	August 11, 1851	Tamarack 16 N 1° W 50 Links
			Birch 10 N 38° E 62 Links

1941 - Francis X. Fox (aka Francis X. Fuchs) - Survey of TWP., 32 & 33 N. ~ R.6 E. Town of Rock Falls - indicates "set corners to all forties on all quarter & section lines" on Map M136A.

October 21, 2022 - While performing the 2022 Lincoln County PLSS Corner Remonumentation and GPS Services project, I found a 6" x 6" red granite stone near the computed position provided by Lincoln County. The stone was leaning south, and I reset plumb. Monument extends ±18" above ground. I established 4 new reference monuments as shown below.

A-E 7.08(3)(c)(d) Plan view of corner with references to at least 4 witness monuments.

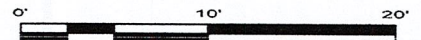


BEARINGS LISTED TO THE NEAREST SECOND ARE REFERENCED TO WISCONSIN COUNTY COORDINATE REFERENCE SYSTEM - LINCOLN COUNTY ZONE. ALL OTHER BEARINGS ARE MAGNETIC

RECEIVED BY LINCOLN COUNTY SURVEYOR THIS 27<sup>TH</sup> DAY OF December 20 22  
*Jeffrey DeMuth*  
 COUNTY SURVEYOR

## LEGEND

- 6" x 6" red granite monument, found
- 1" diameter X 32" long - Berntsen aluminum monument with 2.5" diameter aluminum cap, set
- Vinyl T-post, set ±3 feet east of corner



A-E 7.08(3)(e) 1851 Surveyor set a post, 1941 Surveyor set a granite stone monument. I found a 6" x 6" red granite stone.

A-E 7.08(3)(f) I accept this monument as a FOUND PERPETUATED LOCATION of the corner.

A-E 7.08(3)(g)(h) This corner was not determined through lost-corner-proportionate methods.

A-E 7.08(3)(i) I, Jeffrey L. DeMuth, Professional Land Surveyor No. S-2656, hereby certify that the corner location on this record was determined by the Lincoln County Surveyor, and the monuments found or set as shown hereon were measured by me or under my direction and control, and that this U.S. Public Land Survey Monument Record is correct and complete to the best of my knowledge, and belief.

*Jeffrey L. DeMuth*  
 December 14, 2022  
 SIGNATURE DATE



0-25

## REPORT

### 2022-Lincoln County PLSS Corner Remonumentation and GPS Services

Wisconsin Corner Point Identification Number: 43305242000

Surveyor: Jeffrey L. DeMuth – S2656

Corner monument: Found 6" x 6" red granite stone.

Field Book: Cardinal North – Lincoln Co. Remon. – 2022-00

Page: 57

Horizontal Datum: WisCRS – Lincoln County Zone – NAD83(2011)

Date / time of initial measurement:

October 21, 2022 - Start 14:35:09 CDT – End 14:16:34 CDT

Reference monuments:

4 – Set - 1" diameter X 32" long aluminum pipe with 2.5" diameter Lincoln Co. aluminum cap.

#### Coordinate Table

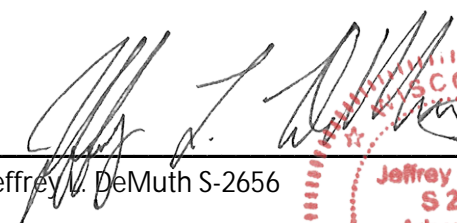
	County Provided	2022 Measurement	Difference
North	177229.459	177229.624	-0.16
East	364843.550	364843.666	-0.12

Observed coordinates match with existing coordinates within reason.

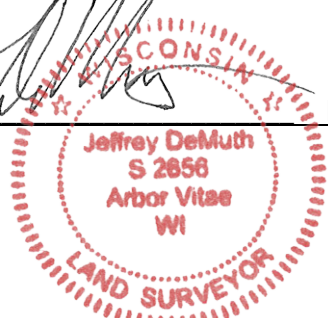
Request Data Log for more information.

Additional Notes:

Found monument leaning south, reset plumb. Corner falls in an alder swamp and extends ±18" above grade.

  
Jeffrey L. DeMuth S-2656

November 15, 2022  
Date



43305242000\_Mon-N



43305242000\_North



43305242000\_West



43305242000\_South



43305242000\_East

