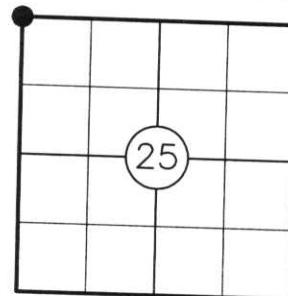


# U.S. PUBLIC LAND SURVEY MONUMENT RECORD

NOTE: THIS FORM IS INTENDED AND DESIGNED TO FULFILL ALL REQUIREMENTS OF WISCONSIN ADMINISTRATIVE CODE CHAPTER A-E 7.08 U.S. PUBLIC LAND SURVEY MONUMENT RECORD (3) (a)(b)(c)(d)(e)(f)(g)(h)(i). AN ADDITIONAL SHEET MAY BE ADDED IF NECESSARY TO CONFIRM WITH SAID REQUIREMENTS.

**(a) CORNER LOCATION:**

NW CORNER OF SECTION 25  
 TOWNSHIP 33 NORTH  
 RANGE 5 EAST  
 TOWN OF HARDING  
 COUNTY OF LINCOLN



**(b) HISTORY OF ORIGINAL CORNER:**

ORIGINAL SURVEYOR: JACKSON L. PRENTICE  
 DATE OF SURVEY: COMMENCED: NOVEMBER, 1854  
 COMPLETED: NOVEMBER, 1854

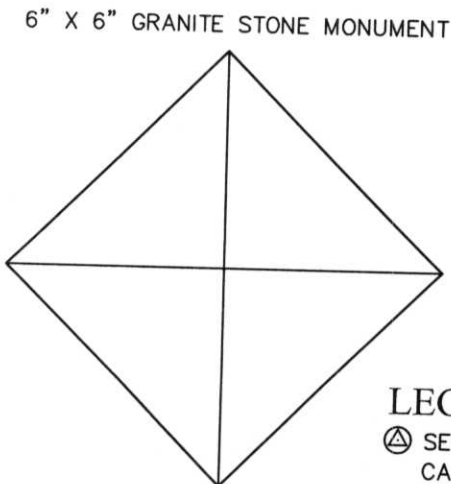
ORIGINAL BEARING TREES: 10" MAPLE - S61°W, 24 LKS.  
 10" TAMARACK - S47°E, 25 LKS.  
 10" TAMARACK - N76°E, 27 LKS.  
 10" BIRCH - N64°W, 15 LKS.

**(f)(g)(h) DESCRIPTION OF MONUMENT FOUND AT THIS CORNER AND IF IT WAS ACCEPTED STATE ALL EVIDENCE (MATERIAL, TESTIMONIAL, OCCUPATIONAL, PLATS, RECORDS, OTHER MONUMENTS) USED AS A BASIS FOR ESTABLISHING LOCATION. IF REESTABLISHING THROUGH LOST CORNER PROPORTIONATE METHODS, INDICATE ALL MONUMENTS, DISTANCES, AND DIRECTIONS USED TO ESTABLISH. INDICATE TYPE OF MONUMENT AND SIGN POST FOUND OR SET.**

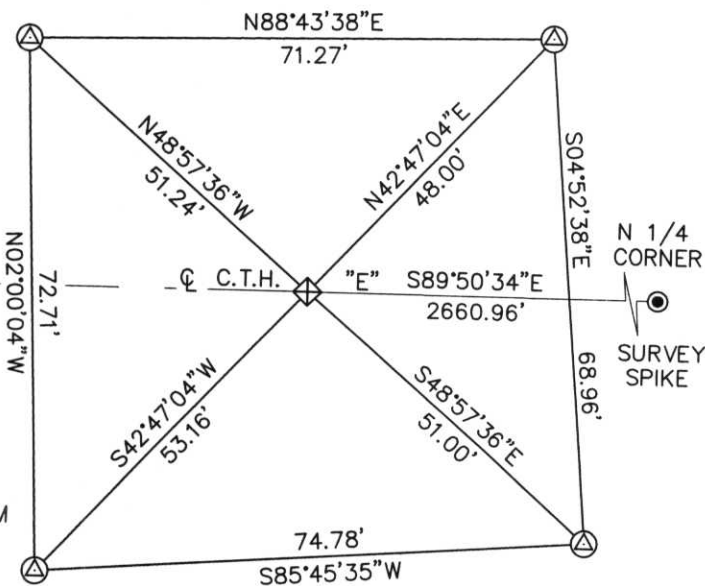
1930'S: FRANCIS X. FOX SET STONE MONUMENT AT THE CENTERLINE OF C.T.H. "E", 12" BELOW TOP OF ROAD. SET LOCATION POST 20.0' NORTH PER NOTES FILED IN THE LINCOLN COUNTY COURTHOUSE.

2004: FOUND AND ACCEPTED 6" X 6" X 18" GRANITE STONE MONUMENT IN PLACE 3' BELOW THE SURFACE, LEANING SOUTHERLY AND IN THE CENTERLINE OF C.T.H. "E". I SET 4 LINCOLN COUNTY ALUMINUM CAPPED REBAR REFERENCE MONUMENTS AS SHOWN BELOW. SET CARSONITE POST 1' NORTH OF SOUTHEASTERLY MONUMENT.

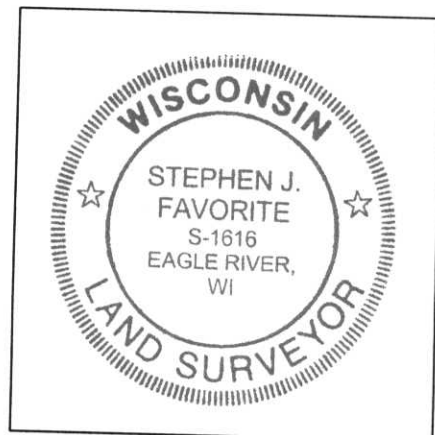
**(c)(d)(e) PLAN VIEW OF CORNER WITH TIES TO AT LEAST FOUR WITNESSES. IF IN DISAGREEMENT WITH PREVIOUSLY ESTABLISHED CORNER, SHOW THE DISTANCES BETWEEN THE TWO CORNERS AND ALSO INDICATE THE TIE TO THE DISPUTED CORNER.**



NOT TO SCALE  
**LEGEND**  
 (triangle symbol) SET 7/8" X 30" ALUMINUM CAPPED REBAR



RECEIVED BY LINCOLN COUNTY SURVEYOR THIS 14<sup>TH</sup> DAY OF December, 20 04  
*Tony Dahl*  
 COUNTY SURVEYOR



INDEX NO. Q-21

I STEPHEN J. FAVORITE, REGISTERED LAND SURVEYOR NO. 1616, HEREBY CERTIFY THAT THE CORNER LOCATION ON THIS RECORD WAS REFERENCED BY ME OR UNDER MY DIRECTION AND CONTROL AND THAT THIS U.S. PUBLIC LAND SURVEY MONUMENT RECORD IS COMPLETE TO THE BEST OF MY KNOWLEDGE AND BELIEF.

*Stephen J. Favorite*  
 SIGNATURE 12-10-04  
DATE