

U S PUBLIC LAND SURVEY MONUMENT RECORD

NOTE: This form is intended and designed to fulfill all requirements of Wisconsin Administrative Code, Chapter A-E 7.08 U.S. Public Land Survey Monument Record (3) (a-i)

A-E 7.08(3)(a) Identity of corner:
 EAST 1/4 CORNER SECTION 21,
 TOWNSHIP 33 NORTH,
 RANGE 05 EAST OF THE 4TH PM,
 TOWN OF HARDING,
 COUNTY OF LINCOLN

WISCRS - LINCOLN COUNTY
 N: 177,221.541 USft (177,221.500)
 E: 348,965.729 USft (348,965.676)
 Datum: NAD83 (2011)
 GNSS Method RTK
 Base from GNSS Control set WISCORS VRS



The coordinate value shown has been verified by the average of two or more GPS observations at a markedly different time. Coordinates shown in parenthesis are provided by Lincoln County.

A-E 7.08(3)(b)

Original Surveyor: Jackson L. Prentice

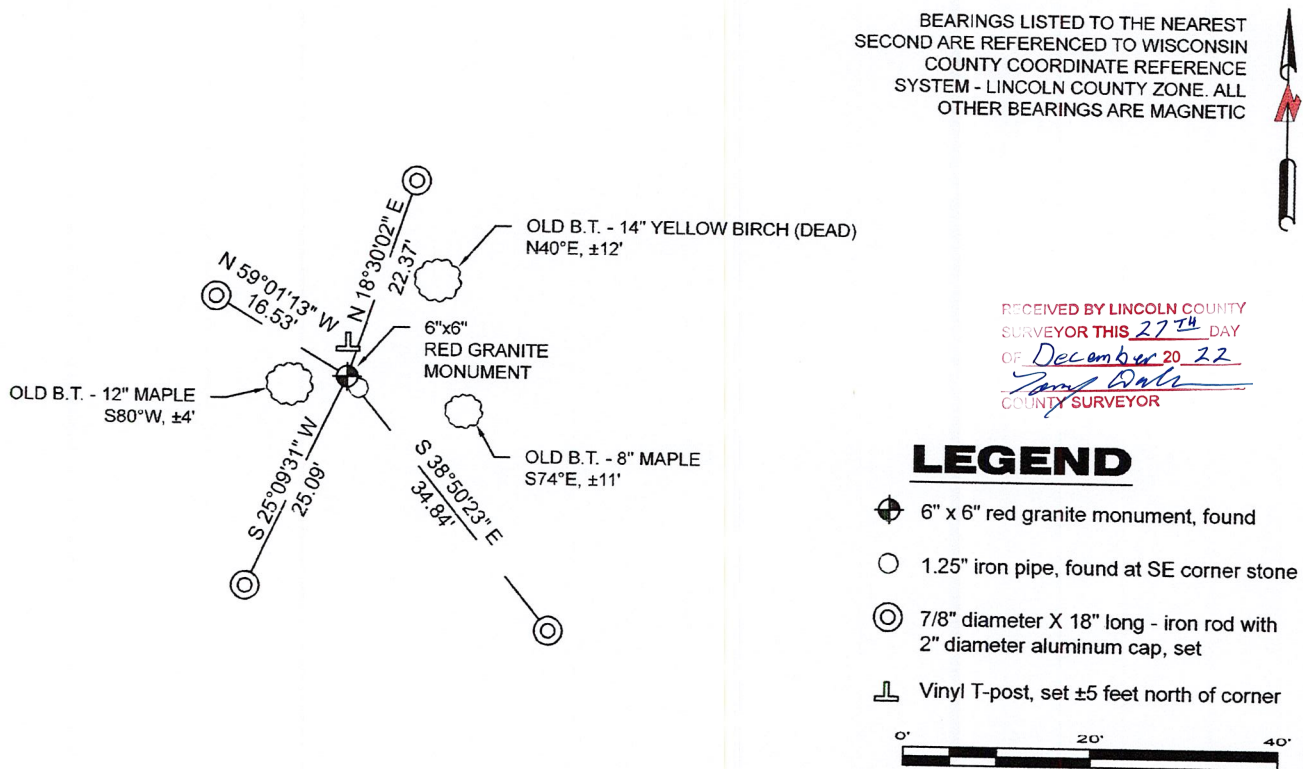
Date of Original Survey Commenced: November 9, 1854
 Completed: November 21, 1854

Original Accessories:
 Maple 11 N 63° W 8 Links
 Maple 8 S 76° E 27 Links

930's -1940's - Surveyor Francis Fuchs (aka Francis Fox) was known to set granite stone monuments in this area.

November 16, 2022 - While performing the 2022 Lincoln County PLSS Corner Remonumentation and GPS Services project, I found a 6"x 6" red granite stone near the computed position provided by Lincoln County. I also found a 1.25" diameter iron pipe. The monument extends ±16" above grade. I established 4 new reference monuments as shown below.

A-E 7.08(3)(c)(d) Plan view of corner with references to at least 4 witness monuments.



RECEIVED BY LINCOLN COUNTY
 SURVEYOR THIS 27TH DAY
 OF December 20 22
Jeffrey DeMuth
 COUNTY SURVEYOR

LEGEND

- 6" x 6" red granite monument, found
- 1.25" iron pipe, found at SE corner stone
- 7/8" diameter X 18" long - iron rod with 2" diameter aluminum cap, set
- Vinyl T-post, set ±5 feet north of corner

A-E 7.08(3)(e) 1854 Surveyor set a post, 1930's - 1940's Surveyor set a granite stone monument. I found a 6" x 6" red granite stone.

A-E 7.08(3)(f) I accept this monument as a FOUND PERPETUATED LOCATION of the corner.

A-E 7.08(3)(g)(h) This corner was not determined through lost-corner-proportionate methods.

A-E 7.08(3)(i) I, Jeffrey L. DeMuth, Professional Land Surveyor No. S-2656, hereby certify that the corner location on this record was determined by the Lincoln County Surveyor, and the monuments found or set as shown hereon were measured by me or under my direction and control, and that this U.S. Public Land Survey Monument Record is correct and complete to the best of my knowledge, and belief.

SIGNATURE

December 14, 2022

DATE



0-13

REPORT

2022-Lincoln County PLSS Corner Remonumentation and GPS Services

Wisconsin Corner Point Identification Number: 43305212000

Surveyor: Jeffrey L. DeMuth – S2656

Corner monument: Found 6" x 6" red granite stone.

Field Book: Cardinal North – Lincoln Co. Remon. – 2022-00

Page: 67

Horizontal Datum: WisCRS – Lincoln County Zone – NAD83(2011)

Date / time of initial measurement:

November 16, 2022 - Start 11:57:04 CST – End 12:23:23 CST

Reference monuments:

4 – Set - 7/8" diameter X 18" long iron rods with 2" diameter Lincoln Co. aluminum cap.

3 - Found – Bearing Tree by others.

1 – Found - 1.25" diameter iron pipe.

Coordinate Table

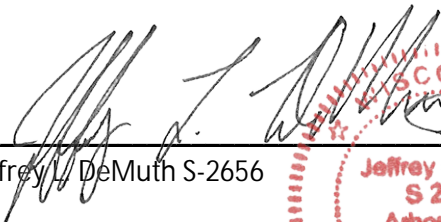
	County Provided	2022 Measurement	Difference
North	177221.500	177221.541	-0.04
East	348965.676	348965.729	-0.05

Observed coordinates match with existing coordinates within reason.


Request Data Log for more information.

Additional Notes:

Monument extends ±16" above grade.


Jeffrey L. DeMuth S-2656

December 01, 2022
Date



43305212000_Mon-N



43305212000_North



43305212000_West



43305212000_South



43305212000_East

