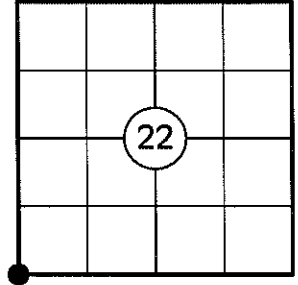


U.S. PUBLIC LAND SURVEY MONUMENT RECORD

NOTE: THIS FORM IS INTENDED AND DESIGNED TO FULFILL ALL REQUIREMENTS OF WISCONSIN ADMINISTRATIVE CODE CHAPTER A-E 7.08 U.S. PUBLIC LAND SURVEY MONUMENT RECORD (3) (a)(b)(c)(d)(e)(f)(g)(h)(i). AN ADDITIONAL SHEET MAY BE ADDED IF NECESSARY TO CONFIRM WITH SAID REQUIREMENTS.

(a) CORNER LOCATION:

SW CORNER OF SECTION 22
 TOWNSHIP 33 NORTH
 RANGE 5 EAST
 TOWN OF HARDING
 COUNTY OF LINCOLN



(b) HISTORY OF ORIGINAL CORNER:

ORIGINAL SURVEYOR: JACKSON L. PRENTICE
 DATE OF SURVEY: NOVEMBER, 1854

ORIGINAL BEARING TREES: LYNN - N12°W, 5LKS
 10" LYNN - N25°E, 6 LKS
 24" ELM - S56°E, 30 LKS
 12" BIRCH - S19°W, 52 LKS

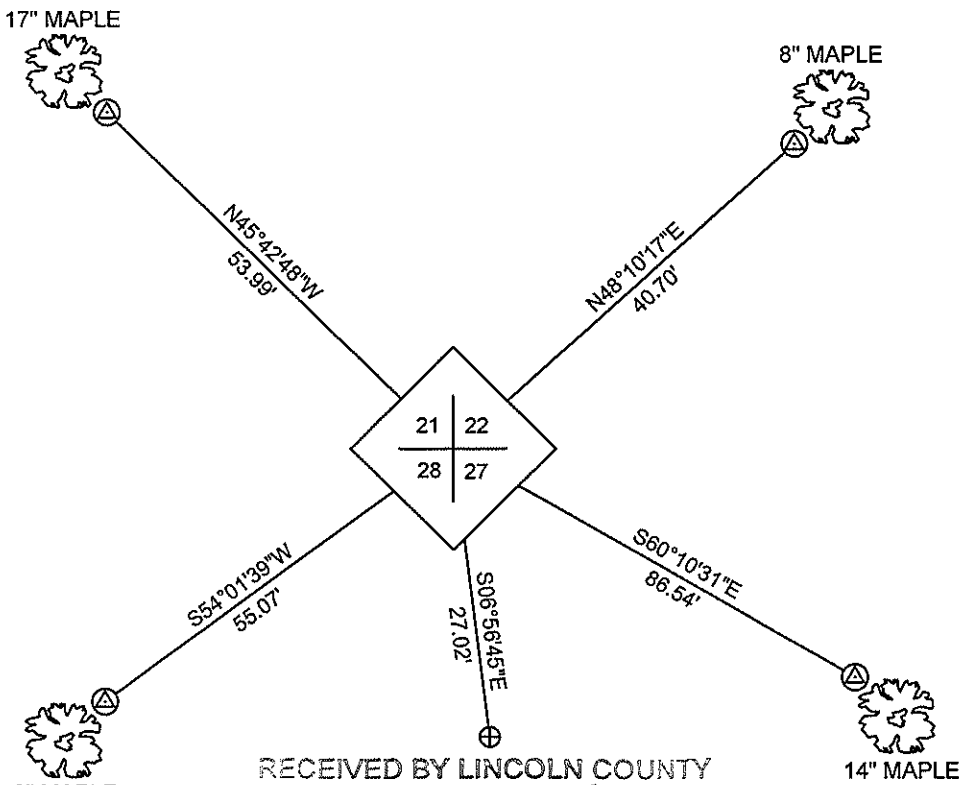
(f)(g)(h) DESCRIPTION OF MONUMENT FOUND AT THIS CORNER AND IF IT WAS ACCEPTED STATE ALL EVIDENCE (MATERIAL, TESTIMONIAL, OCCUPATIONAL, PLATS, RECORDS, OTHER MONUMENTS) USED AS A BASIS FOR ESTABLISHING LOCATION. IF REESTABLISHING THROUGH LOST CORNER PROPORTIONATE METHODS, INDICATE ALL MONUMENTS, DISTANCES, AND DIRECTIONS USED TO ESTABLISH. INDICATE TYPE OF MONUMENT AND SIGN POST FOUND OR SET.

11/1854: JACKSON L. PRENTICE SET THE ORIGINAL SECTION CORNER POST.

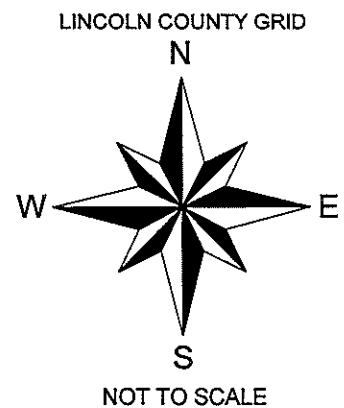
1930'S: FRANCIS FOX SET A STONE MONUMENT 8" BELOW TOP OF ROAD AT THE CORNER. THE CORNER LOCATION FALLS IN ROAD AS WITNESSED BY A BLAZE LINE AND THE ROAD. HE NOTES AN 8" ELM - N04°E, 30.8' AND A 6" MAPLE - S32°E, 38.2'.

11/16/2009: I FOUND A 6" SQUARE GRANITE STONE MONUMENT LEANING NORTHWEST 12" BELOW THE SURFACE OF C.T.H. "E" AND 2' NORTH OF CENTERLINE. I PLUMBED THE MONUMENT AND SET A 3/4" DIA. REBAR ALONG THE SOUTHEAST SIDE OF THE MONUMENT. I SET FOUR 3/4" DIA. ALUMINUM CAPPED REBAR REFERENCE MONUMENTS AS SHOWN BELOW.

(c)(d)(e) PLAN VIEW OF CORNER WITH TIES TO AT LEAST FOUR WITNESSES. IF IN DISAGREEMENT WITH PREVIOUSLY ESTABLISHED CORNER, SHOW THE DISTANCES BETWEEN THE TWO CORNERS AND ALSO INDICATE THE TIE TO THE DISPUTED CORNER.



⊕ 3/4" DIA. CAPPED REBAR SET
 ⊕ 1 1/2" IRON PIPE FOUND



RECEIVED BY LINCOLN COUNTY
 SURVEYOR THIS 15TH DAY
 OF February 20 10
Zony Dahl
 COUNTY SURVEYOR

I GREGORY S. MAINES, REGISTERED LAND SURVEYOR NO. 2729, HEREBY CERTIFY THAT THE CORNER LOCATION ON THIS RECORD WAS REFERENCED BY ME OR UNDER MY DIRECTION AND CONTROL AND THAT THIS U.S. PUBLIC LAND SURVEY MONUMENT RECORD IS COMPLETE TO THE BEST OF MY KNOWLEDGE AND BELIEF.

Gregory S. Maines 1/27/10
 SIGNATURE



INDEX NO. Q-13