

U S PUBLIC LAND SURVEY MONUMENT RECORD

NOTE: This form is intended and designed to fulfill all requirements of Wisconsin Administrative Code, Chapter A-E 7.08 U.S. Public Land Survey Monument Record (3) (a-i)

A-E 7.08(3)(a) Identity of corner:
SOUTH 1/4 CORNER SECTION 20,
TOWNSHIP 33 NORTH,
RANGE 05 EAST OF THE 4TH PM,
TOWN OF HARDING,
COUNTY OF LINCOLN

WISCORS - LINCOLN COUNTY
N: 174,712.147 USft (174,712.391)
E: 340,954.169 USft (340,953.887)
Datum: NAD83 (2011)
GNSS Method RTN - Direct
GNSS Control WISCORS VRS



The coordinate value shown has been verified by the average of two or more GPS observations at a markedly different time. Coordinates shown in parenthesis are provided by Lincoln County.

A-E 7.08(3)(b)

Original Surveyor: Jackson L. Prentice

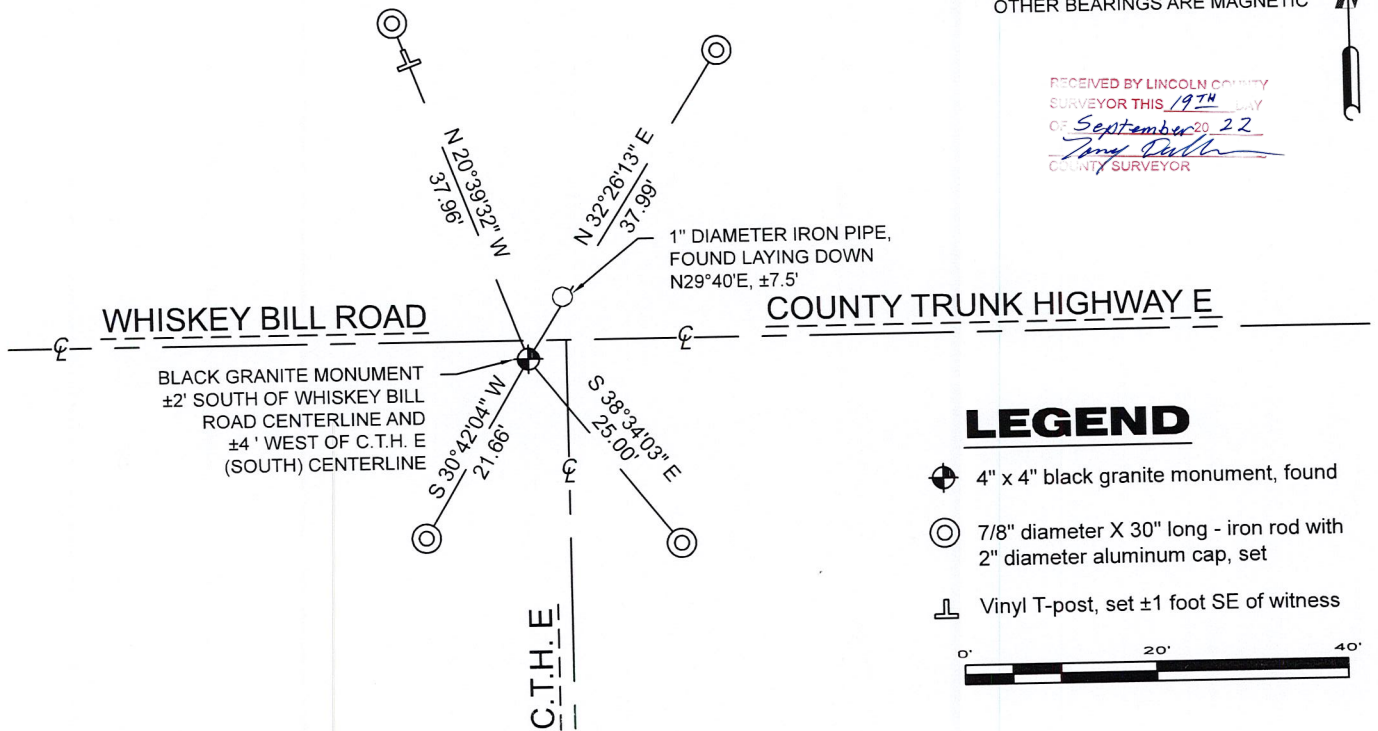
Date of Original Survey	Commenced:	November 9, 1854	Original Accessories:		
	Completed:	November 21, 1854	Pine	16	S 21° W 16 Links
			Pine	17	N 18° E 26 Links

March 16, 1972 - Genisot and Associates, Inc. - indicate a symbol at this position with the notation "S 1/4 SEC. 20" on Map L465A.

May 17, 2022 - While performing the 2022 Lincoln County PLSS Corner Remonumentation and GPS Services project, I found a 4" x 4" black granite monument near the computed position provided by Lincoln County. The monument is 2 feet south of Whiskey Bill Road centerline, 4 feet west of C.T.H. E centerline (south), and 9" below road grade. I established 4 new reference monuments as shown below.

A-E 7.08(3)(c)(d) Plan view of corner with references to at least 4 witness monuments.

BEARINGS LISTED TO THE NEAREST SECOND ARE REFERENCED TO WISCONSIN COUNTY COORDINATE REFERENCE SYSTEM - LINCOLN COUNTY ZONE. ALL OTHER BEARINGS ARE MAGNETIC



RECEIVED BY LINCOLN COUNTY SURVEYOR THIS 19TH DAY OF September 20 22
Jeffrey DeMuth
COUNTY SURVEYOR

A-E 7.08(3)(e) 1854 Surveyor set a post, 1972 Surveyor did not describe the monument. I found a granite stone.

A-E 7.08(3)(f) I accept this monument as a FOUND PERPETUATED LOCATION of the corner.

A-E 7.08(3)(g)(h) This corner was not determined through lost-corner-proportionate methods.

A-E 7.08(3)(i) I, Jeffrey L. DeMuth, Professional Land Surveyor No. S-2656, hereby certify that the corner location on this record was determined by the Lincoln County Surveyor, and the monuments found or set as shown hereon were measured by me or under my direction and control, and that this U.S. Public Land Survey Monument Record is correct and complete to the best of my knowledge, and belief.



SIGNATURE

September 16, 2022

DATE

REPORT

2022-Lincoln County PLSS Corner Remonumentation and GPS Services

Wisconsin Corner Point Identification Number: 43305200020

Surveyor: Jeffrey L. DeMuth – S2656

Corner monument: Found 4"x4" black granite stone.

Field Book: Cardinal North – Lincoln Co. Remon. – 2022-00

Page: 9

Horizontal Datum: WisCRS – Lincoln County Zone – NAD83(2011)

Date / time of initial measurement:

May 17, 2022 - Start 13:38:56 CDT – End 13:44:28 CDT

Reference monuments:

4 – Set - 7/8" diameter X 30" long iron rods with 2" diameter Lincoln Co. aluminum cap.

Coordinate Table

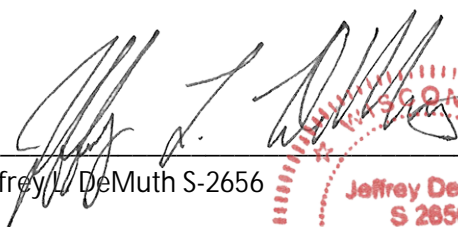
	County Provided	2022 Measurement	Difference
North	174712.391	174712.147	0.24
East	340953.887	340954.169	-0.28

Observed coordinates match existing calculated coordinates within reason.

Request Data Log for more information.

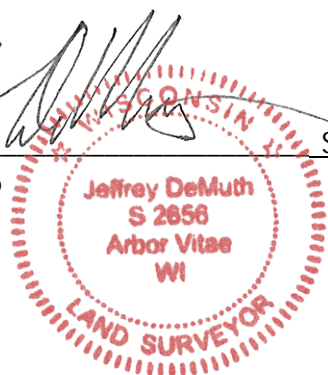
Additional Notes:

Corner falls $\pm 2'$ south of Whiskey Bill Road centerline, $\pm 4'$ west of CTH E (south) centerline, and $\pm 9"$ below the road grade.


 Jeffrey L. DeMuth S-2656

September 16, 2022

Date



43305200020_Mon-N1



43305200020_Mon-N2



43305200020_North



43305200020_West



43305200020_South



43305200020_East

