

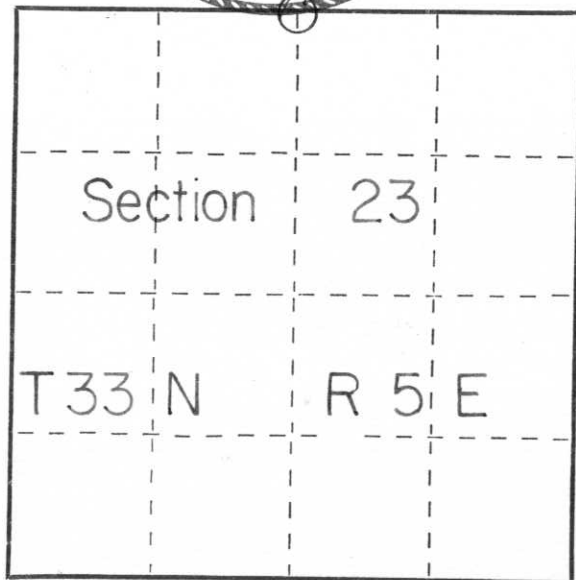
CERTIFIED LAND CORNER RESTORATION

Index No. M-19

State of Wisconsin }
County of LINCOLN } ss.

I WILLIAM IMMICH, do hereby certify that on the 5th day of DECEMBER, 1984, I found evidence of the NORTH 1/4 corner of SECTION 23 Township 33, North, Range S EAST, Fourth, Principal Meridian, as described hereon; and that from this evidence I established a new monument and accessories as described hereon to perpetuate the original location of this corner.

Resident witnesses:



○ = Corner monument restored.

History of original corner establishment:

1854 JACKSON PRENTICE, GOVERNMENT SURVEYOR, SET 1/4 POST 39.96 1/2 CHAINS MADE BEARING TREES MAPLE 8 S 40 E 20 1/2; MAPLE 8 N 24 E 25 1/2
1937- F. FOX EAST BETWEEN 14-23 2658.8 1/4 CORNER POST SOUTH 0.3' SET STONE AT NORTHEAST CORNER OF SMALL CIRCULAR SWAMP 65' ACROSS.
ASH 8" S 65 W 62.5' MOUNDED WITH STONE

Description of corner evidence found:

FOUND SQUARE GRANITE MONUMENT SET BY FOX. DISTANCE WEST TO SECTION CORNER 2639.74, (2658.8)

Description of monument and accessories I established to perpetuate the original location of this corner.

MONUMENT IN GOOD CONDITION, MADE NEW BEARING TREES*
OAK 12" S 69° E 15.84'
S. MAPLE 9" SOUTH 36.12'
ASH 10" S 77° W 25.18'
S MAPLE" NORTH 11.10'

* BEARINGS MAG. - DISTANCE TO FACE OF BLAZE

Dated at RHINELANDER, Wis., this 5th day of DECEMBER, 1984.

Signature William Immich Title REGISTERED LAND SURVEYOR Registration No. 1383
(County Surveyor, Registered Land Surveyor, or other duly authorized official)

Office of Register of Deeds, County of _____, I hereby certify that the within instrument was filed in this office for record on the _____ day of _____, 19____ at _____ o'clock _____ M.

(Register of Deeds)

By _____ Deputy

14
23







