

U S PUBLIC LAND SURVEY MONUMENT RECORD

NOTE: This form is intended and designed to fulfill all requirements of Wisconsin Administrative Code, Chapter A-E 7.08 U.S. Public Land Survey Monument Record (3) (a-i)

A-E 7.08(3)(a) Identity of corner:
 SOUTHEAST CORNER SECTION 12,
 TOWNSHIP 33 NORTH,
 RANGE 05 EAST OF THE 4TH PM,
 TOWN OF HARDING,
 COUNTY OF LINCOLN

WISCORS - LINCOLN COUNTY
 N: 185,129.632 USft (185,129.679)
 E: 364,948.774 USft (364,948.739)
 Datum: NAD83 (2011)
 GNSS Method RTN - Direct
 GNSS Control WISCORS VRS



The coordinate value shown has been verified by the average of two or more GPS observations at a markedly different time. Coordinates shown in parenthesis are provided by Lincoln County.

A-E 7.08(3)(b)

Original Surveyor: James M. Marsh

Date of Original Survey Commenced: July 21, 1851
 Completed: August 11, 1851

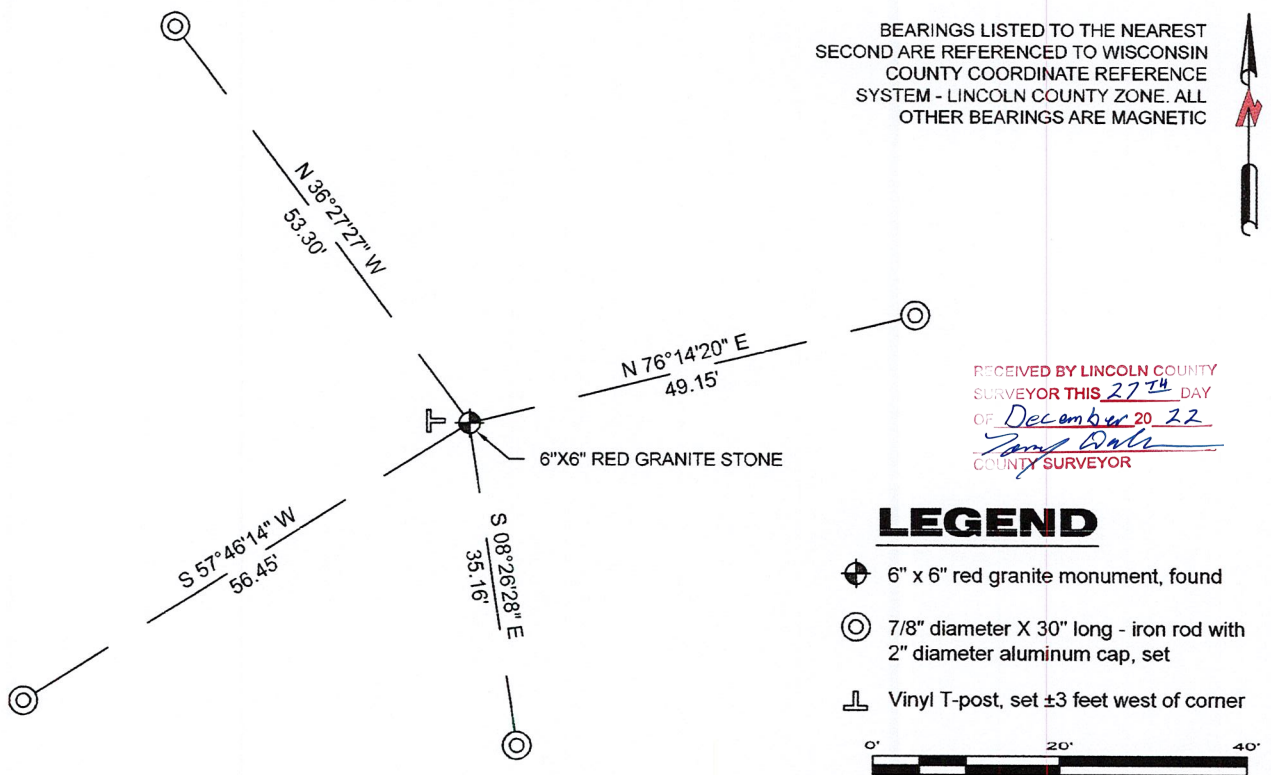
Original Accessories:
 Sugar 12 S 63° E 38 Links
 Sugar 8 S 18° W 27 Links
 Birch 12 N 38° W 9 Links
 Birch 10 N 69° E 54 Links

1941 - Francis X. Fox (aka Francis X. Fuchs) - Survey of TWP., 32 & 33 N. ~ R.6 E. Town of Rock Falls - indicates "set corners to all forties on all quarter & section lines" on Map M136A.

February 19, 1980 - Surveyor 1383 - William G. Immich - indicates this position as "granite monument" on Lincoln County map M106B.

October 20, 2022 - While performing the 2022 Lincoln County PLSS Corner Remonumentation and GPS Services project, I found a 6" x 6" red granite stone near the computed position provided by Lincoln County. The monument extends ±12" above ground. I established 4 new reference monuments as shown below.

A-E 7.08(3)(c)(d) Plan view of corner with references to at least 4 witness monuments.



A-E 7.08(3)(e) 1851 Surveyor set a post, 1941 Surveyor set a granite stone monument, 1980 Surveyor found a stone. I found a 6" x 6" red granite stone.

A-E 7.08(3)(f) I accept this monument as a FOUND PERPETUATED LOCATION of the corner.
 A-E 7.08(3)(g)(h) This corner was not determined through lost-corner-proportionate methods.

A-E 7.08(3)(i) I, Jeffrey L. DeMuth, Professional Land Surveyor No. S-2656, hereby certify that the corner location on this record was determined by the Lincoln County Surveyor, and the monuments found or set as shown hereon were measured by me or under my direction and control, and that this U.S. Public Land Survey Monument Record is correct and complete to the best of my knowledge, and belief.

SIGNATURE _____ DATE December 14, 2022



I-25

REPORT

2022-Lincoln County PLSS Corner Remonumentation and GPS Services

Wisconsin Corner Point Identification Number: 43305120000

Surveyor: Jeffrey L. DeMuth – S2656

Corner monument: Found 6" x 6" red granite stone.

Field Book: Cardinal North – Lincoln Co. Remon. – 2022-00

Page: 55

Horizontal Datum: WisCRS – Lincoln County Zone – NAD83(2011)

Date / time of initial measurement:

October 20, 2022 - Start 12:33:29 CDT – End 13:05:45 CDT

Reference monuments:

4 – Set - 7/8" diameter X 30" long iron rods with 2" diameter Lincoln Co. aluminum cap.

Coordinate Table

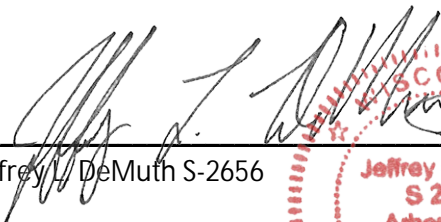
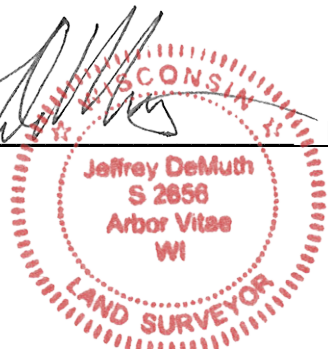
	County Provided	2022 Measurement	Difference
North	185129.679	185129.632	0.05
East	364948.739	364948.774	-0.03

Observed coordinates match with existing coordinates within reason.

Request Data Log for more information.

Additional Notes:

Monument extends ±12" above grade. Quote from field book: "Arguably the most perfect monument".


 Jeffrey L. DeMuth S-2656
 
 November 15, 2022
 Date

43305120000_Mon-N



4330512000_North



43305120000_West



4330512000_South



43305120000_East

