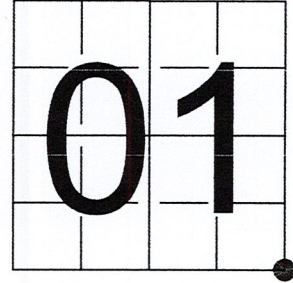


U S PUBLIC LAND SURVEY MONUMENT RECORD

NOTE: This form is intended and designed to fulfill all requirements of Wisconsin Administrative Code, Chapter A-E 7.08 U.S. Public Land Survey Monument Record (3) (a-i)

A-E 7.08(3)(a) Identity of corner:
 SOUTHEAST CORNER SECTION 01,
 TOWNSHIP 33 NORTH,
 RANGE 05 EAST OF THE 4TH PM,
 TOWN OF HARDING,
 COUNTY OF LINCOLN

WISCORS - LINCOLN COUNTY
 N: 190,417.259 USft (190,417.400)
 E: 364,945.331 USft (364,945.210)
 Datum: NAD83 (2011)
 GNSS Method RTN - Direct
 GNSS Control WISCORS VRS



The coordinate value shown has been verified by the average of two or more GPS observations at a markedly different time. Coordinates shown in parenthesis are provided by Lincoln County.

A-E 7.08(3)(b)

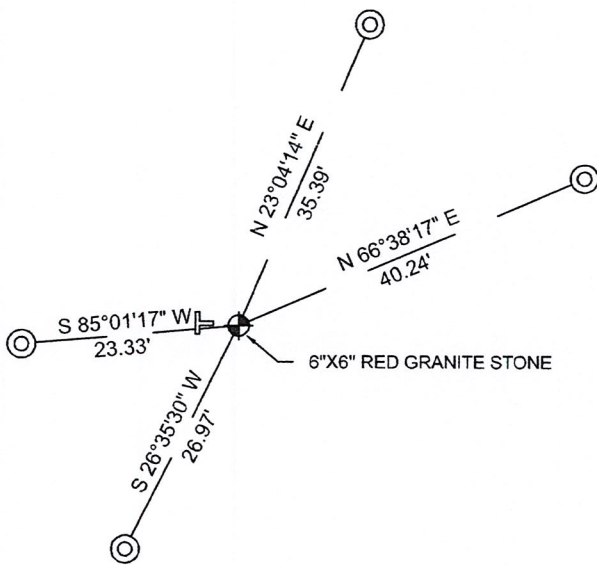
Original Surveyor: James M. Marsh

Date of Original Survey	Commenced:	July 21, 1851	Original Accessories:		
	Completed:	August 11, 1851	Black Pine	10	S 13° E 13 Links
			Black Pine	10	S 20° W 25 Links
			Black Pine	8	N 40° W 13 Links
			Maple	9	N 80° E 6 Links

1930's -1940's - Surveyor Francis Fuchs (aka Francis Fox) was known to set granite stone monuments in this area.

October 18, 2022 - While performing the 2022 Lincoln County PLSS Corner Remonumentation and GPS Services project, I found a 6"x6" red granite stone near the computed position provided by Lincoln County. The monument extends ±15" above ground. I established 4 new reference monuments as shown below.

A-E 7.08(3)(c)(d) Plan view of corner with references to at least 4 witness monuments.



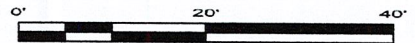
BEARINGS LISTED TO THE NEAREST SECOND ARE REFERENCED TO WISCONSIN COUNTY COORDINATE REFERENCE SYSTEM - LINCOLN COUNTY ZONE. ALL OTHER BEARINGS ARE MAGNETIC



RECEIVED BY LINCOLN COUNTY SURVEYOR THIS 27TH DAY OF December 20 22
Jeffrey DeMuth
 COUNTY SURVEYOR

LEGEND

- 6" x 6" red granite monument, found
- 7/8" diameter X 30" long - iron rod with 2" diameter aluminum cap, set
- Vinyl T-post, set ±4 feet west of corner



A-E 7.08(3)(e) 1851 Surveyor set a post, 1930's - 1940's Surveyor set a granite stone monument. I found a 6"x6" red granite stone.

A-E 7.08(3)(f) I accept this monument as a FOUND PERPETUATED LOCATION of the corner.

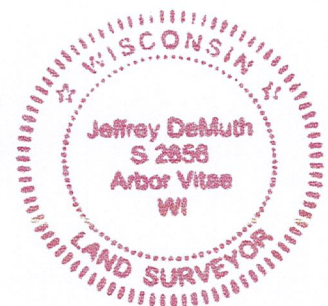
A-E 7.08(3)(g)(h) This corner was not determined through lost-corner-proportionate methods.

A-E 7.08(3)(i) I, Jeffrey L. DeMuth, Professional Land Surveyor No. S-2656, hereby certify that the corner location on this record was determined by the Lincoln County Surveyor, and the monuments found or set as shown hereon were measured by me or under my direction and control, and that this U.S. Public Land Survey Monument Record is correct and complete to the best of my knowledge, and belief.

SIGNATURE

December 14, 2022

DATE



E-25



4327 Cole Road, Crandon, WI 54520
James E. Anderson - 715.784.3485
Jeffrey L. DeMuth – 715.482.5237
Cardinal.north@outlook.com

REPORT

2022-Lincoln County PLSS Corner Remonumentation and GPS Services

Wisconsin Corner Point Identification Number: 43305010000
Surveyor: Jeffrey L. DeMuth – S2656

Corner monument: Found 6" x 6" red granite stone.

Field Book: Cardinal North – Lincoln Co. Remon. – 2022-00
Page: 52

Horizontal Datum: WisCRS – Lincoln County Zone – NAD83(2011)

Date / time of initial measurement:
October 18, 2022 - Start 11:43:05 CDT – End 11:52:58 CDT

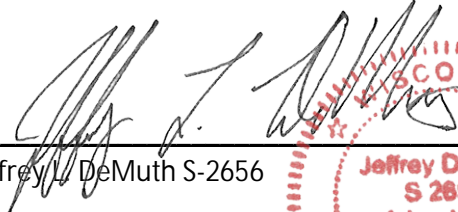
Reference monuments:
4 – Set - 7/8" diameter X 30" long iron rods with 2" diameter Lincoln Co. aluminum cap.

Coordinate Table


	County Provided	2022 Measurement	Difference
North	190417.400	190417.259	0.14
East	364945.210	364945.331	-0.12

Observed coordinates match with existing coordinates within reason.
Request Data Log for more information.

Additional Notes:
Monument extends ±15" above grade.


Jeffrey L. DeMuth S-2656

November 15, 2022
Date



43305010000_Mon-N



4330501000_North



43305010000_West



43305010000_South



43305010000_East

