

LINCOLN COUNTY U.S. PUBLIC LAND TIE SHEET RECORD

SECTION 3
TOWNSHIP 32N
RANGE 4 E

33242

LANDMARK

CORNING
CITY, VILLAGE, TOWN

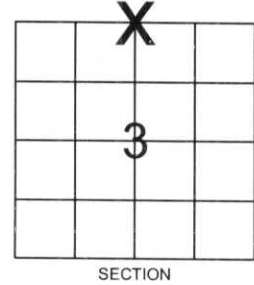
NO.

CORNER INDENTITY: 1.0" IRON PIPE

LINCOLN COUNTY COORDINATE: N: 164250.6115
E: 319573.5717

DATE OF SURVEY: March 16, 2007
SURVEY PARTY: Rutzen/Dahlvig

FOUND
SET
RE-SET
RE-TIED



Description of monument found at this corner and if was accepted, state all evidence (material, testimonial, occupational, plats, records, other monuments) used as a basis for accepting. If not accepted or if nothing was found, state evidence used as basis for establishing location. If reestablished through lost corner proportionate methods, indicate all monuments, distances and directions used to establish.

BASIS FOR MONUMENT LOCATION:

(DESCRIBE METHOD OF SURVEY AND CORNER AUTHENTICATION)

Found 1.0" iron pipe at corner. Blue lines, Property evidence, Bearing trees, and comparison to original notes supports the iron pipe as the corner.



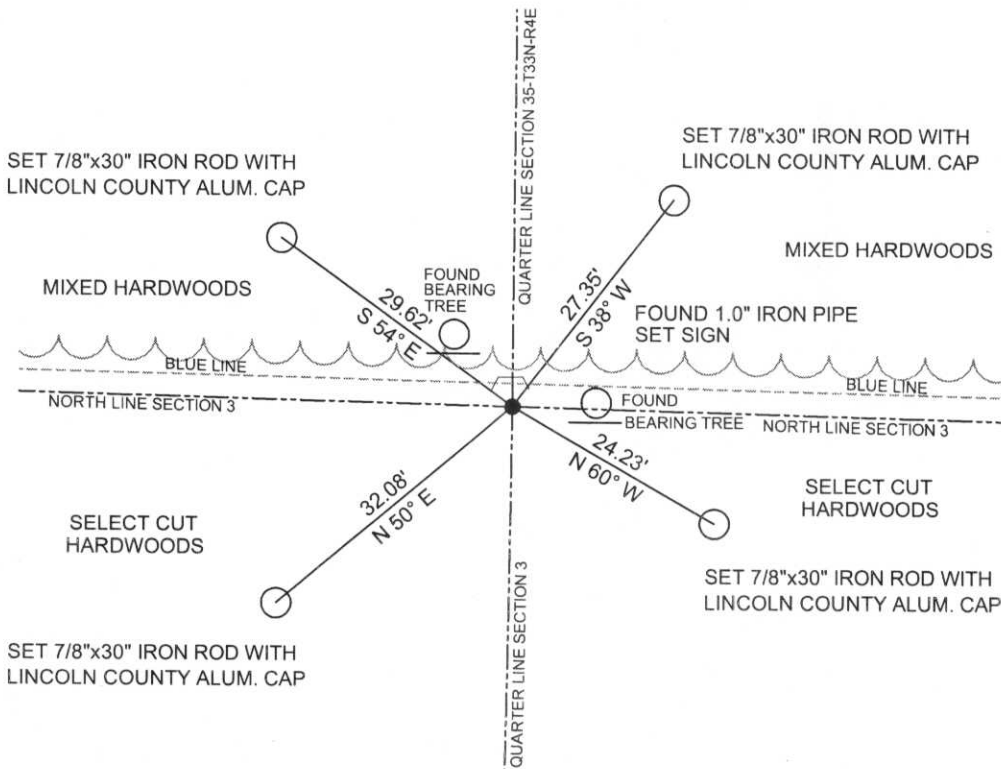
CERTIFIED CORRECT:

Ronald Jacobson
Ronald Jacobson RLS 2059-008
Registered Land Surveyor
DATE: March 29, 2007

COMPANY: Central Wisconsin Engineers & Architects
5707 Schofield Ave.
Weston, Wisconsin 54476
(715) 359-9400

TIE SKETCH:

SHOW MINIMUM OF FOUR (4) HORIZONTAL TIE DISTANCES TO FIXED WITNESS MONUMENTS.
DESCRIBE ALL MONUMENTS FOUND OR SET. ALL DISTANCES SHOWN IN US SURVEY FEET.



RECEIVED BY LINCOLN COUNTY
SURVEYOR THIS 29TH DAY
OF March 2007
Tony Dahl
COUNTY SURVEYOR

COORDINATES ARE REFERENCED TO LINCOLN COUNTY COORDINATE SYSTEM AS DEVELOPED BY THE WI. DEPARTMENT OF TRANSPORTATION AND ARE BASED ON GPS OBSERVATIONS TO CONTROL POINTS AS SUPPLIED BY LINCOLN COUNTY.

NOT TO SCALE
BEARINGS REFERENCED TO MAGNETIC NORTH

A-15









PLEASE
DO NOT
DISTURB
NEARBY

SM
UR
VE



PLEASE
DO NOT
DISTURB
NESTS

SIM
MA