

# LINCOLN COUNTY U.S. PUBLIC LAND TIE SHEET RECORD

SECTION 31  
TOWNSHIP 33N  
RANGE 4 E

313342  
NO.

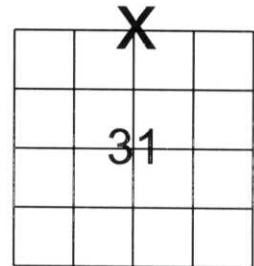
LANDMARK

**CORNING**  
CITY, VILLAGE, TOWN

CORNER INDENTITY: ALUMINUM SWAMP MONUMENT

LINCOLN COUNTY COORDINATE: N: 169794.701  
E: 302939.270

FOUND   
SET   
RE-SET   
RE-TIED



SECTION

Description of monument found at this corner and if was accepted, state all evidence (material, testimonial, occupational, plats, records, other monuments) used as a basis for accepting. If not accepted or if nothing was found, state evidence used as basis for establishing location. If reestablished through lost corner proportionate methods, indicate all monuments, distances and directions used to establish.

## BASIS FOR MONUMENT LOCATION:

(DESCRIBE METHOD OF SURVEY AND CORNER AUTHENTICATION)

Found Wood Post at Corner. Bearing Tree with Tag indicates that corner was visited and held in 1956 by Ivan Hassler. Property evidence, Blaze Lines, Bearing Trees, comparison to the original notes and review of Owens Illinois notes dated June 13, 1969 support the Wood Post as the Corner. Replaced wood post with Lincoln County 4' Aluminum Driveable Swamp Monument.



CERTIFIED CORRECT:

*Ronald Jacobson*

Ronald Jacobson RLS 2059-008

Registered Land Surveyor

DATE: June 27, 2008



**CWE, Inc.**

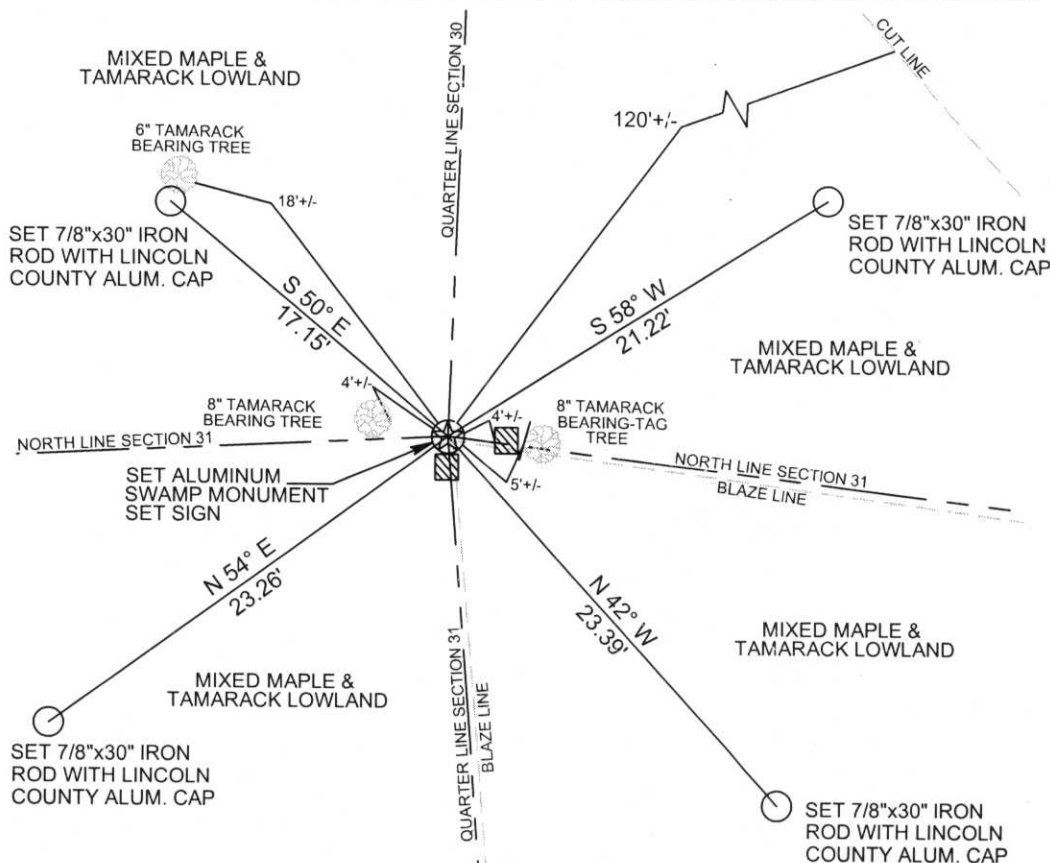
5707 SCHOFIELD AVE.  
WESTON, WISCONSIN  
54476

PHONE: (715) 359-9400  
FAX: (715) 355-4199

general@cwengineers.com  
www.cwengineers.com

## TIE SKETCH:

SHOW MINIMUM OF FOUR (4) HORIZONTAL TIE DISTANCES TO FIXED WITNESS MONUMENTS.  
DESCRIBE ALL MONUMENTS FOUND OR SET. ALL DISTANCES SHOWN IN US SURVEY FEET.



RECEIVED BY LINCOLN COUNTY  
SURVEYOR THIS 27<sup>TH</sup> DAY  
OF June 20 08  
*Tom Dalk*  
COUNTY SURVEYOR

COORDINATES ARE REFERENCED TO LINCOLN COUNTY COORDINATE SYSTEM AS DEVELOPED BY THE WI. DEPARTMENT OF TRANSPORTATION AND ARE BASED ON GPS OBSERVATIONS TO CONTROL POINTS AS SUPPLIED BY LINCOLN COUNTY.

NOT TO SCALE  
BEARINGS REFERENCED TO MAGNETIC NORTH

4-3



Picture 3 – Looking South From Corner



Picture 4 – Looking West From Corner at Bearing Tree



Picture 5 –Set Swamp Monument and Found Wood Post



Picture 6 –Found Wood Post 4' to East of Corner

