

LINCOLN COUNTY U.S. PUBLIC LAND TIE SHEET RECORD

SECTION 31
TOWNSHIP 33N
RANGE 4 E

313343
NO.

LANDMARK

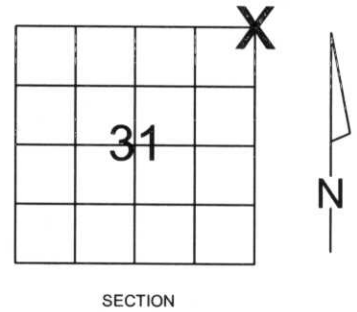
CORNING
CITY, VILLAGE, TOWN

CORNER INDENTITY: FOUND 1.0" IRON PIPE

LINCOLN COUNTY COORDINATE: N: 169469.816
E: 305600.191

DATE OF SURVEY: May 1, 2008
SURVEY PARTY: Eron

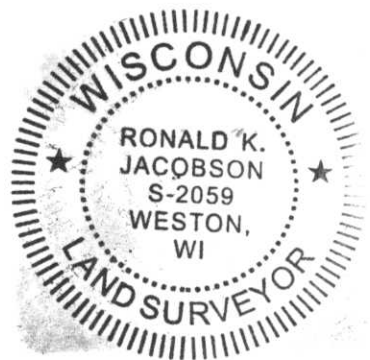
FOUND
SET
RE-SET
RE-TIED



Description of monument found at this corner and if was accepted, state all evidence (material, testimonial, occupational, plats, records, other monuments) used as a basis for accepting. If not accepted or if nothing was found, state evidence used as basis for establishing location. If reestablished through lost corner proportionate methods, indicate all monuments, distances and directions used to establish.

BASIS FOR MONUMENT LOCATION:

(DESCRIBE METHOD OF SURVEY AND CORNER AUTHENTICATION)
Found 1.0" iron pipe at corner. Property evidence, Blue lines, comparison to the original notes and review of Owens Illinois notes dated December 1969 support the 1.0" Iron Pipe as the Corner.



CWE, Inc.

5707 SCHOFIELD AVE.
WESTON, WISCONSIN
54476

PHONE: (715) 359-9400
FAX: (715) 355-4199

general@cwengineers.com
www.cwengineers.com

CERTIFIED CORRECT:

Ronald K. Jacobson

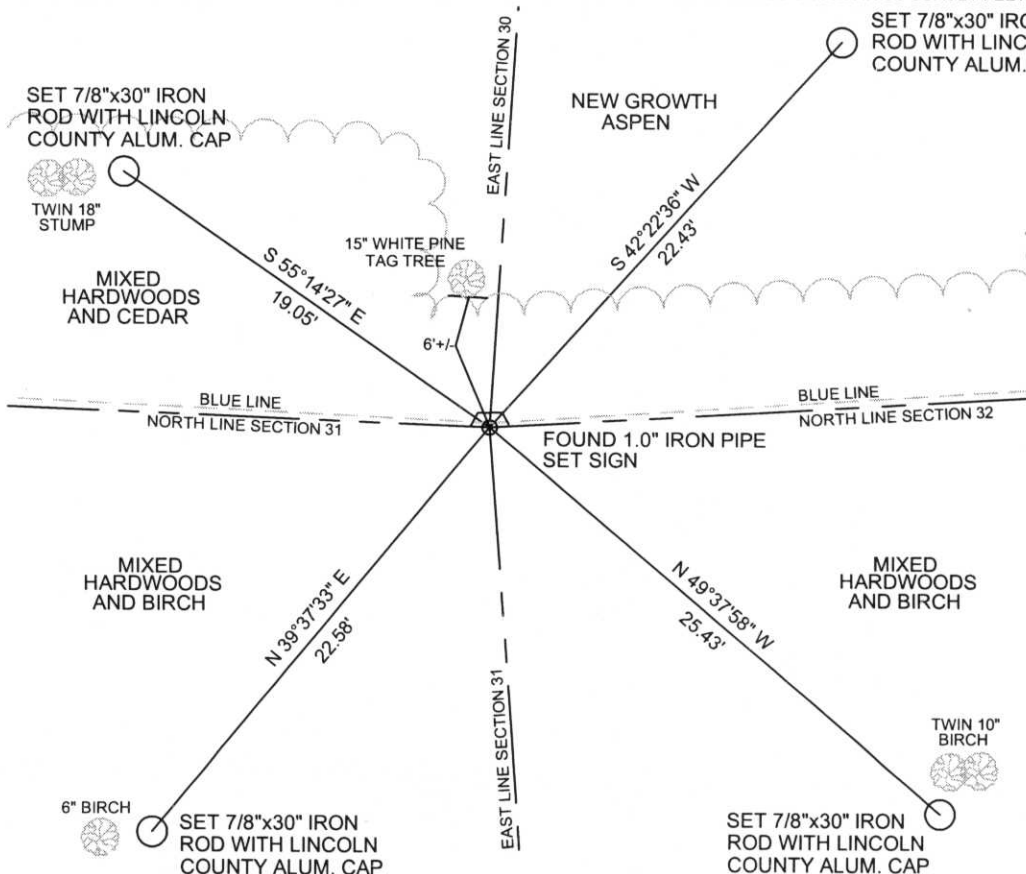
Ronald Jacobson RLS 2059-008

Registered Land Surveyor

DATE: May 23, 2008

TIE SKETCH:

SHOW MINIMUM OF FOUR (4) HORIZONTAL TIE DISTANCES TO FIXED WITNESS MONUMENTS.
DESCRIBE ALL MONUMENTS FOUND OR SET. ALL DISTANCES SHOWN IN US SURVEY FEET.



RECEIVED BY LINCOLN COUNTY
SURVEYOR THIS 29TH DAY
OF May 2008
Tom Dahn
COUNTY SURVEYOR

COORDINATES ARE REFERENCED TO LINCOLN COUNTY COORDINATE SYSTEM AS DEVELOPED BY THE WI. DEPARTMENT OF TRANSPORTATION AND ARE BASED ON GPS OBSERVATIONS TO CONTROL POINTS AS SUPPLIED BY LINCOLN COUNTY.

NOT TO SCALE
BEARINGS REFERENCED TO LINCOLN COUNTY COORDINATE SYSTEM

4-5

Picture 3 – Looking South From Corner



Picture 4 – Looking West From Corner



Picture 5 –Found 1.0 Iron Pipe

