

LINCOLN COUNTY U.S. PUBLIC LAND TIE SHEET RECORD

SECTION 28
TOWNSHIP 33N
RANGE 4 E

283347



LANDMARK

CORNING

CITY, VILLAGE, TOWN

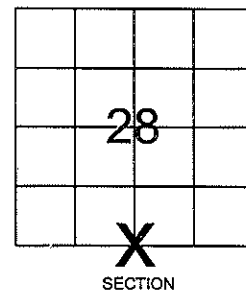
NO.

CORNER IDENTIVITY: BERNSTEN MONUMENT

LINCOLN COUNTY COORDINATE: N: 169746.754
E: 313903.124

DATE OF SURVEY: November 17, 2008
SURVEY PARTY: Eron

FOUND
SET
RE-SET
RE-TIED

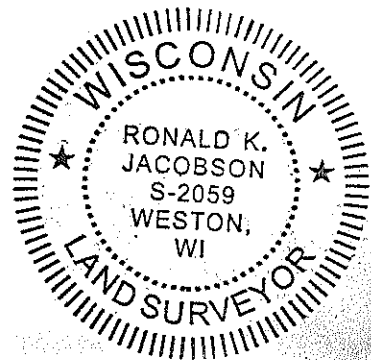


Description of monument found at this corner and if it was accepted, state all evidence (material, testimonial, occupational, plats, records, other monuments) used as a basis for accepting. If not accepted or if nothing was found, state evidence used as basis for establishing location. If reestablished through lost corner proportionate methods, indicate all monuments, distances and directions used to establish.

BASIS FOR MONUMENT LOCATION:

(DESCRIBE METHOD OF SURVEY AND CORNER AUTHENTICATION)

Set Lincoln County Bernsten Monument at Corner. No evidence of the corner remained. Bernsten Monument was set using single proportion measurement method.



CWE, Inc.

5707 SCHOFIELD AVE.
WESTON, WISCONSIN
54476

PHONE: (715) 359-9400
FAX: (715) 355-4199

general@cwengineers.com
www.cwengineers.com

CERTIFIED CORRECT:

Ronald K. Jacobson

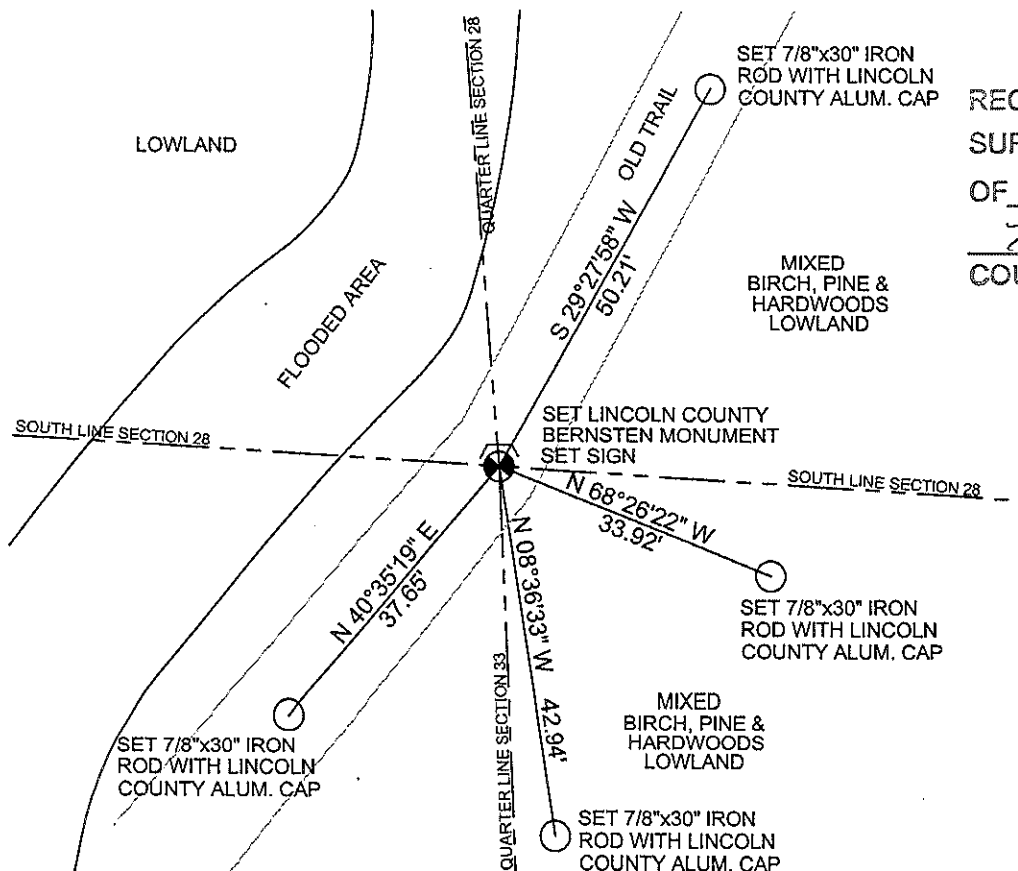
Ronald Jacobson RLS 2059-008

Registered Land Surveyor

DATE: November 24, 2008

TIE SKETCH:

SHOW MINIMUM OF FOUR (4) HORIZONTAL TIE DISTANCES TO FIXED WITNESS MONUMENTS.
DESCRIBE ALL MONUMENTS FOUND OR SET. ALL DISTANCES SHOWN IN US SURVEY FEET.



RECEIVED BY LINCOLN COUNTY
SURVEYOR THIS 26TH DAY
OF November 20 08
Tommy Dalk
COUNTY SURVEYOR

COORDINATES ARE REFERENCED TO LINCOLN COUNTY COORDINATE SYSTEM AS DEVELOPED BY THE WI. DEPARTMENT OF TRANSPORTATION AND ARE BASED ON GPS OBSERVATIONS TO CONTROL POINTS AS SUPPLIED BY LINCOLN COUNTY.

NOT TO SCALE
BEARINGS REFERENCED TO LINCOLN COUNTY COORDINATE SYSTEM

Picture 1 – Looking North From Corner at Flooded Area



Picture 2 – Looking East From Corner



Picture 3 – Looking South From Corner



Picture 4 – Looking West From Corner



Picture 5 –Set Bernsten Monument and Sign at Corner

