

# U.S. PUBLIC LAND SURVEY MONUMENT RECORD

NOTE: This form is intended and designed to fulfill all requirements of Wisconsin Administrative Code, Chapter A-E 7.08 U.S. Public Land Survey Monument Record. An additional sheet may be added if necessary to conform with said requirements.

**CORNER LOCATION**

Quarter Corner common to Sections 25 and 26  
Township 33 North, Range 4 East of the 4th P.M.  
Town of Corning, Lincoln County, Wisconsin

|    |    |    |    |    |    |
|----|----|----|----|----|----|
| 6  | 5  | 4  | 3  | 2  | 1  |
| 7  | 8  | 9  | 10 | 11 | 12 |
| 18 | 17 | 16 | 15 | 14 | 13 |
| 19 | 20 | 21 | 22 | 23 | 24 |
| 30 | 29 | 28 | 27 | 26 | 25 |
| 31 | 32 | 33 | 34 | 35 | 36 |

T33N - R4E

**HISTORY OF ORIGINAL CORNER ESTABLISHMENT**

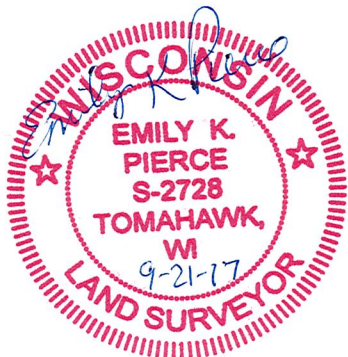
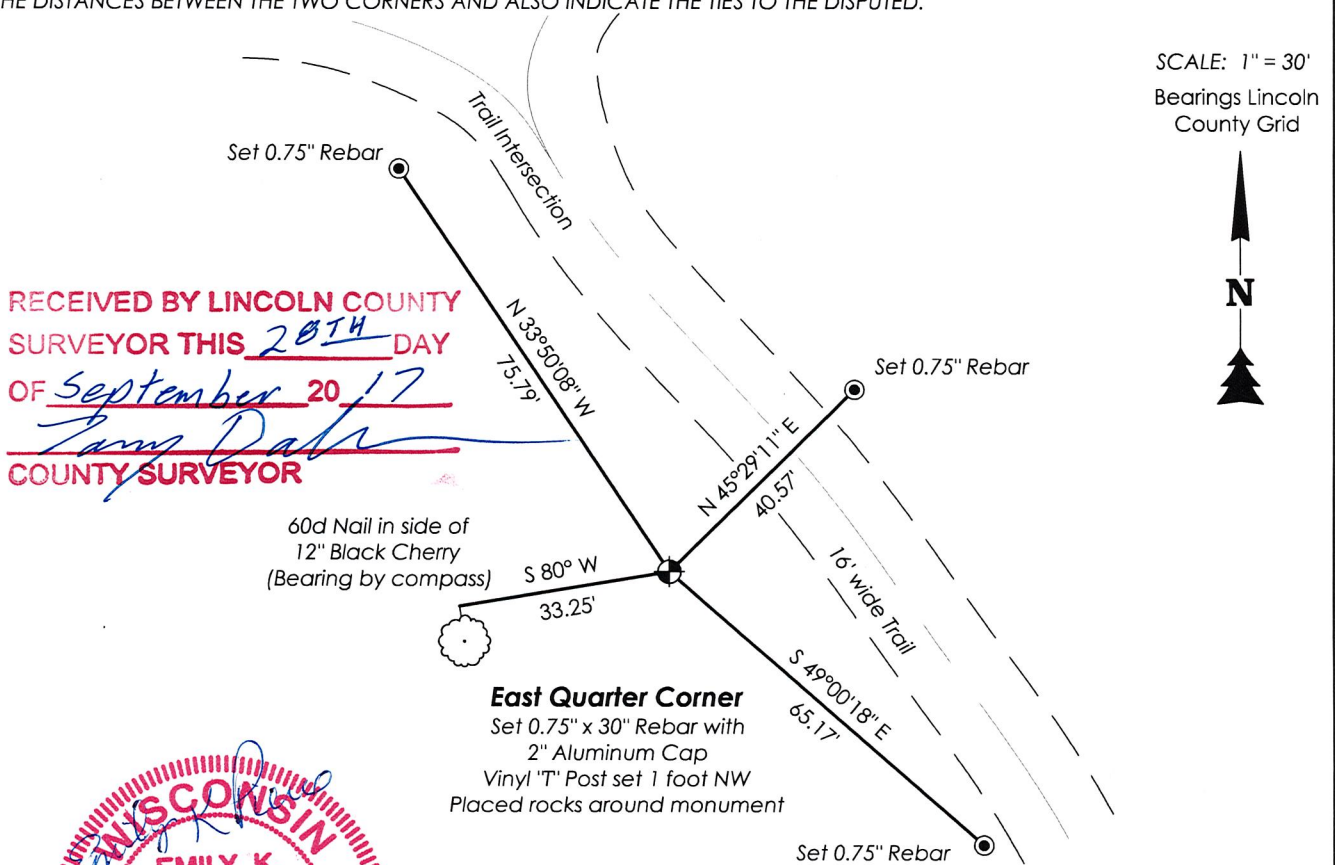
ORIGINAL SURVEYOR: William E. Daugherty  
DATE OF SURVEY: May 1962  
ORIGINAL ACCESSORIES: At 40.0 ch, set quarter section post  
20" Hemlock, N28°E, 30 lks  
14" Birch, S33W, 32 lks

**DESCRIPTION OF MONUMENT FOUND AT THIS CORNER AND IF IT WAS ACCEPTED, STATE ALL EVIDENCE (MATERIAL, TESTIMONIAL, OCCUPATIONAL, PLATS, RECORDS, OTHER MONUMENTS) USED AS A BASIS FOR ACCEPTING. IF NOT ACCEPTED OR IF NOTHING WAS FOUND, STATE EVIDENCE USED AS BASIS FOR ESTABLISHING LOCATION. IF RE-ESTABLISHED THROUGH LOST CORNER PROPORTIONATE METHODS, INDICATE ALL MONUMENTS, DISTANCES AND DIRECTIONS USED TO ESTABLISH. INDICATE TYPE OF MONUMENT AND SIGN POST FOUND OR SET.**

September 20, 2017, I visited corner location and found nothing. Established corner location using single proportion methods between the Southeast Corner of Section 26 and the Northeast Corner of Section 26. This location is consistent with the coordinate values shown on a section summary by R. Jacobson from 11/24/2008. This location is also consistent with that shown on Map L514A done by T. Sommer from 11/22/2016. Map L514A indicates that T. Sommer found a Berntsen monument at this location, but there is no record that one was ever set here. Likewise, during my search no monument was ever discovered.

Set a 0.75" x 30" rebar with a 2" Aluminum Cap at this location. Soil had been disturbed in this location. Placed rocks around monument to help stabilize and set a white vinyl "T" post about 1 foot NW. Measurements to the Northeast Corner and Southeast Corner of Section 26 are N03°56'23"W, 2544.96' and S03°56'23"E, 2544.96', respectively.

**PLAN VIEW OF CORNER WITH TIES TO AT LEAST 4 WITNESS MONUMENTS. IF IN DISAGREEMENT WITH PREVIOUSLY ESTABLISHED CORNER, SHOW THE DISTANCES BETWEEN THE TWO CORNERS AND ALSO INDICATE THE TIES TO THE DISPUTED.**



I, Emily K. Pierce, Professional Land Surveyor No. S-2728, hereby certify that the corner location on this record was determined by me or under my direction and control and that this U.S. Public Land Survey Monument Record is correct and complete to the best of my knowledge and belief.

*Emily K. Pierce*  
Emily K. Pierce, PLS No. S-2728  
STEIGERWALDT LAND SURVEYING, LLC

5-21