

U.S. PUBLIC LAND SURVEY MONUMENT RECORD

NOTE: This form is intended and designed to fulfill all requirements of Wisconsin Administrative Code, Chapter A-E 7.08 U.S Public Land Survey Monument Record (3)(a)(b)(c)(d)(e)(f)(g)(h)(i).

(a) Section Corner Common to 24, 26, 25, and 23, Township 33 North, Range 4 East, Town of Corning, Lincoln County, Wisconsin.



Sec. 26

Corner Coordinates

WISCRS Lincoln County Zone,
NAD83(2011), US Survey foot.

N=169382.08
E=327769.67

(b)(f)(g)(h) Description of monument found at this corner and if it was accepted, state all evidence (material, testimonial, occupational, plats, records, other monuments) used as a basis for accepting. If not accepted or if nothing was found, state evidence used as basis for establishing location. If reestablished through lost corner proportionate methods, indicate all monuments, distances and directions used to establish. Indicate type of monument found or set and sign post.

Original Corner: 1862- William Daugherty set a wood post and recorded the following witnesses:

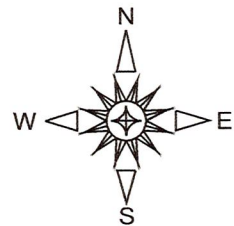
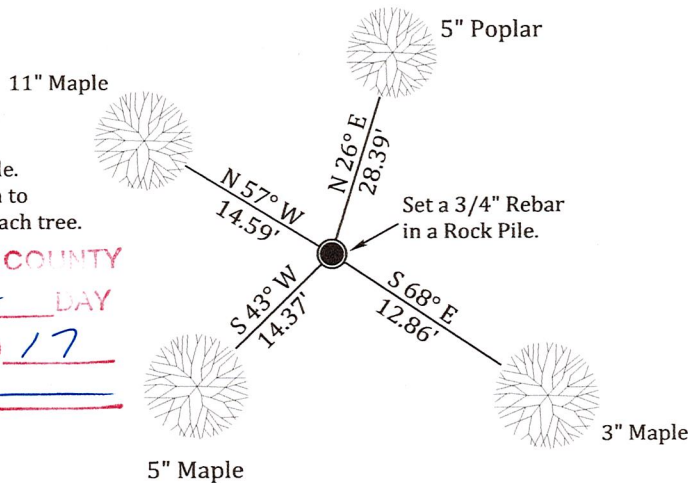
- 18" White Pine N 61° E 20 links
- 14" White Pine S 12° W 12 links

Subsequent Surveys: October 28th 2002: Timothy Greenland completed a survey in section 25 showing that he found and held a wood post set in a rock pile as the section corner.
CSM #412061 Vol.8 Page 130

2017: I recovered the wood post in the rock pile and accepted it as the section corner to sections 26, 25, 35, and 36.

(c)(d)(e) Plan view of corner with ties to at least 4 witness monuments. If in disagreement with previously established corner, show the distances between the two corners and also indicate the ties to the disputed corner.

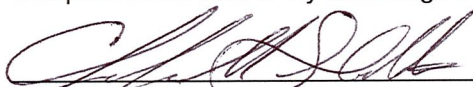
Notes: Sketch not to scale.
All distances were taken to a nail set in the side of each tree.



Bearings are magnetic

RECEIVED BY LINCOLN COUNTY
SURVEYOR THIS 8TH DAY
OF November 20 17
Tommy Oehl
COUNTY SURVEYOR

(i) I, Christopher M. Stebbins, Registered Land Surveyor, hereby certify that the corner location on this record was determined by me or under my direction and control and that this U.S. Public Land Survey Monument Record is correct and complete to the best of my knowledge and belief.


Christopher M. Stebbins P.L.S. 2842 11-5-17 Date



U-21