

U S PUBLIC LAND SURVEY MONUMENT RECORD

NOTE: This form is intended and designed to fulfill all requirements of Wisconsin Administrative Code, Chapter A-E 7.08 U.S. Public Land Survey Monument Record (3) (a-i)

A-E 7.08(3)(a) Identity of corner:
 SOUTH 1/4 CORNER SECTION 25,
 TOWNSHIP 33 NORTH,
 RANGE 04 EAST OF THE 4TH PM,
 TOWN OF CORNING,
 COUNTY OF LINCOLN

WISCORS - LINCOLN COUNTY
 N: 169,383.959 USft (169,383.863)
 E: 330,395.500 USft (330,395.484)
 Datum: NAD83 (2011)
 GNSS Method RTK
 Base from GNSS Control set WISCORS VRS



The coordinate value shown has been verified by the average of two or more GPS observations at a markedly different time. Coordinates shown in parenthesis are provided by Lincoln County.

A-E 7.08(3)(b)

Original Surveyor: William E. Daugherty

Date of Original Survey Commenced: May 11, 1862
 Completed: May 18, 1862

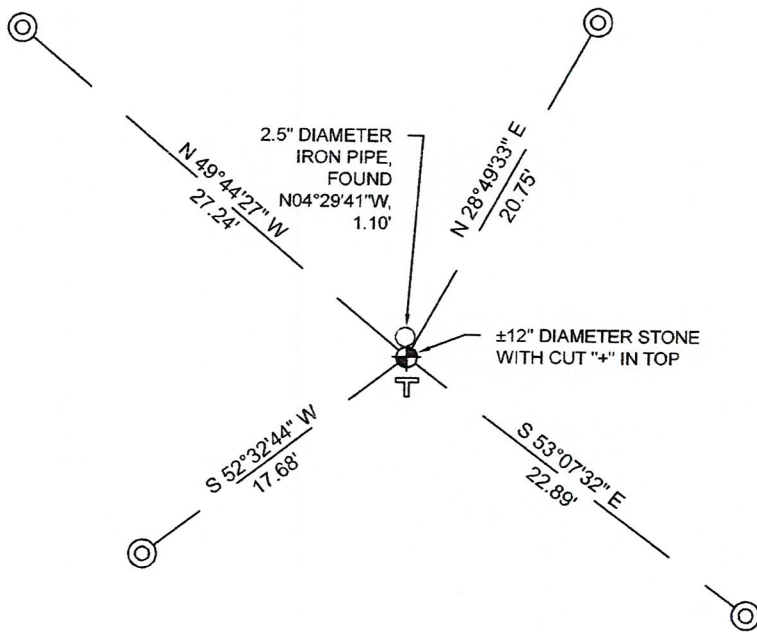
Original Accessories:
 Tamarac 9 N 47° E 8 links
 Tamarac 8 S 62° W 5 links

1930's -1940's - Surveyor Francis Fuchs (aka Francis Fox) was known to set granite stone monuments in this area.

September 26, 2008 - Surveyor 2059 - Ronald K. Jacobson - indicates this position as "found Lincoln County Berntsen monument" on Lincoln county U.S. Public Land Section Summary - Section 36, Township 33 North, Range 4 East.

December 13, 2022 - While performing the 2022 Lincoln County PLSS Corner Remonumentation and GPS Services project, I found a ±12" diameter round stone with cut "+" in the top near the computed position provided by Lincoln County. I also found a 2.5" diameter iron pipe. I established 4 new reference monuments as shown below.

A-E 7.08(3)(c)(d) Plan view of corner with references to at least 4 witness monuments.



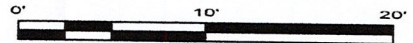
BEARINGS LISTED TO THE NEAREST SECOND ARE REFERENCED TO WISCONSIN COUNTY COORDINATE REFERENCE SYSTEM - LINCOLN COUNTY ZONE. ALL OTHER BEARINGS ARE MAGNETIC



RECEIVED BY LINCOLN COUNTY SURVEYOR THIS 27TH DAY OF December 20 22
Jeffrey DeMuth
 COUNTY SURVEYOR

LEGEND

- Stone with a "+" cut into the top, found
- 7/8" diameter X 30" long - iron rod with 2" diameter aluminum cap, set
- Vinyl T-post, set ±2 feet south of corner



A-E 7.08(3)(e) 1862 Surveyor set a post, 1930's - 1940's Surveyor set a granite stone monument, 2008 Surveyor found a Berntsen Monument. I found a ±12" diameter stone with a "+" cut into the top.

A-E 7.08(3)(f) I accept this monument as a FOUND PERPETUATED LOCATION of the corner.

A-E 7.08(3)(g)(h) This corner was not determined through lost-corner-proportionate methods.

A-E 7.08(3)(i) I, Jeffrey L. DeMuth, Professional Land Surveyor No. S-2656, hereby certify that the corner location on this record was determined by the Lincoln County Surveyor, and the monuments found or set as shown hereon were measured by me or under my direction and control, and that this U.S. Public Land Survey Monument Record is correct and complete to the best of my knowledge, and belief.

SIGNATURE

December 14, 2022

DATE



11-23

REPORT

2022-Lincoln County PLSS Corner Remonumentation and GPS Services

Wisconsin Corner Point Identification Number: 43304250020

Surveyor: Jeffrey L. DeMuth – S2656

Corner monument: Found ±12" diameter round stone with cut "+" in the top.

Field Book: Cardinal North – Lincoln Co. Remon. – 2022-00

Page: 77

Horizontal Datum: WisCRS – Lincoln County Zone – NAD83(2011)

Date / time of initial measurement:

December 13, 2022 - Start 13:52:28 CST – End 14:01:09 CST

Reference monuments:

4 – Set - 7/8" diameter X 30" long iron rods with 2" diameter Lincoln Co. aluminum cap.

1 – 2.5" diameter iron pipe.

Coordinate Table

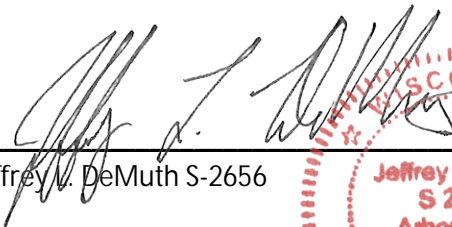
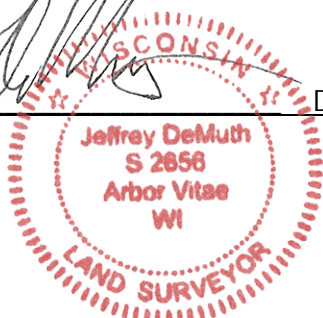
	County Provided	2022 Measurement	Difference
North	169383.863	169383.959	-0.10
East	330395.484	330395.500	-0.02

Observed coordinates match existing calculated coordinates within reason.

Request Data Log for more information.

Additional Notes:

Observed point using base station-Base from GNSS Control set from WISCORS VRS.


Jeffrey L. DeMuth S-2656

December 14, 2022
Date

43304250020_Mon-N



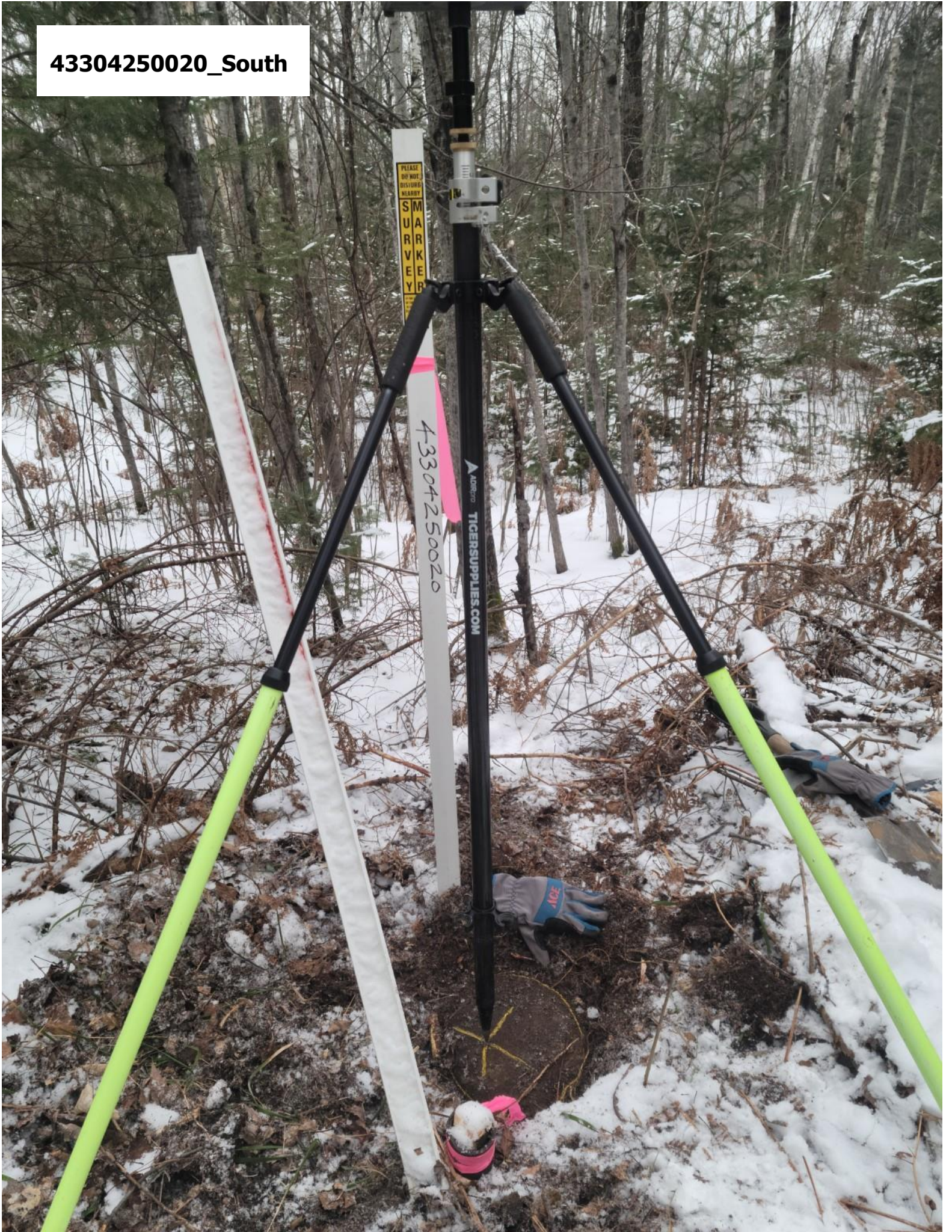
43304250020_North



43304250020_West



43304250020_South



43304250020_East



Pipe_43304250020_Mon-N



Pipe_43304250020_North



Pipe_43304250020_West



Pipe_43304250020_South



Pipe_43304250020_East

