

# U S PUBLIC LAND SURVEY MONUMENT RECORD

NOTE: This form is intended and designed to fulfill all requirements of Wisconsin Administrative Code, Chapter A-E 7.08 U.S. Public Land Survey Monument Record (3) (a-i)

A-E 7.08(3)(a) Identity of corner:  
 SOUTHEAST CORNER SECTION 25,  
 TOWNSHIP 33 NORTH,  
 RANGE 04 EAST OF THE 4TH PM,  
 TOWN OF CORNING,  
 COUNTY OF LINCOLN

WISCORS - LINCOLN COUNTY  
 N: 169,385.687 USft (169,385.653)  
 E: 333,021.340 USft (333,021.295)  
 Datum: NAD83 (2011)  
 GNSS Method RTK  
 Base from GNSS Control set WISCORS VRS



The coordinate value shown has been verified by the average of two or more GPS observations at a markedly different time. Coordinates shown in parenthesis are provided by Lincoln County.

A-E 7.08(3)(b)

Original Surveyor: James M. Marsh

Date of Original Survey Commenced: July 29, 1851  
 Completed: August 11, 1851

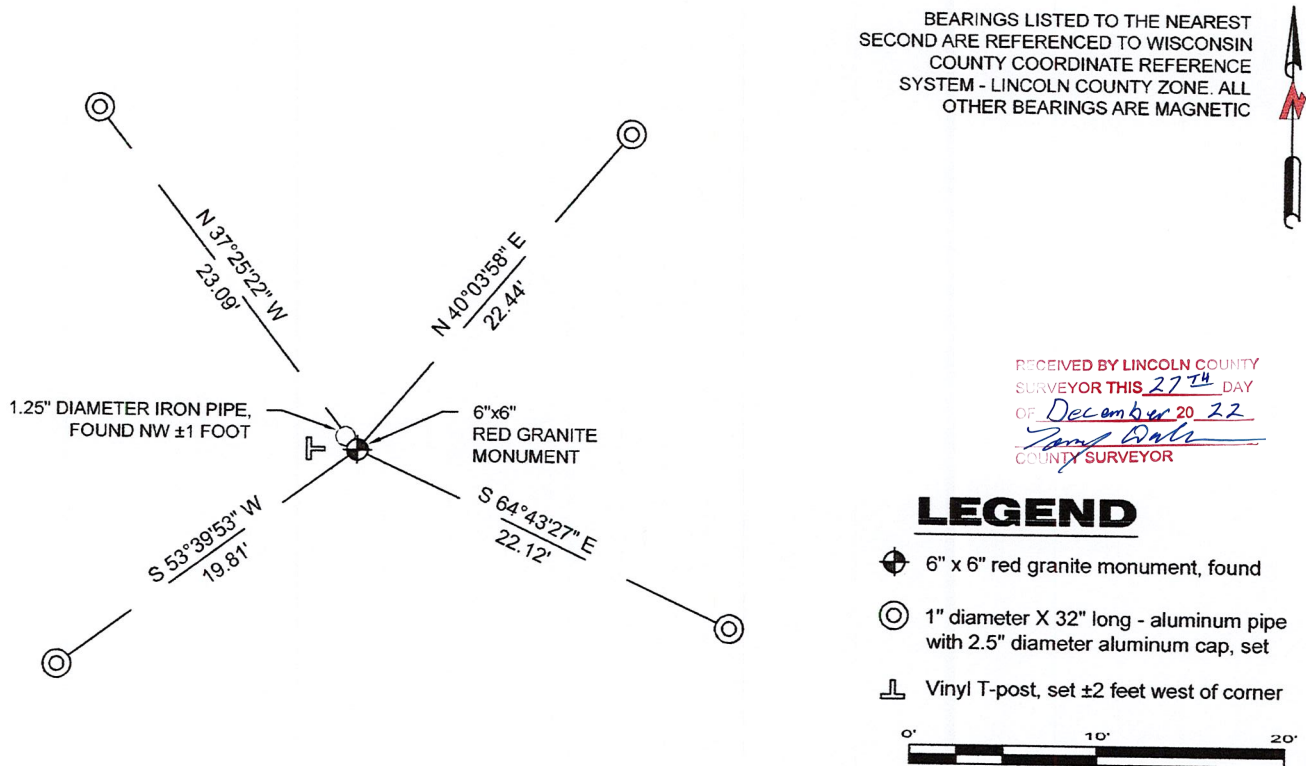
Original Accessories:  
 Spruce 6 S 2° E 14 links  
 Spruce 6 S 30° W 15 links  
 Tamarack 8 N 1° W 115 links  
 Tamarack 8 N 7° E 105 links

1930's -1940's - Surveyor Francis Fuchs (aka Francis Fox) was known to set granite stone monuments in this area.

September 26, 2008 - Surveyor 2059 - Ronald K. Jacobson - indicates this position as "found stone monument" on Lincoln county U.S. Public Land Section Summary - Section 36, Township 33 North, Range 4 East.

December 13, 2022 - While performing the 2022 Lincoln County PLSS Corner Remonumentation and GPS Services project, I found a 6"x 6" red granite stone near the computed position provided by Lincoln County. I also found a 1.25" diameter iron pipe. I established 4 new reference monuments as shown below.

A-E 7.08(3)(c)(d) Plan view of corner with references to at least 4 witness monuments.

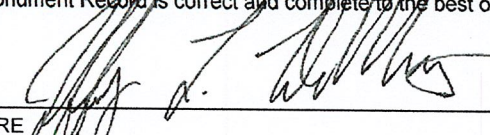


A-E 7.08(3)(e) 1851 Surveyor set a post, 1930's - 1940's Surveyor set a granite stone monument, 2008 Surveyor found a stone monument. I found a 6" x 6" red granite stone.

A-E 7.08(3)(f) I accept this monument as a FOUND PERPETUATED LOCATION of the corner.

A-E 7.08(3)(g)(h) This corner was not determined through lost-corner-proportionate methods.

A-E 7.08(3)(i) I, Jeffrey L. DeMuth, Professional Land Surveyor No. S-2656, hereby certify that the corner location on this record was determined by the Lincoln County Surveyor, and the monuments found or set as shown hereon were measured by me or under my direction and control, and that this U.S. Public Land Survey Monument Record is correct and complete to the best of my knowledge, and belief.

SIGNATURE  DATE December 14, 2022



U-25

## REPORT

### 2022-Lincoln County PLSS Corner Remonumentation and GPS Services

Wisconsin Corner Point Identification Number: 43304250000

Surveyor: Jeffrey L. DeMuth – S2656

Corner monument: Found 6" x 6" red granite stone.

Field Book: Cardinal North – Lincoln Co. Remon. – 2022-00

Page: 78

Horizontal Datum: WisCRS – Lincoln County Zone – NAD83(2011)

Date / time of initial measurement:

December 13, 2022 - Start 11:54:57 CST – End 12:12:31 CST

Reference monuments:

4 – Set - 1" diameter X 32" long aluminum pipe with 2.5" diameter Lincoln Co. aluminum cap.

1 – Found – 1.25" diameter iron pipe.

#### Coordinate Table

	County Provided	2022 Measurement	Difference
North	169385.653	169385.687	-0.03
East	333021.295	333021.340	-0.04

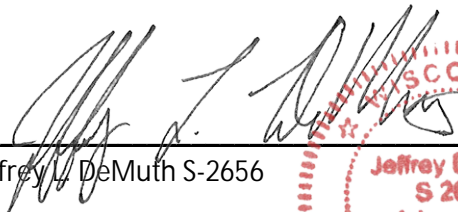
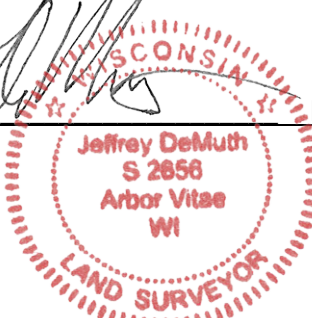
Observed coordinates match with existing coordinates within reason.

Request Data Log for more information.

Additional Notes:

Corner falls in a black spruce swamp.

Observed point using base station-Base from GNSS Control set from WISCORS VRS.

  
 Jeffrey L. DeMuth S-2656
 
 December 14, 2022  
 Date

43304250000\_Mon-N



4330425000\_North



43304250000\_West

PUBLIC  
HUNTING  
AND  
FISHING  
GROUNDS

TIGERSUPPLIES.COM



43304250000\_South



4330425000\_East

