

LINCOLN COUNTY U.S. PUBLIC LAND TIE SHEET RECORD

SECTION 24
TOWNSHIP 33N
RANGE 4 E

243345
NO.

CORNING
CITY, VILLAGE, TOWN

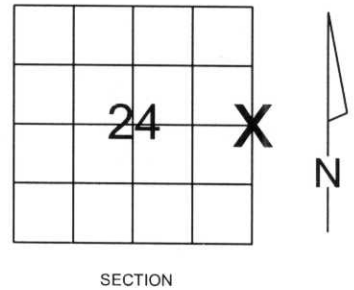
LANDMARK

CORNER INDENTITY: 6x6 GRANITE MONUMENT

LINCOLN COUNTY COORDINATE: N: 177326.170
E: 333094.656

DATE OF SURVEY: January 14, 2008
SURVEY PARTY: Eron

FOUND
SET
RE-SET
RE-TIED



Description of monument found at this corner and if was accepted, state all evidence (material, testimonial, occupational, plats, records, other monuments) used as a basis for accepting. If not accepted or if nothing was found, state evidence used as basis for establishing location. If reestablished through lost corner proportionate methods, indicate all monuments, distances and directions used to establish.

BASIS FOR MONUMENT LOCATION:

(DESCRIBE METHOD OF SURVEY AND CORNER AUTHENTICATION)
Found 6x6 Granite Monument and 1.0" Iron Pipe at corner. Blue lines, Property evidence, and comparison to the original notes supports the 6x6 Granite Monument as corner.



CWE, Inc.

5707 SCHOFIELD AVE.
WESTON, WISCONSIN
54476

PHONE: (715) 359-9400
FAX: (715) 355-4199

general@cwengineers.com
www.cwengineers.com

CERTIFIED CORRECT:

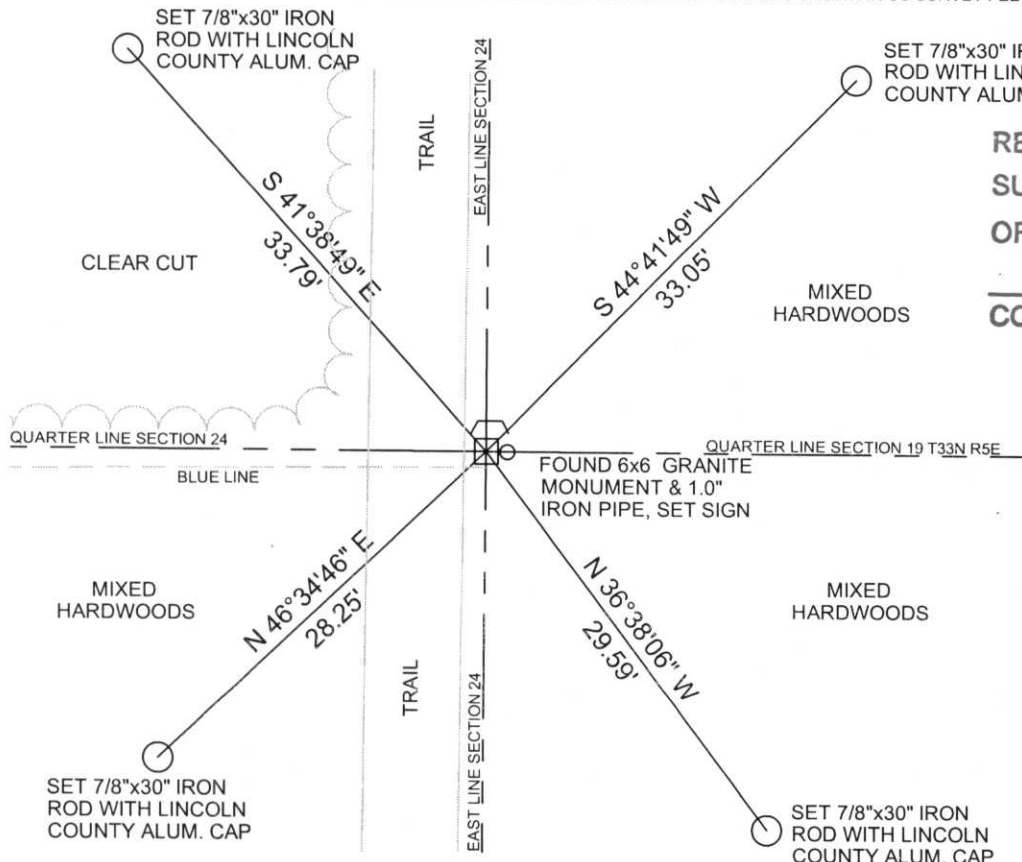
Ronald Jacobson
Ronald Jacobson RLS 2059-008

Registered Land Surveyor

DATE: January 25, 2008

TIE SKETCH:

SHOW MINIMUM OF FOUR (4) HORIZONTAL TIE DISTANCES TO FIXED WITNESS MONUMENTS.
DESCRIBE ALL MONUMENTS FOUND OR SET. ALL DISTANCES SHOWN IN US SURVEY FEET.



RECEIVED BY LINCOLN COUNTY
SURVEYOR THIS 24TH DAY
OF January 20 08
Tony Dallen
COUNTY SURVEYOR

COORDINATES ARE REFERENCED
TO LINCOLN COUNTY COORDINATE
SYSTEM AS DEVELOPED BY THE WI.
DEPARTMENT OF TRANSPORTATION
AND ARE BASED ON GPS OBSERVATIONS
TO CONTROL POINTS AS SUPPLIED BY
LINCOLN COUNTY.

NOT TO SCALE
BEARINGS REFERENCED
TO LINCOLN COUNTY
COORDINATE SYSTEM

0-25

Picture 1 – Looking North From Corner at Cut Line



Picture 2 – Looking East From Corner



Picture 3 – Looking South From Corner



Picture 4 – Looking West From Corner at Blue line and Cut Line



Picture 5 –Found 6x6 Granite Stone with a 1 Inch Iron Pipe at Corner

