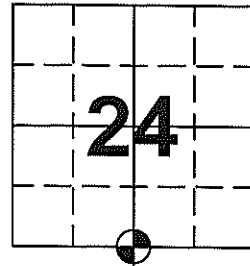


U.S. PUBLIC LAND SURVEY MONUMENT RECORD

Note: This form is intended and designed to fulfill all requirements of Wisconsin Administrative Code, Chapter A-E 7.08, U.S. Public Land Survey Monument Record (3) (a) (b) (c) (d) (e) (f) (g) (h) (i). An additional sheet may be added if necessary to conform with said requirements.

(a) Corner location: Township 33 North
 Range 4 East
 Town/City/ Village Corning
 County Lincoln

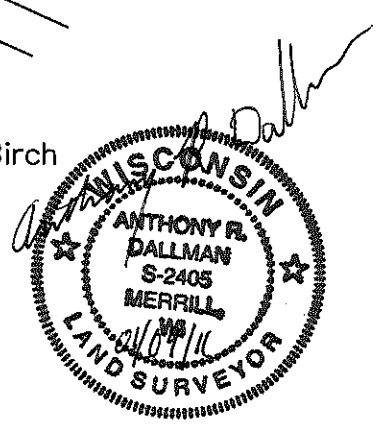
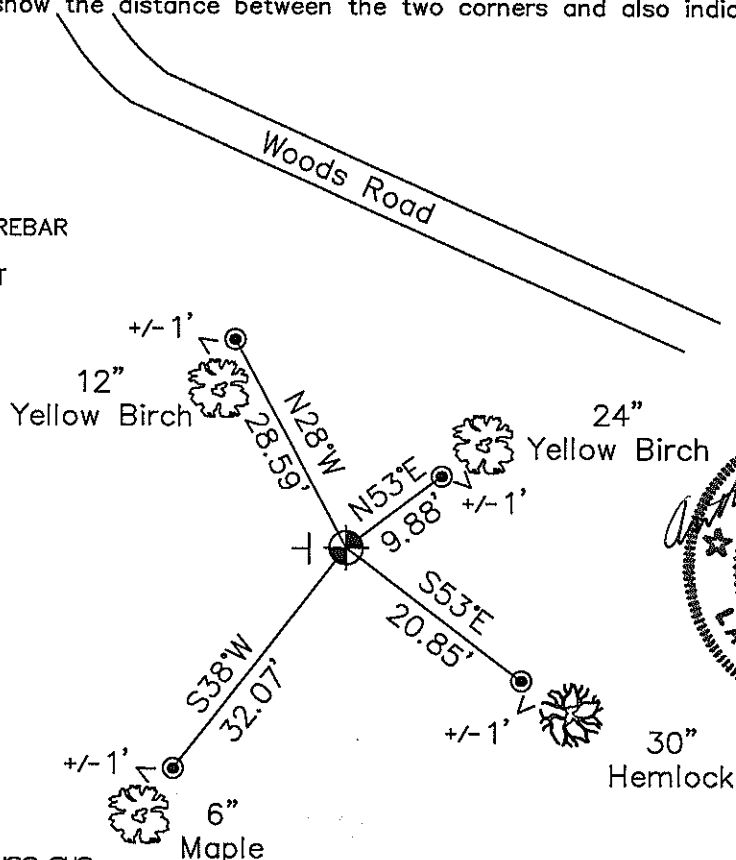


(b) (f) (g) (h) Description of monument found at this corner and if it was accepted, state all evidence (material, testimonial, occupational, plats, records, other monuments) used as basis for accepting. If not accepted or if nothing was found, state evidence used as basis for establishing location. If reestablished through lost corner proportionate methods, indicate all monuments, distances and directions used to establish.

- 1862 – Daugherty, William E. set quarter Section post Birch 12 N32°W 20 Links
 Hemlock 12 S20°E 8 Links
- 1961 – Joseph Kirby, Genisot Engineering Co. Rhinelander WI, subdivided Sections 23 and 24 as shown on survey maps L376A and L480B on file in Lincoln County Land Information Office.
- 2010 – Anthony Dallman set Berntsen monument per said Genisot map. Berntsen monument set up 4", approx 40' South/Southwest of woods road. Ties shown below.

(c) (d) (e) Plan view of corner with ties to at least 4 witness monuments. If in disagreement with previously established corner, show the distance between the two corners and also indicate the ties to the disputed corner.

- SET LINCOLN COUNTY BERNTSEN MONUMENT
 - SET ALUMINUM CAPPED REBAR
 - SET WHITE VINYL T-POST
- NOT TO SCALE



(i) I, Anthony Dallman

(type or print name) certify that the corner location on this record was determined by me or under my direction and control and that this U.S. Public Land Survey Monument Record is correct and complete to the best of my knowledge and belief.

Anthony Dallman
 Signature

01/04/11
 Date

Index No. Q-23