

U.S. PUBLIC LAND SURVEY MONUMENT RECORD

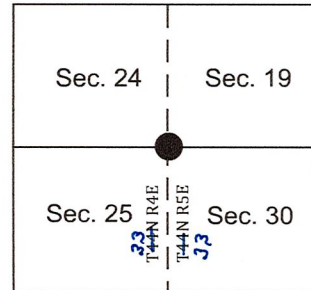
NOTE: This form is intended and designed to fulfill all requirements of Wisconsin Administrative Code, Chapter A-E 7.08 U.S Public Land Survey Monument Record (3)(a)(b)(c)(d)(e)(f)(g)(h)(i).

(a) Section Corner Common to 24, 19, 25, and 30, Township 33 North, Range 4 and 5 East, Town of Corning, Lincoln County, Wisconsin.

Corner Coordinates

WISCRS Lincoln County Zone,
NAD83(2011), US Survey foot.

N=174676.50
E=333069.48



(b)(f)(g)(h) Description of monument found at this corner and if it was accepted, state all evidence (material, testimonial, occupational, plats, records, other monuments) used as a basis for accepting. If not accepted or if nothing was found, state evidence used as basis for establishing location. If reestablished through lost corner proportionate methods, indicate all monuments, distances and directions used to establish. Indicate type of monument found or set and sign post.

Original Corner: 1851- J.M. Marsh set a wood post and recorded the following witnesses:
 -8" Hemlock S 86° E 22 links
 -8" Spruce S 81° W 10 links
 -7" Birch N 25° W 29 links
 -11" Maple N 1° E 13 links

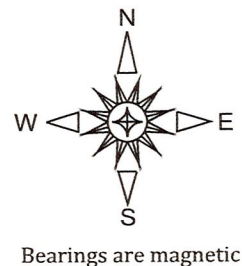
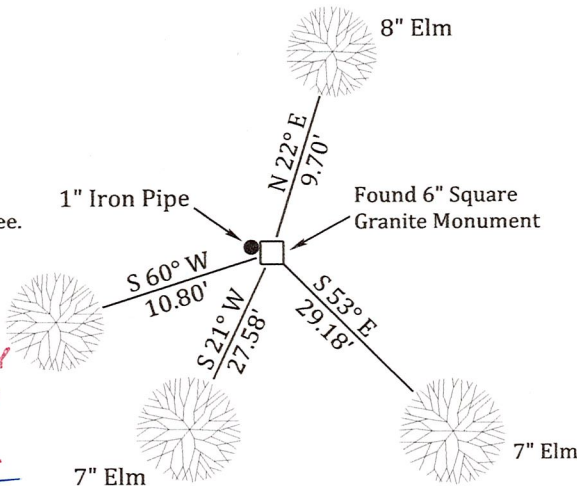
Subsequent Surveys: 1930's - 1940's, Francis Fox recovered a pipe set at a fence line and accepted it as the corner position, exact date unknown. He set a granite stone and recorded the following witnesses:

- 127' South to River
- Birch BT (old) SE 22.1
- 295' East to River

2017: I recovered the granite monument in good condition. The distances to the river checked; however, I did not recover the birch bearing tree. This granite monument has been used and accepted as the corner position on two filed surveys, maps L376A and S473A. I accepted the granite stone as the corner to sections 24, 25, 19, and 30.

(c)(d)(e) Plan view of corner with ties to at least 4 witness monuments. If in disagreement with previously established corner, show the distances between the two corners and also indicate the ties to the disputed corner.

Notes: Sketch not to scale.
All distances were taken to a nail set in the side of each tree.



RECEIVED BY LINCOLN COUNTY SURVEYOR THIS 8TH DAY OF November 20 17
Tommy Dahl
COUNTY SURVEYOR

(i) I, Christopher M. Stebbins, Registered Land Surveyor, hereby certify that the corner location on this record was determined by me or under my direction and control and that this U.S. Public Land Survey Monument Record is correct and complete to the best of my knowledge and belief.

Christopher M. Stebbins 11-5-17
Christopher M. Stebbins P.L.S. 2842 Date



0-25