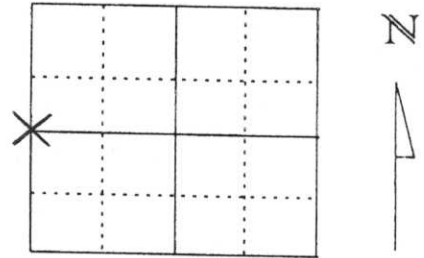


U.S. PUBLIC LAND SURVEY MONUMENT RECORD

Note: This form is intended and designed to fulfill all requirements of Wisconsin Administrative Code, Chapter A-E 5.02, U.S. Public Land Survey Monument Record (3) (a) (b) (c) (d) (e) (f) (g) (h) (l). An additional sheet may be added if necessary to conform with said requirements.

(a) Corner location: Township 33 North
 Range 4 East
 Town/City/Village CORNING
 County Lincoln



Section 24

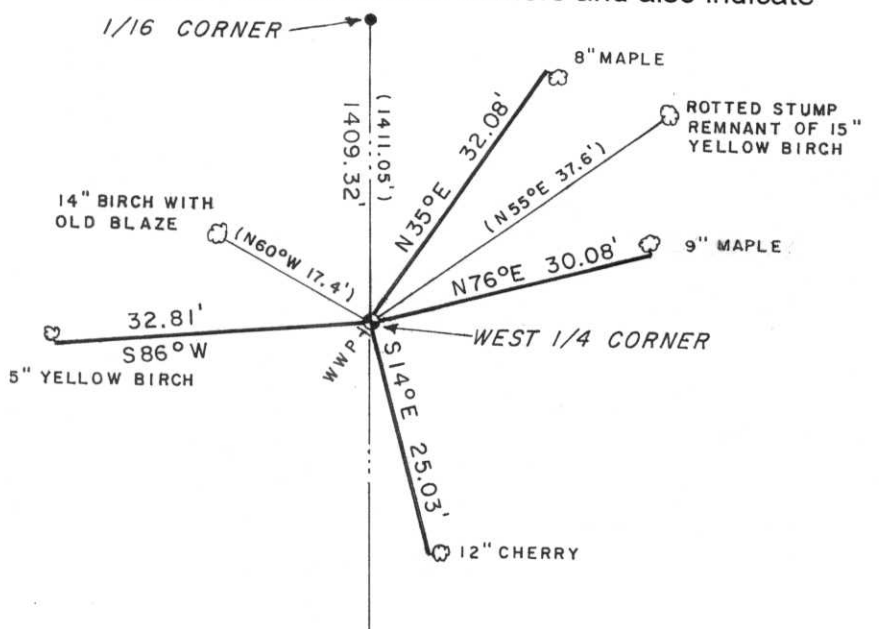
(b) (f) (g) (h) Description of monument found at this corner and if it was accepted, state all evidence (material, testimonial, occupational, plats, records, other monuments) used as a basis for accepting. If not accepted or if nothing was found, state evidence used as basis for establishing location. If reestablished through lost corner proportionate methods, indicate all monuments, distances and directions used to establish.

MAY OF 1862 WILLIAM E. DAUGHERTY SET QUARTER SECTION POST WITH THE FOLLOWING TIES: BIRCH 12 N72°E, 54 LINKS AND HEMLOCK 14 S46°W, 20 LINKS. ON 2-23-61 JOSEPH KIRBY PREPARED A PLAT OF SURVEY MAP SHOWING THE WEST ¼ CORNER WITH THE FOLLOWING TIES: YELLOW BIRCH 15" N55°E, 37.6 FEET AND WHITE BIRCH 6" N60°W, 17.4 FEET. WE SURVEYED INTO WEST ¼ CORNER LOCATION BASED ON PLAT OF SURVEY DISTANCES. WE FOUND THE ROTTED STUMP REMNANT OF 15" YELLOW BIRCH TIE AND A 14" BIRCH WITH OLD BLAZE. INTERSECTED DISTANCES FROM TREE TIES, LOCATION FIT DISTANCE ON PLAT OF SURVEY. ACCEPTED LOCATION AS THE WEST ¼ CORNER AND SET A LINCOLN COUNTY BERNTSEN MONUMENT AND TIED OUT AS SHOWN BELOW.

(c) (d) (e) Plan view of corner with ties to at least 4 witness monuments. If in disagreement with previously established corner, show the distances between the two corners and also indicate the ties to the disputed corner.

LEGEND

- EXISTING 1" I. D. IRON PIPE
- ⊙ SET LINCOLN COUNTY BERNTSEN ALUMINUM MONUMENT
- ⊥ WWP WHITE WITNESS POST
- ALL TIE POINTS ON TREES ARE TO PK NAILS IN BLAZE



RECEIVED BY LINCOLN COUNTY
 SURVEYOR THIS 12TH DAY
 OF March 20 06
Tommy Dahl
 COUNTY SURVEYOR

(l) I, DAVID J. GOSLIN
 (type or print name) certify that the corner location on this record was determined by me or under my direction and control and that this U.S. Public Land Survey Monument Record is correct and complete to the best of my knowledge and belief.

David J. Goslin
 Signature



2-27-06
 Date

Index No. 0-21