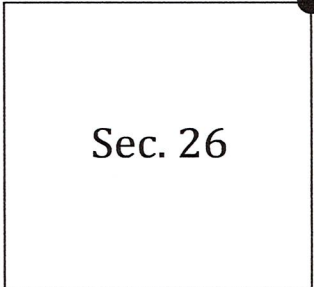


U.S. PUBLIC LAND SURVEY MONUMENT RECORD

NOTE: This form is intended and designed to fulfill all requirements of Wisconsin Administrative Code, Chapter A-E 7.08 U.S Public Land Survey Monument Record (3)(a)(b)(c)(d)(e)(f)(g)(h)(i).

(a) Section Corner Common to 24, 26, 25, and 23, Township 33 North, Range 4 East, Town of Corning, Lincoln County, Wisconsin.



Corner Coordinates

WISCRS Lincoln County Zone,
NAD83(2011), US Survey foot.

N=174459.97
E=327419.97

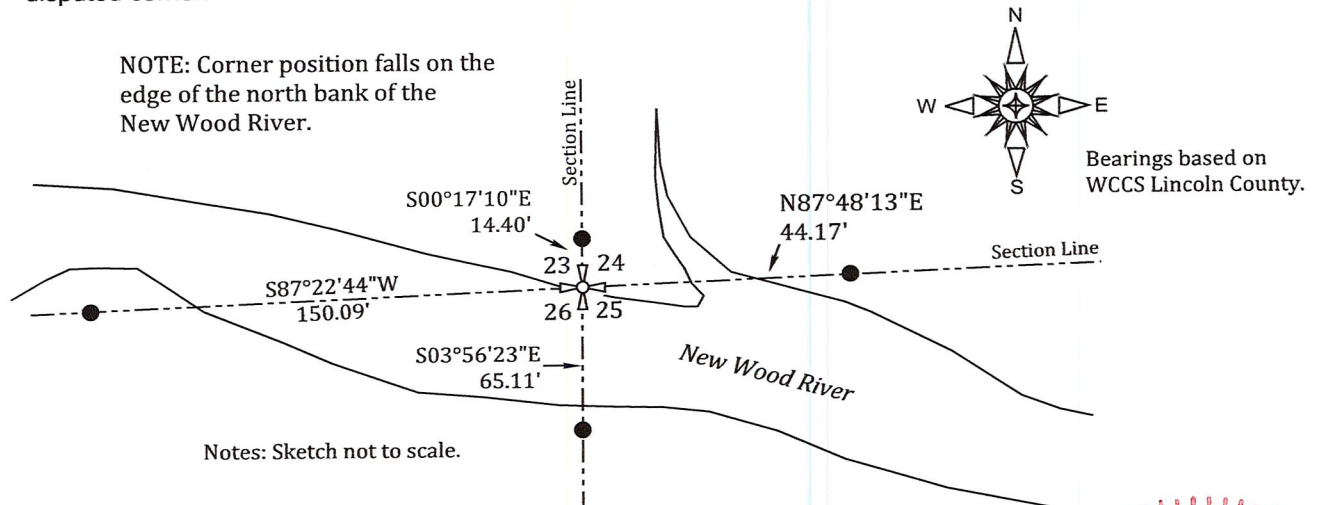
(b)(f)(g)(h) Description of monument found at this corner and if it was accepted, state all evidence (material, testimonial, occupational, plats, records, other monuments) used as a basis for accepting. If not accepted or if nothing was found, state evidence used as basis for establishing location. If reestablished through lost corner proportionate methods, indicate all monuments, distances and directions used to establish. Indicate type of monument found or set and sign post.

Original Corner: 1862- William Daugherty set a wood post and recorded the following witnesses:
-10" Cedar N 45° E 16 links
-8" Fir S 22° W 9 links

Subsequent Surveys: 1961- Genisot Engineering Co., subdivided sections twenty-four and twenty- three as shown on survey maps L480B and L376A.

2018: I searched the computed position for any G.L.O. or subsequent survey evidence. Finding none, I set the corner per the Genisot Engineering section breakdown.

(c)(d)(e) Plan view of corner with ties to at least 4 witness monuments. If in disagreement with previously established corner, show the distances between the two corners and also indicate the ties to the disputed corner.

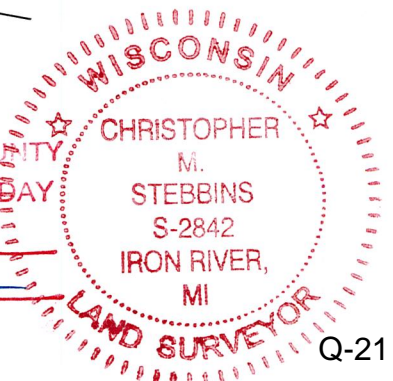


LEGEND

- Computed Position
- Set 5/8" Rebar

(i) I, Christopher M. Stebbins, Registered Land Surveyor, hereby certify that the corner location on this record was determined by me or under my direction and control and that this U.S. Public Land Survey Monument Record is correct and complete to the best of my knowledge and belief.

RECEIVED BY LINCOLN COUNTY SURVEYOR THIS 20TH DAY OF March 2018
Tom Dufek
COUNTY SURVEYOR



Christopher M. Stebbins P.L.S. 2842
Date 3-25-18