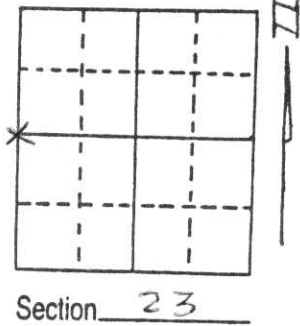


U.S. PUBLIC LAND SURVEY MONUMENT RECORD

Note: This form is intended and designed to fulfill all requirements of Wisconsin Administrative Code, Chapter A-E 5.02, U.S. Public Land Survey Monument Record (3) (a) (b) (c) (d) (e) (f) (g) (h) (i). An additional sheet may be added if necessary to conform with said requirements.

(a) Corner location: Township 33 North
 Range 4 East

Town/City/Village CORNING
 County LINCOLN

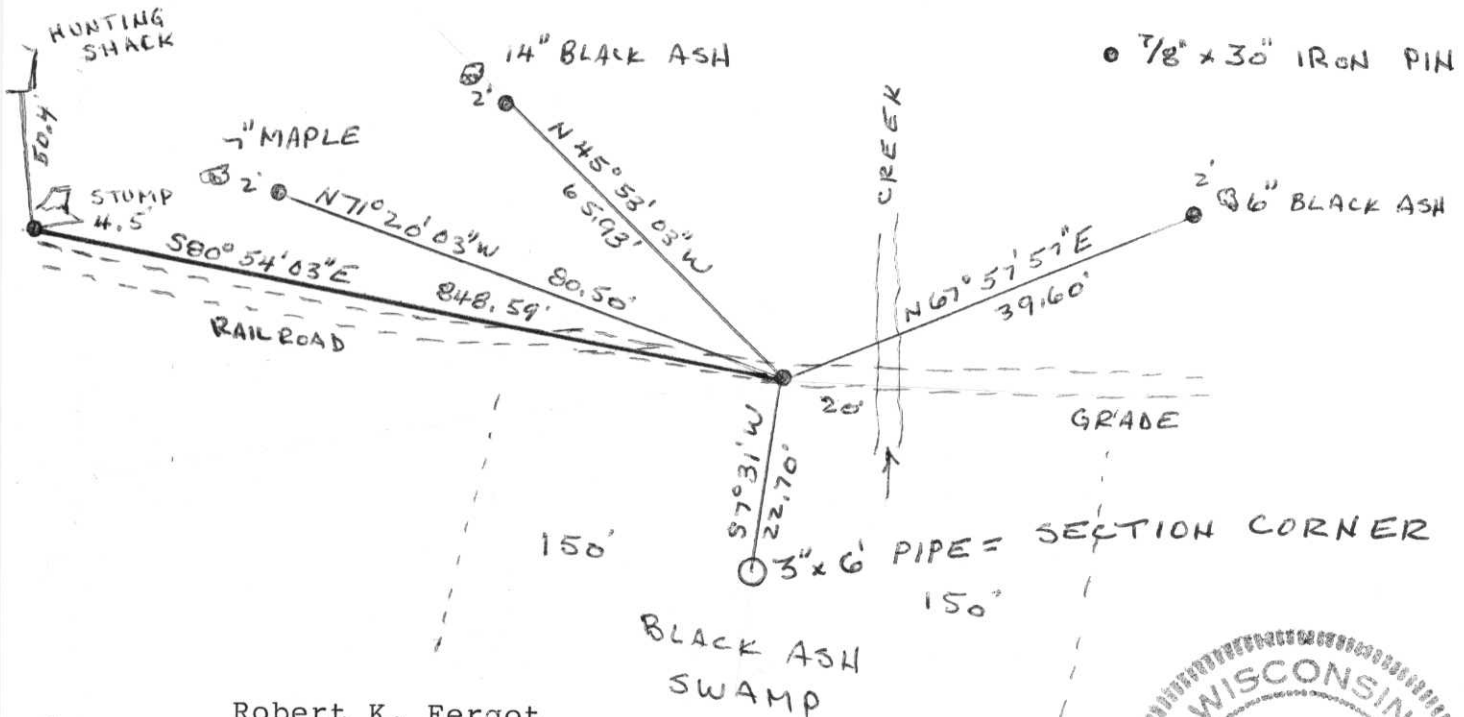


(b) (f) (g) (h) Description of monument found at this corner and if it was accepted, state all evidence (material, testimonial, occupational, plats, records, other monuments) used as a basis for accepting. If not accepted or if nothing was found, state evidence used as basis for establishing location. If reestablished through lost corner proportionate methods, indicate all monuments, distances and directions used to establish.

Found 8 inch square wood post with corner identification scribed sides, located in small black ash swamp 20 feet south of old railroad grade. Accepted as corner used in 1961 Genisot survey.

RECEIVED AT LINCOLN COUNTY
 COURTHOUSE THIS 23rd DAY
 OF March 19 98
Pat Pribe
 TAX DESCRIPTION OFFICE

(c) (d) (e) Plan view of corner with ties to at least 4 witness monuments. If in disagreement with previously established corner, show the distances between the two corners and also indicate the ties to the disputed corner.



Robert K. Fergot

(i) I, _____
 (type or print name) certify that the corner location on this record was determined by me or under my direction and control and that this U.S. Public Land Survey Monument Record is correct and complete to the best of my knowledge and belief.

Robert K. Fergot March 17, 1998
 Signature Date



Index No. D-17

VEYER
SM 110

10 20 30 40 50 60 70 80 90 100
10 20 30 40 50 60 70 80 90 100
259 P ITALY





