

# U.S. PUBLIC LAND SURVEY MONUMENT RECORD

Note: This form is intended and designed to fulfill all requirements of Wisconsin Administrative Code, Chapter A-E 7.08, U.S. Public Land Survey Monument Record (3) (a) (b) (c) (d) (e) (f) (g) (h) (i). An additional sheet may be added if necessary to conform with said requirements.

(a) Corner location: Township 33 North

Range 4 East

Town/City/Village Corning

County Lincoln



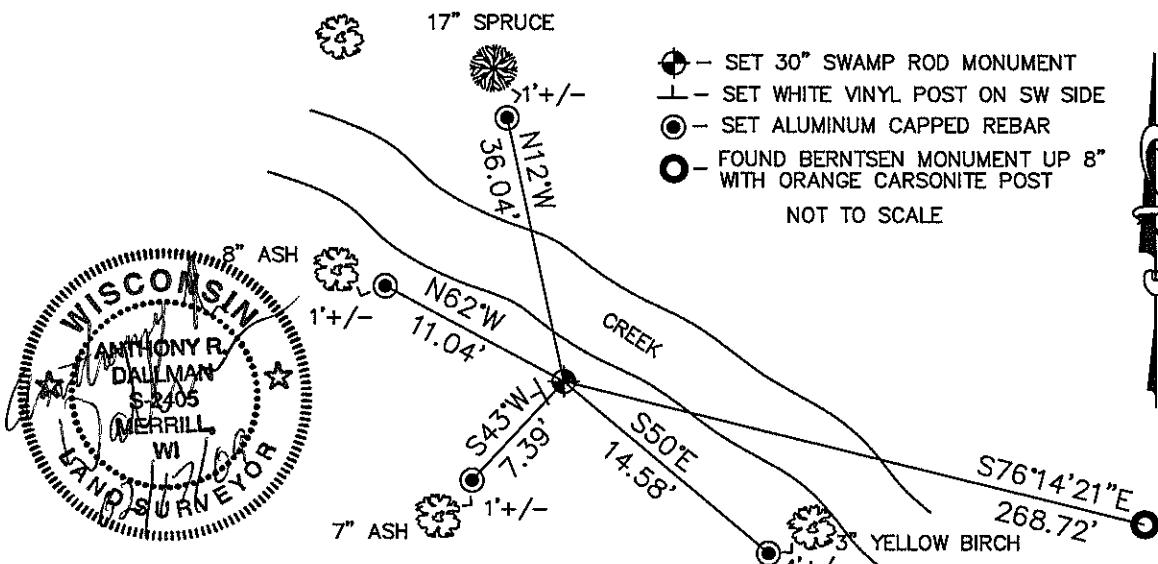
(b) (f) (g) (h) Description of monument found at this corner and if it was accepted, state all evidence (material, testimonial, occupational, plats, records, other monuments) used as a basis for accepting. If not accepted or if nothing was found, state evidence used as basis for establishing location. If reestablished through lost corner proportionate methods, indicate all monuments, distances and directions used to establish.

1862 - William E. Daugherty set Quarter Section post Birch 15 N15°E 20  
Elm 15 N62°W 20

1999 - Robert K. Fergot set a Berntsen monument by single proportionate measurement from the SW corner of Section 34 and the NW corner of Section 22.

2008 - I found Fergot's corner, and set a new monument based on the new locations of the NW and SW corners of Section 22. I set a 30" Swamp Rod 1' +/- from West edge of creek, equal distance between the NW corner of Section 22 and the SW corner of Section 22, while still holding the original creek call in Daugherty's notes from 1862. The creek is 12' +/- wide in December and runs S62°E at corner location.

(c) (d) (e) Plan view of corner with ties to at least 4 witness monuments. If in disagreement with previously established corner, show the distance between the two corners and also indicate the ties to the disputed corner.



(i) I, Anthony R. Dallman

(type or print name) certify that the corner location on this record was determined by me or under my direction and control and that this U.S. Public Land Survey Monument Record is correct and complete to the best of my knowledge and belief.

Anthony R. Dallman  
Signature

02/17/09  
Date

Index No. 0-13

# U.S. PUBLIC LAND SURVEY MONUMENT RECORD

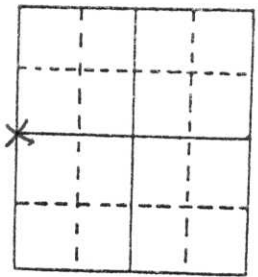
Note: This form is intended and designed to fulfill all requirements of Wisconsin Administrative Code, Chapter A-E 5.02, U.S. Public Land Survey Monument Record (3) (a) (b) (c) (d) (e) (f) (g) (h) (i). An additional sheet may be added if necessary to conform with said requirements.

(a) Corner location: Township 33 North

Range 4 East

Town/City/Village CORNING

County LINCOLN



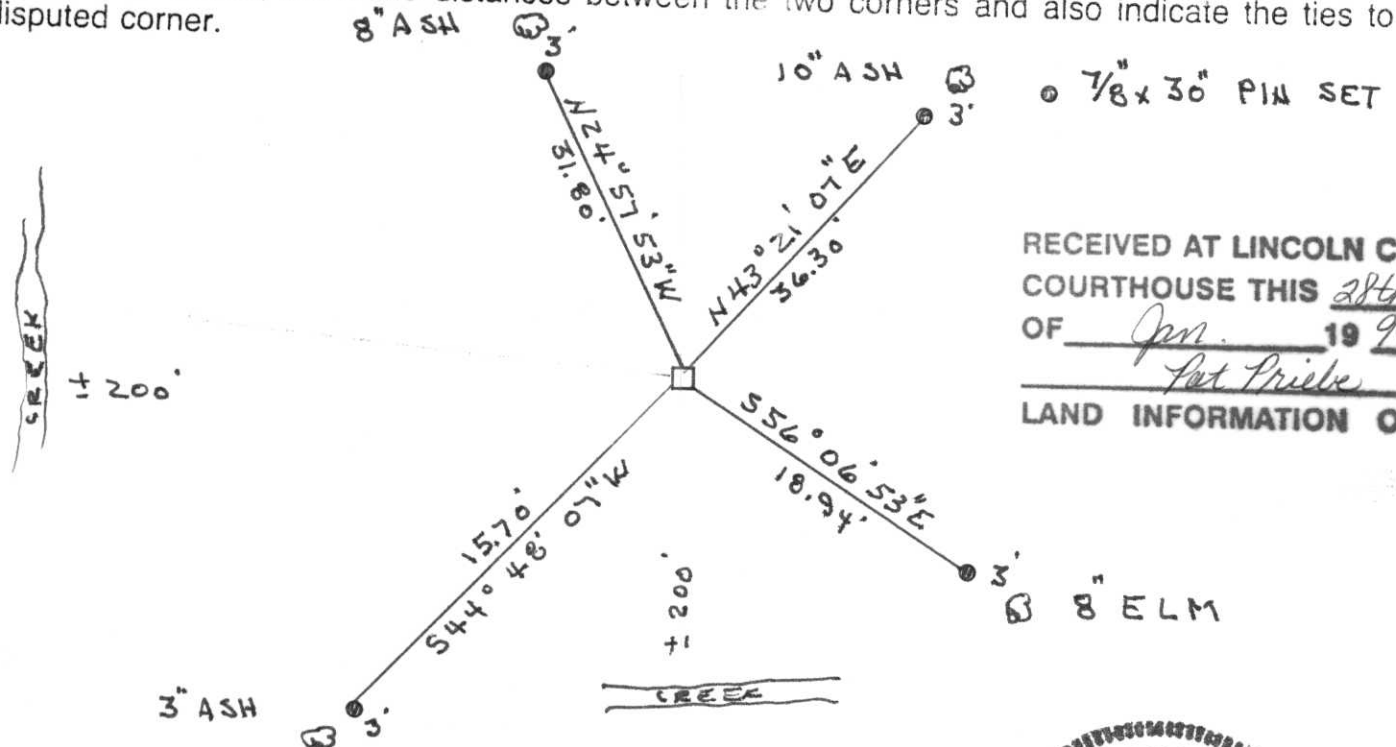
Section 22

(b) (f) (g) (h) Description of monument found at this corner and if it was accepted, state all evidence (material, testimonial, occupational, plats, records, other monuments) used as a basis for accepting. If not accepted or if nothing was found, state evidence used as basis for establishing location. If reestablished through lost corner proportionate methods, indicate all monuments, distances and directions used to establish.

After a thorough search for evidence of this corner and finding nothing I established corner location by single proportionate Measurement from the SW Corner of Section 34 to the NW Corner of Section 22.

I set a Berntson Monument at said location and made ties as shown.

(c) (d) (e) Plan view of corner with ties to at least 4 witness monuments. If in disagreement with previously established corner, show the distances between the two corners and also indicate the ties to the disputed corner.



RECEIVED AT LINCOLN COUNTY  
COURTHOUSE THIS 28th DAY  
OF Jan. 19 99  
Pat Prieb  
LAND INFORMATION OFFICE

(i) I, Robert K. Fergot  
(type or print name) certify that the corner location on this record was determined by me or under my direction and control and that this U.S. Public Land Survey Monument Record is correct and complete to the best of my knowledge and belief.

Robert K. Fergot  
Signature

1-28-99  
Date



Index No. 0-13



PLEASE  
DO NOT  
DISTURB  
HARRY







PLEASE DO NOT DISTURB

**SURVEY**







