

LINCOLN COUNTY U.S. PUBLIC LAND TIE SHEET RECORD

SECTION 20
TOWNSHIP 33N
RANGE 4 E

203346

LANDMARK

CORNING

OFFY, VILLAGE, TOWN

NO.

CORNER INDENTITY: 1.5" IRON PIPE

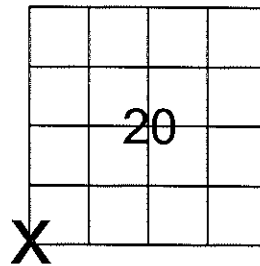
LINCOLN COUNTY COORDINATE: N: 175270.891

E: 305471.953

DATE OF SURVEY: July 9, 2008

SURVEY PARTY: Eron

FOUND
SET
RE-SET
RE-TIED



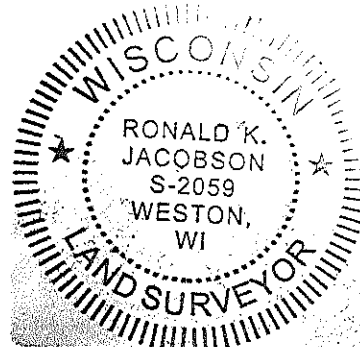
SECTION

Description of monument found at this corner and if was accepted, state all evidence (material, testimonial, occupational, plats, records, other monuments) used as a basis for accepting. If not accepted or if nothing was found, state evidence used as basis for establishing location. If reestablished through lost corner proportionate methods, indicate all monuments, distances and directions used to establish.

BASIS FOR MONUMENT LOCATION:

(DESCRIBE METHOD OF SURVEY AND CORNER AUTHENTICATION)

Found 1.5" Iron Pipe and Wood Post at corner. Property evidence, Tag Tree with blaze and comparison to the original notes supports the 1.5" Iron Pipe and Wood Post as corner.



CWE, Inc.

5707 SCHOFIELD AVE.
WESTON, WISCONSIN
54476

PHONE: (715) 359-9400
FAX: (715) 355-4199

general@cwengineers.com
www.cwengineers.com

CERTIFIED CORRECT:

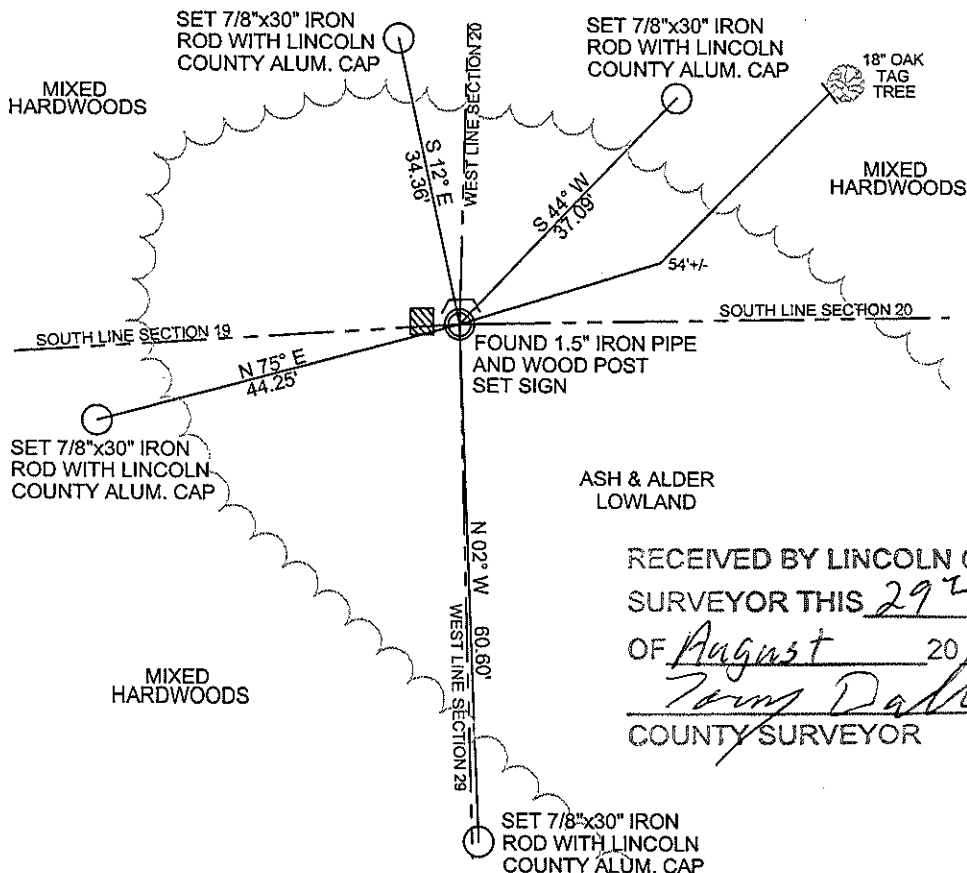
Ronald Jacobson RLS 2059-008

Registered Land Surveyor

DATE: July 25, 2008

TIE SKETCH:

SHOW MINIMUM OF FOUR (4) HORIZONTAL TIE DISTANCES TO FIXED WITNESS MONUMENTS.
DESCRIBE ALL MONUMENTS FOUND OR SET. ALL DISTANCES SHOWN IN US SURVEY FEET.



COORDINATES ARE REFERENCED TO LINCOLN COUNTY COORDINATE SYSTEM AS DEVELOPED BY THE WI. DEPARTMENT OF TRANSPORTATION AND ARE BASED ON GPS OBSERVATIONS TO CONTROL POINTS AS SUPPLIED BY LINCOLN COUNTY.

RECEIVED BY LINCOLN COUNTY
SURVEYOR THIS 29th DAY
OF August 20, 08
Tom Darr
COUNTY SURVEYOR

NOT TO SCALE
BEARINGS REFERENCED
TO MAGNETIC NORTH

Q-5

Picture 3 – Looking South From Corner



Picture 4 – Looking West From Corner



Picture 5 –Found 1.5 Iron Pipe with Wood Post at Corner



Picture 6 –Found Bottom of Wood Post at Corner



Picture 7 –Found Bearing-Tag Tree facing Corner

