

# LINCOLN COUNTY U.S. PUBLIC LAND TIE SHEET RECORD

SECTION 17  
TOWNSHIP 33N  
RANGE 4 E

173344  
NO.

LANDMARK

**CORNING**  
CITY, VILLAGE, TOWN

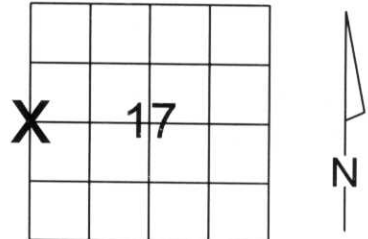
CORNER INDENTITY: FOUND 1.5" IRON PIPE

LINCOLN COUNTY COORDINATE: N: 183058.188

E: 305827.422

DATE OF SURVEY: June 23, 2008  
SURVEY PARTY: Eron

FOUND   
SET   
RE-SET   
RE-TIED



SECTION

Description of monument found at this corner and if was accepted, state all evidence (material, testimonial, occupational, plats, records, other monuments) used as a basis for accepting. If not accepted or if nothing was found, state evidence used as basis for establishing location. If reestablished through lost corner proportionate methods, indicate all monuments, distances and directions used to establish.

## BASIS FOR MONUMENT LOCATION:

(DESCRIBE METHOD OF SURVEY AND CORNER AUTHENTICATION)  
Found 1.5" iron pipe at corner. Property evidence, comparison to the original notes and review of Owens Illinois notes dated August 14, 1961 support the 1.5" Iron Pipe as the Corner.



CERTIFIED CORRECT:

*Ronald Jacobson*  
Ronald Jacobson RLS 2059-008  
Registered Land Surveyor

DATE: June 27, 2008



**CWE, Inc.**

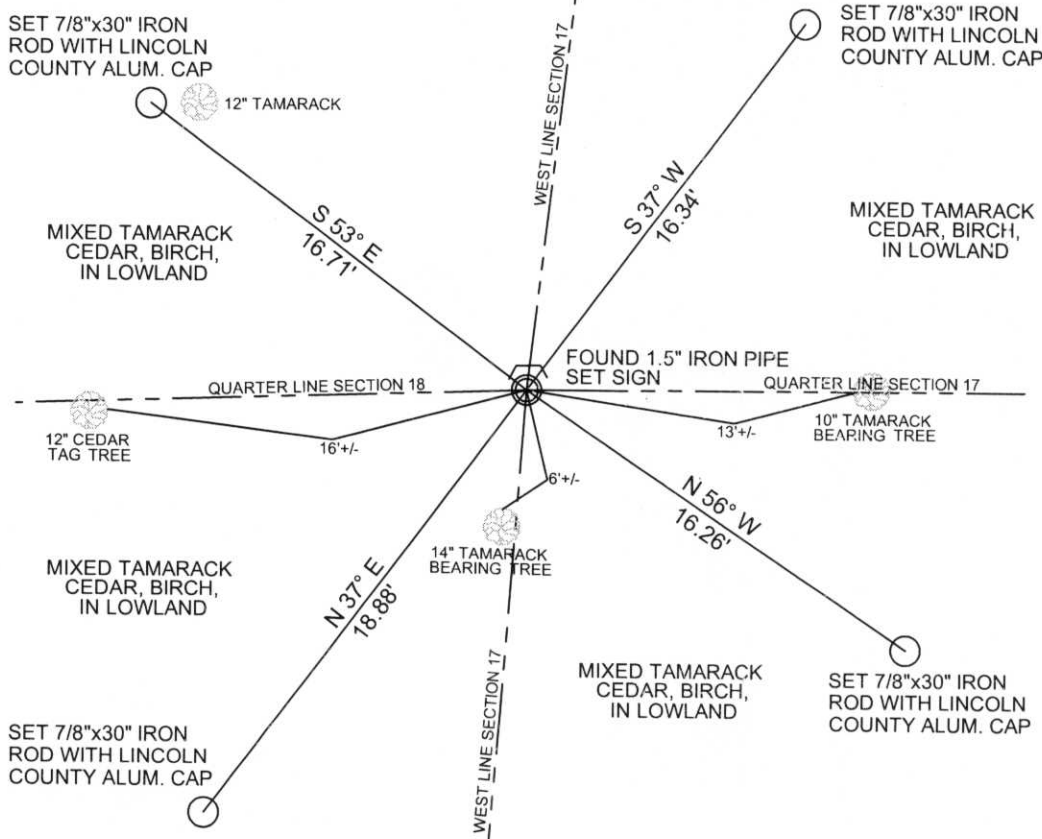
5707 SCHOFIELD AVE.  
WESTON, WISCONSIN  
54476

PHONE: (715) 359-9400  
FAX: (715) 355-4199

general@cwengineers.com  
www.cwengineers.com

## TIE SKETCH:

SHOW MINIMUM OF FOUR (4) HORIZONTAL TIE DISTANCES TO FIXED WITNESS MONUMENTS.  
DESCRIBE ALL MONUMENTS FOUND OR SET. ALL DISTANCES SHOWN IN US SURVEY FEET.



RECEIVED BY LINCOLN COUNTY  
SURVEYOR THIS 27<sup>TH</sup> DAY  
OF June 20 08  
*Tom Dalko*  
COUNTY SURVEYOR

COORDINATES ARE REFERENCED TO LINCOLN COUNTY COORDINATE SYSTEM AS DEVELOPED BY THE WI. DEPARTMENT OF TRANSPORTATION AND ARE BASED ON GPS OBSERVATIONS TO CONTROL POINTS AS SUPPLIED BY LINCOLN COUNTY.

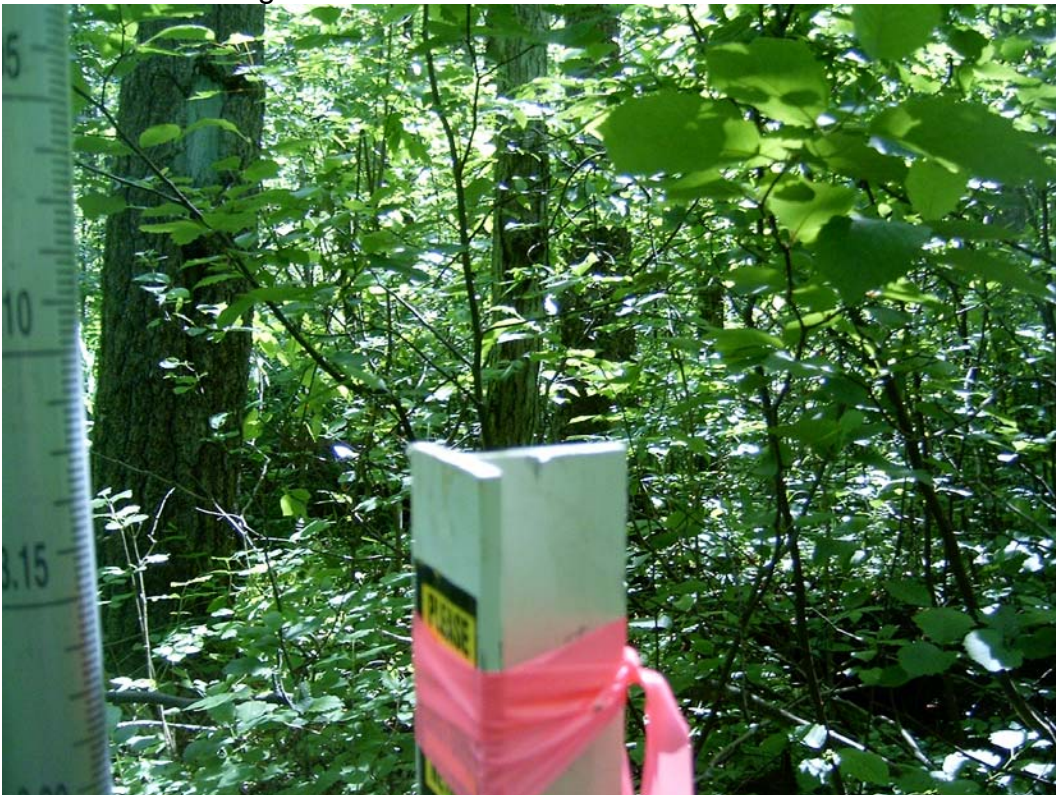
NOT TO SCALE  
BEARINGS REFERENCED TO MAGNETIC NORTH

K-5

Picture 1 – Looking North From Corner



Picture 2 – Looking East From Corner



Picture 3 – Looking South From Corner



Picture 4 – Looking West From Corner



Picture 5 –Found 1.5 Iron Pipe at Corner

