

LINCOLN COUNTY U.S. PUBLIC LAND TIE SHEET RECORD

SECTION 19
TOWNSHIP 33N
RANGE 4E

193343

CORNING

CITY, VILLAGE, TOWN

NO.

LANDMARK

CORNER INDENTITY: FOUND 1.5" IRON PIPE

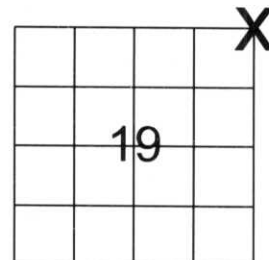
LINCOLN COUNTY COORDINATE: N: 180477.755

E: 305625.904

DATE OF SURVEY: June 17, 2008

SURVEY PARTY: Eron

FOUND
SET
RE-SET
RE-TIED



SECTION

Description of monument found at this corner and if was accepted, state all evidence (material, testimonial, occupational, plats, records, other monuments) used as a basis for accepting. If not accepted or if nothing was found, state evidence used as basis for establishing location. If reestablished through lost corner proportionate methods, indicate all monuments, distances and directions used to establish.

BASIS FOR MONUMENT LOCATION:

(DESCRIBE METHOD OF SURVEY AND CORNER AUTHENTICATION)

Found 1.5" iron pipe at corner. Property evidence, comparison to the original notes and review of Owens Illinois notes dated May 14, 1974 support the 1.5" Iron Pipe as the Corner.



CERTIFIED CORRECT:

Ronald Jacobson

Ronald Jacobson RLS 2059-008

Registered Land Surveyor

DATE: June 27, 2008



CWE, Inc.

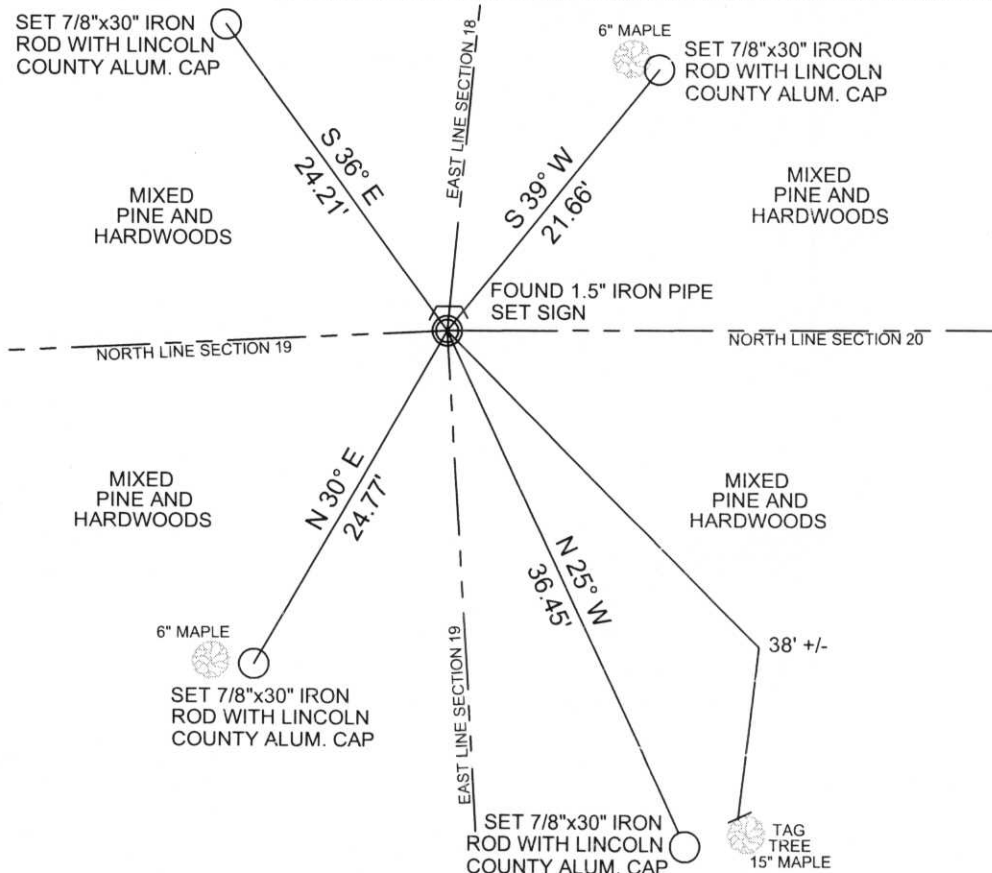
5707 SCHOFIELD AVE.
WESTON, WISCONSIN
54476

PHONE: (715) 359-9400
FAX: (715) 355-4199

general@cwengineers.com
www.cwengineers.com

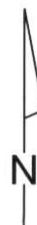
TIE SKETCH:

SHOW MINIMUM OF FOUR (4) HORIZONTAL TIE DISTANCES TO FIXED WITNESS MONUMENTS. DESCRIBE ALL MONUMENTS FOUND OR SET. ALL DISTANCES SHOWN IN US SURVEY FEET.



RECEIVED BY LINCOLN COUNTY
SURVEYOR THIS 27TH DAY
OF June 20 08
Roy Wahl
COUNTY SURVEYOR

COORDINATES ARE REFERENCED TO LINCOLN COUNTY COORDINATE SYSTEM AS DEVELOPED BY THE WI. DEPARTMENT OF TRANSPORTATION AND ARE BASED ON GPS OBSERVATIONS TO CONTROL POINTS AS SUPPLIED BY LINCOLN COUNTY.



NOT TO SCALE
BEARINGS REFERENCED
TO MAGNETIC NORTH

M.S.

Picture 1 – Looking North From Corner



Picture 2 – Looking East From Corner



Picture 3 – Looking South From Corner



Picture 4 – Looking West From Corner



Picture 5 –Found 1.5 Iron Pipe at Corner

