

LINCOLN COUNTY U.S. PUBLIC LAND TIE SHEET RECORD

SECTION 16
TOWNSHIP 33N
RANGE 4 E

163344
NO.

LANDMARK

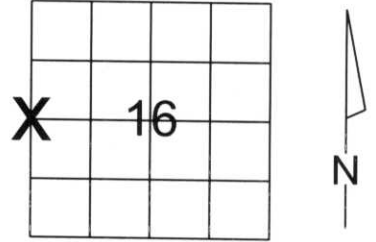
CORNING
CITY, VILLAGE, TOWN

CORNER INDENTITY: FOUND 1.0" IRON PIPE

LINCOLN COUNTY COORDINATE: N: 183074.457
E: 311063.266

DATE OF SURVEY: June 23, 2008
SURVEY PARTY: Eron

FOUND
SET
RE-SET
RE-TIED



SECTION

Description of monument found at this corner and if was accepted, state all evidence (material, testimonial, occupational, plats, records, other monuments) used as a basis for accepting. If not accepted or if nothing was found, state evidence used as basis for establishing location. If reestablished through lost corner proportionate methods, indicate all monuments, distances and directions used to establish.

BASIS FOR MONUMENT LOCATION:

(DESCRIBE METHOD OF SURVEY AND CORNER AUTHENTICATION)
Found 1.0" Iron Pipe and Wood Post at Corner. Property evidence, comparison to the original notes and review of Owens Illinois notes dated August 14, 1961 support the 1.0" Iron Pipe and Wood Post as the Corner.



CERTIFIED CORRECT:

Ronald Jacobson

Ronald Jacobson RLS 2059-008

Registered Land Surveyor

DATE: June 27, 2008



CWE, Inc.

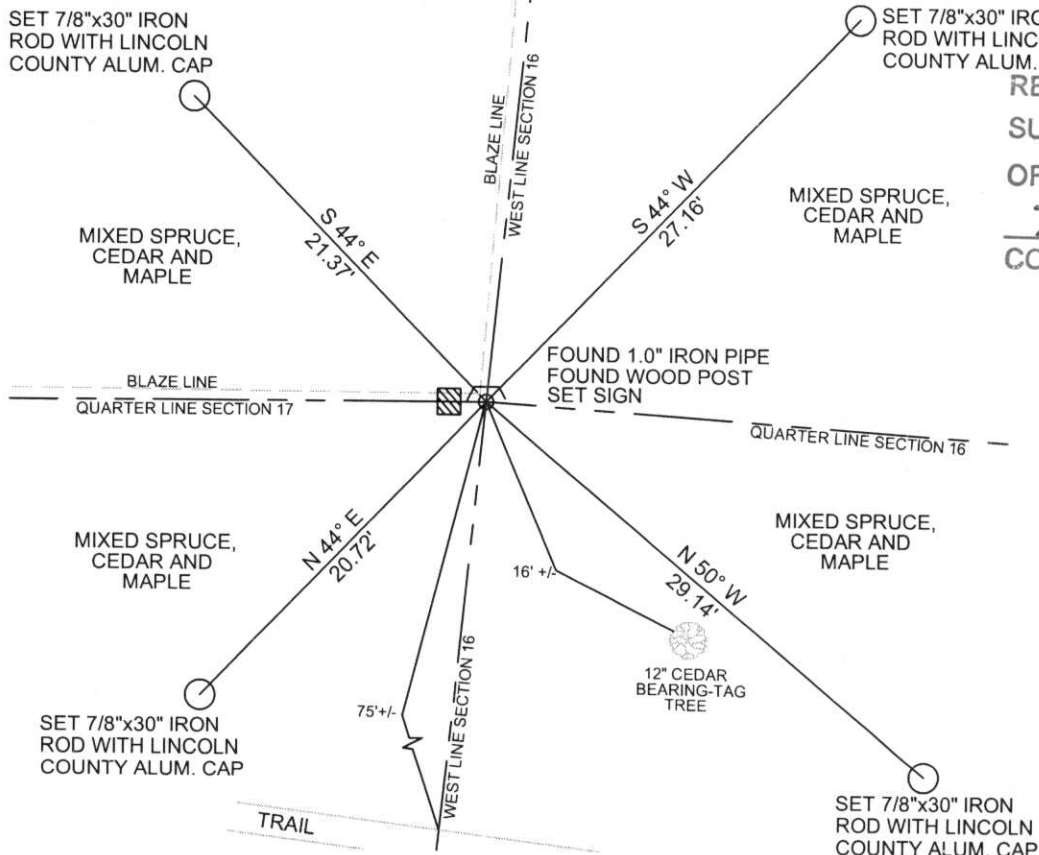
5707 SCHOFIELD AVE.
WESTON, WISCONSIN
54476

PHONE: (715) 359-9400
FAX: (715) 355-4199

general@cwengineers.com
www.cwengineers.com

TIE SKETCH:

SHOW MINIMUM OF FOUR (4) HORIZONTAL TIE DISTANCES TO FIXED WITNESS MONUMENTS.
DESCRIBE ALL MONUMENTS FOUND OR SET. ALL DISTANCES SHOWN IN US SURVEY FEET.



RECEIVED BY LINCOLN COUNTY
SURVEYOR THIS 27TH DAY
OF June 2008
Tommy Dall
COUNTY SURVEYOR

COORDINATES ARE REFERENCED TO LINCOLN COUNTY COORDINATE SYSTEM AS DEVELOPED BY THE WI. DEPARTMENT OF TRANSPORTATION AND ARE BASED ON GPS OBSERVATIONS TO CONTROL POINTS AS SUPPLIED BY LINCOLN COUNTY.

NOT TO SCALE
BEARINGS REFERENCED TO MAGNETIC NORTH

K-9

Picture 1 – Looking North From Corner



Picture 2 – Looking East From Corner



Picture 3 – Looking South From Corner at Tag Tree



Picture 4 – Looking West From Corner at Blaze Line



Picture 5 –Found 1.0 Iron Pipe and Wood Post at Corner

