

U.S. PUBLIC LAND SURVEY MONUMENT RECORD

Note: This form is intended and designed to fulfill all requirements of Wisconsin Administrative Code, Chapter A-E 7.08, U.S. Public Land Survey Monument Record (3) (a) (b) (c) (d) (e) (f) (g) (h) (i). An additional sheet may be added if necessary to conform with said requirements.

(a) Corner location: Township 33 North
 Range 4 East
 Town/~~City/Village~~ Corning
 County Lincoln



(b) (f) (g) (h) Description of monument found at this corner and if it was accepted, state all evidence (material, testimonial, occupational, plats, records, other monuments) used as a basis for accepting. If not accepted or if nothing was found, state evidence used as basis for establishing location. If reestablished through lost corner proportionate methods, indicate all monuments, distances and directions used to establish.

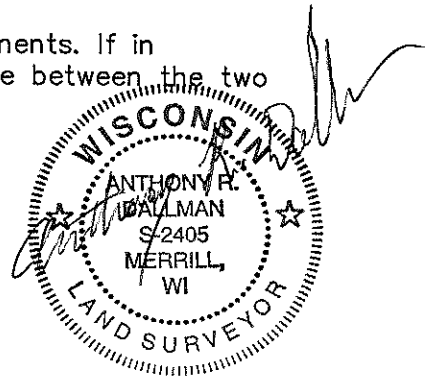
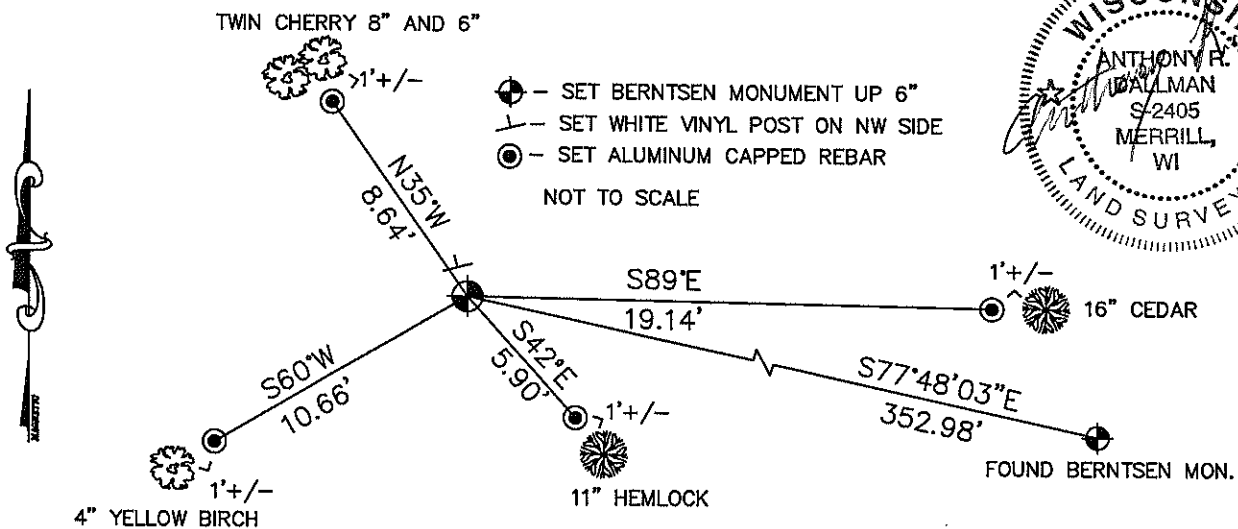
1862 - William E. Daugherty set post common to Sections 15,16,21,22 Birch 16 N73°E 14 Hemlock 8 S60°W 23

1960's - Frederick Trask, landowner for NE-NE Section 21, set a wood post by scaling off a USGS quad map.

1999 - Robert Fergot found a 6 inch squared wood post and replaced it with a Berntsen monument.

2008 - I recieved parol evidence from property owner that set the wood post referenced in Robert Fergot's tie sheet for this corner. I found the wood post was placed by an improper method of scaling off a USGS quad map. The location was not agreed upon by adjoining land owners. Therefore, I established the corner common to Sections 21,22,15, and 16 by double proportionate measure using the Southeast corner of Section 9 and the Southeast corner of Section 33 for the North-South controlling monuments, and using the Northeast corner of Section 20 and the Northeast corner of Section 22 for the East-West controlling monuments. Ties are shown below.

(c) (d) (e) Plan view of corner with ties to at least 4 witness monuments. If in disagreement with previously established corner, show the distance between the two corners and also indicate the ties to the disputed corner.



(i) I, Anthony R. Dallman
 (type or print name) certify that the corner location on this record was determined by me or under my direction and control and that this U.S. Public Land Survey Monument Record is correct and complete to the best of my knowledge and belief.

Anthony R. Dallman Signature 02/02/09 Date

Index No. _____

U.S. PUBLIC LAND SURVEY MONUMENT RECORD

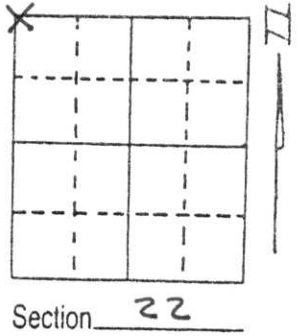
Note: This form is intended and designed to fulfill all requirements of Wisconsin Administrative Code, Chapter A-E 5.02, U.S. Public Land Survey Monument Record (3) (a) (b) (c) (d) (e) (f) (g) (h) (i). An additional sheet may be added if necessary to conform with said requirements.

(a) Corner location: Township 33 North

Range 4 East

Town/City/Village CORNING

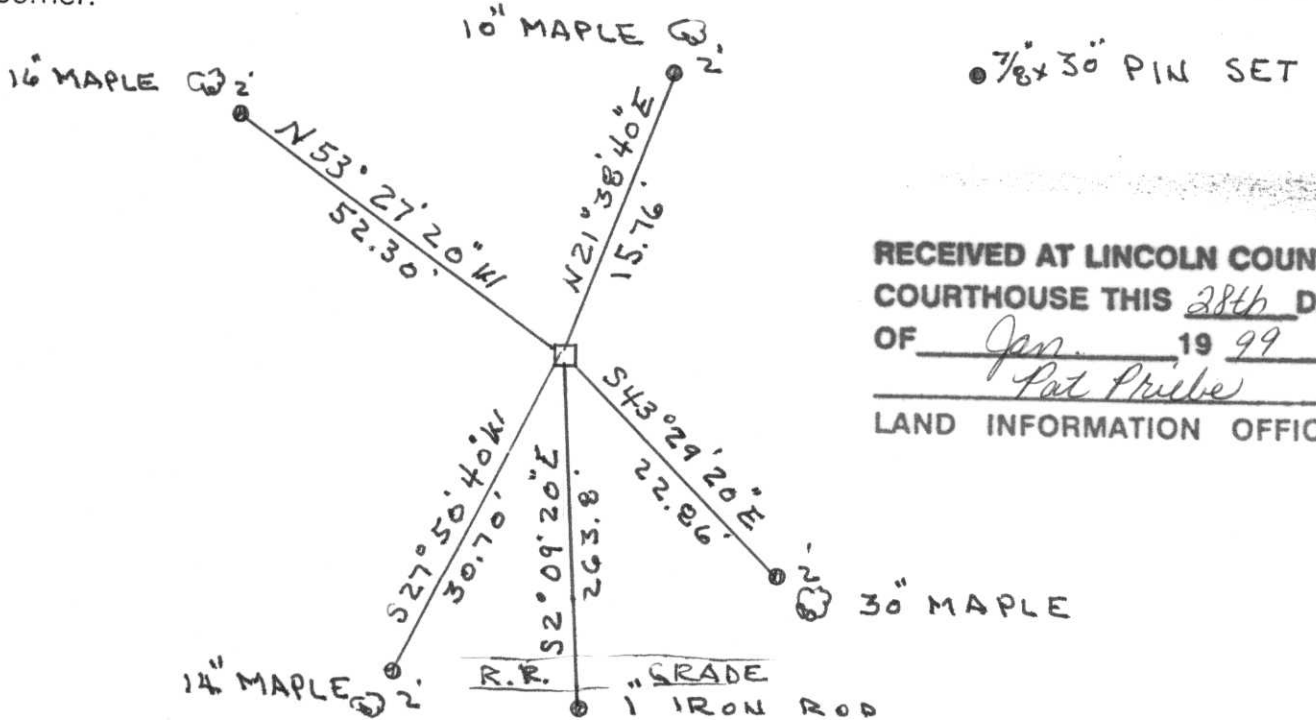
County LINCOLN



(b) (f) (g) (h) Description of monument found at this corner and if it was accepted, state all evidence (material, testimonial, occupational, plats, records, other monuments) used as a basis for accepting. If not accepted or if nothing was found, state evidence used as basis for establishing location. If reestablished through lost corner proportionate methods, indicate all monuments, distances and directions used to establish.

From September 1992 thru November 1994 I ran a series of traverses connecting found monuments on the west line of Section 23, the NW Corner of Section 22, and the SW Corner of Section 34. I reasoned that a 6 inch square post at this location was acceptable as the corner common to sections 22, 21, 15 and 16. I replaced said post with Berntson Monument and made ties as shown. Origin of post not known.

(c) (d) (e) Plan view of corner with ties to at least 4 witness monuments. If in disagreement with previously established corner, show the distances between the two corners and also indicate the ties to the disputed corner.



RECEIVED AT LINCOLN COUNTY
COURTHOUSE THIS 28th DAY
OF Jan. 19 99
Pat Pribe
LAND INFORMATION OFFICE

(i) I, Robert K. Fergot
(type or print name) certify that the corner location on this record was determined by me or under my direction and control and that this U.S. Public Land Survey Monument Record is correct and complete to the best of my knowledge and belief.

Robert K. Fergot 1-28-99
Signature Date



Index No. M-13





PLEASE
BE CAREFUL
BEARING
SURVEY MARKER











