

LINCOLN COUNTY U.S. PUBLIC LAND TIE SHEET RECORD

SECTION 14
TOWNSHIP 33N
RANGE 4 E

14344
NO.

CORNING
CITY, VILLAGE, TOWN

LANDMARK

CORNER IDENTIFY: BERNSTEN MONUMENT

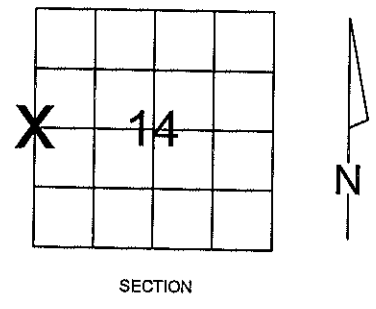
LINCOLN COUNTY COORDINATE: N: 182785.399

E: 321969.519

DATE OF SURVEY: October 23, 2008

SURVEY PARTY: Eron

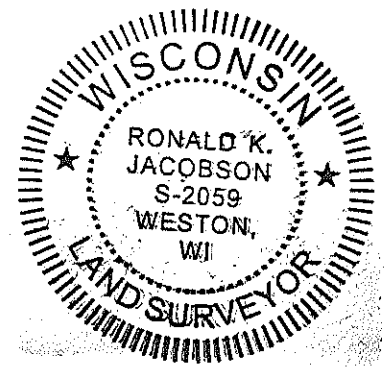
- FOUND
- SET
- RE-SET
- RE-TIED



Description of monument found at this corner and if was accepted, state all evidence (material, testimonial, occupational, plats, records, other monuments) used as a basis for accepting. If not accepted or if nothing was found, state evidence used as basis for establishing location. If reestablished through lost corner proportionate methods, indicate all monuments, distances and directions used to establish.

BASIS FOR MONUMENT LOCATION:

(DESCRIBE METHOD OF SURVEY AND CORNER AUTHENTICATION)
Set Lincoln County Bernsten Monument at Corner. No other evidence was found at corner. Bernsten Monument was set using single proportion measurement method.



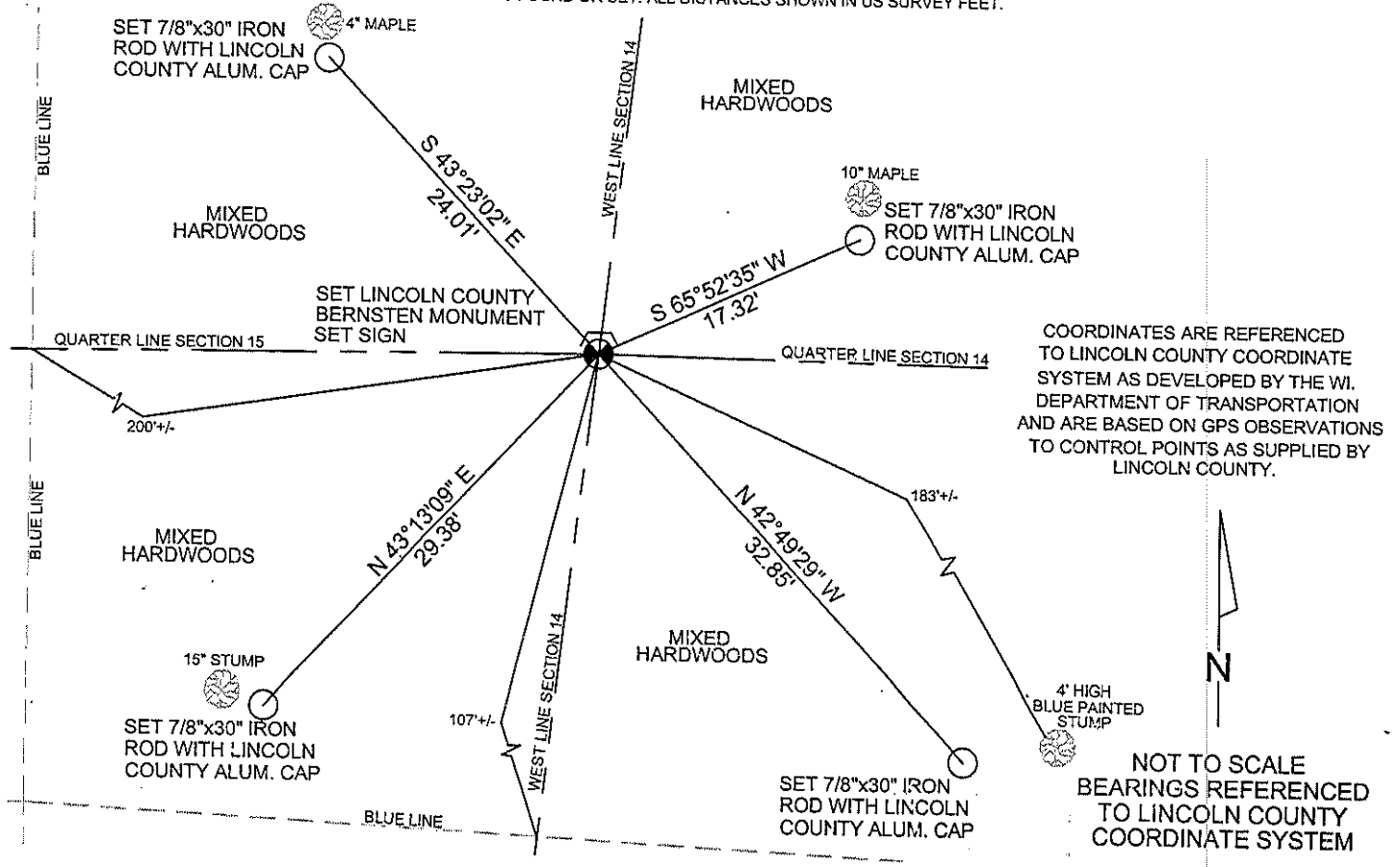
CWE, Inc.
5707 SCHOFIELD AVE.
WESTON, WISCONSIN
54476
PHONE: (715) 359-9400
FAX: (715) 355-4199
general@cwengineers.com
www.cwengineers.com

RECEIVED BY LINCOLN COUNTY
SURVEYOR THIS 24TH DAY
OF October 2008
Zony Duff
COUNTY SURVEYOR

CERTIFIED CORRECT:
[Signature]
Ronald Jacobson RLS 2059-008
Registered Land Surveyor
DATE: October 24, 2008

TIE SKETCH:

SHOW MINIMUM OF FOUR (4) HORIZONTAL TIE DISTANCES TO FIXED WITNESS MONUMENTS.
DESCRIBE ALL MONUMENTS FOUND OR SET. ALL DISTANCES SHOWN IN US SURVEY FEET.



COORDINATES ARE REFERENCED TO LINCOLN COUNTY COORDINATE SYSTEM AS DEVELOPED BY THE WI. DEPARTMENT OF TRANSPORTATION AND ARE BASED ON GPS OBSERVATIONS TO CONTROL POINTS AS SUPPLIED BY LINCOLN COUNTY.

NOT TO SCALE
BEARINGS REFERENCED TO LINCOLN COUNTY COORDINATE SYSTEM

K-17

Picture 1 – Looking North From Corner



Picture 2 – Looking East From Corner



Picture 3 – Looking South From Corner



Picture 4 – Looking West From Corner



Picture 5 –Set Bernsten Monument and Sign at Corner

