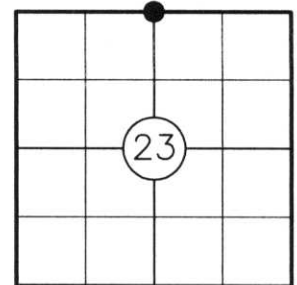


U.S. PUBLIC LAND SURVEY MONUMENT RECORD

NOTE: THIS FORM IS INTENDED AND DESIGNED TO FULFILL ALL REQUIREMENTS OF WISCONSIN ADMINISTRATIVE CODE CHAPTER A-E 7.08 U.S. PUBLIC LAND SURVEY MONUMENT RECORD (3) (a)(b)(c)(d)(e)(f)(g)(h)(i). AN ADDITIONAL SHEET MAY BE ADDED IF NECESSARY TO CONFIRM WITH SAID REQUIREMENTS.

(a) CORNER LOCATION:

N1/4 CORNER OF SECTION 23
 TOWNSHIP 33 NORTH
 RANGE 4 EAST
 TOWN OF CORNING
 COUNTY OF LINCOLN



(b) HISTORY OF ORIGINAL CORNER:

ORIGINAL SURVEYOR: WILLIAM E. DAUGHERTY
 DATE OF SURVEY: COMMENCED: MAY 11, 1862
 COMPLETED: MAY 18, 1862

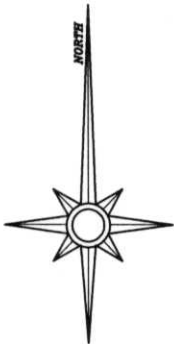
ORIGINAL BEARING TREES: 10" SPRUCE - N31°E, 19 LKS.
 8" SPRUCE - S48°W, 23 LKS.

(f)(g)(h) DESCRIPTION OF MONUMENT FOUND AT THIS CORNER AND IF IT WAS ACCEPTED STATE ALL EVIDENCE (MATERIAL, TESTIMONIAL, OCCUPATIONAL, PLATS, RECORDS, OTHER MONUMENTS) USED AS A BASIS FOR ESTABLISHING LOCATION. IF REESTABLISHING THROUGH LOST CORNER PROPORTIONATE METHODS, INDICATE ALL MONUMENTS, DISTANCES, AND DIRECTIONS USED TO ESTABLISH. INDICATE TYPE OF MONUMENT AND SIGN POST FOUND OR SET.

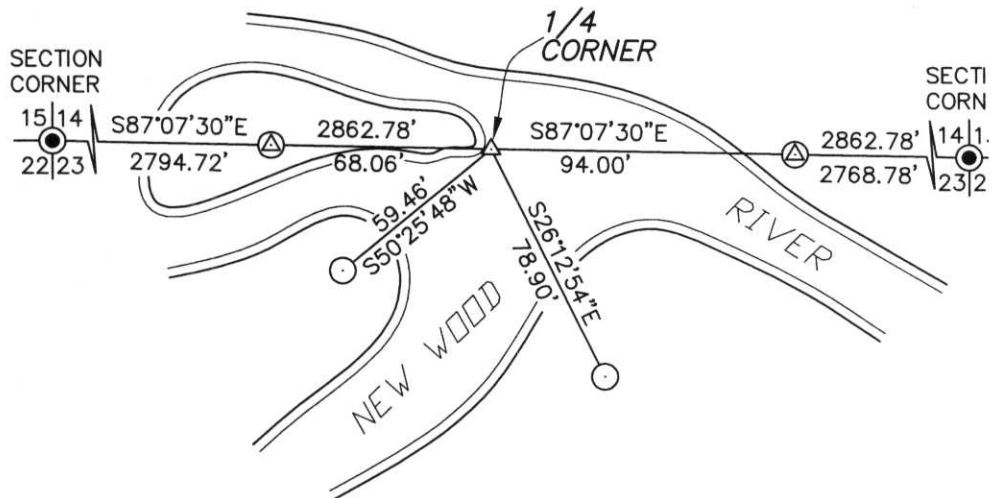
02/23/1961: JOSEPH KIRBY OF GENISOT ENGINEERING SHOWS THE CORNER POSITION AT THE MIDPOINT BETWEEN OPPOSING SECTION CORNERS, BUT DOES NOT NOTE ANY MONUMENTATION AT THE CORNER POSITION ON HIS SURVEY MAP FOR ANTHONY KURTZWEL.

03/10/2005: I FOUND NO EVIDENCE OF THE CORNER AS THE SINGLE PROPORTIONED POSITION FALLS IN THE NEW WOOD RIVER. I ESTABLISHED THE ACCESSORIES TO THE SINGLE PROPORTIONED POSITION AS SHOWN BELOW. I SET A PLASTIC SIGN POST 1' SOUTH OF EACH WITNESS CORNER ON THE SECTION LINE.

(c)(d)(e) PLAN VIEW OF CORNER WITH TIES TO AT LEAST FOUR WITNESSES. IF IN DISAGREEMENT WITH PREVIOUSLY ESTABLISHED CORNER, SHOW THE DISTANCES BETWEEN THE TWO CORNERS AND ALSO INDICATE THE TIE TO THE DISPUTED CORNER.



NOT TO SCALE



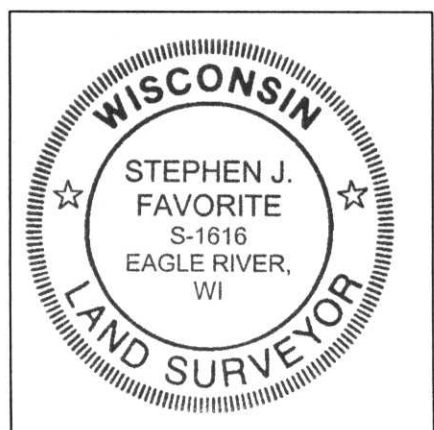
LEGEND

- ⊙ SET 7/8" X 60" ALUMINUM CAPPED REBAR
- SET 7/8" X 30" ALUMINUM CAPPED REBAR

RECEIVED BY LINCOLN COUNTY SURVEYOR THIS 4TH DAY OF April 20 05
Tom Dahl
 COUNTY SURVEYOR

I STEPHEN J. FAVORITE, REGISTERED LAND SURVEYOR NO. 1616, HEREBY CERTIFY THAT THE CORNER LOCATION ON THIS RECORD WAS REFERENCED BY ME OR UNDER MY DIRECTION AND CONTROL AND THAT THIS U.S. PUBLIC LAND SURVEY MONUMENT RECORD IS COMPLETE TO THE BEST OF MY KNOWLEDGE AND BELIEF.

Stephen J. Favorite 03/31/05
 SIGNATURE DATE



INDEX NO. M-19



