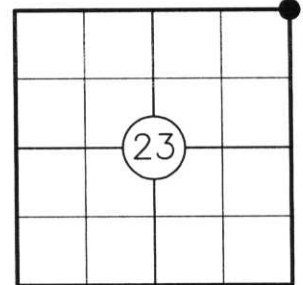


U.S. PUBLIC LAND SURVEY MONUMENT RECORD

NOTE: THIS FORM IS INTENDED AND DESIGNED TO FULFILL ALL REQUIREMENTS OF WISCONSIN ADMINISTRATIVE CODE CHAPTER A-E 7.08 U.S. PUBLIC LAND SURVEY MONUMENT RECORD (3) (a)(b)(c)(d)(e)(f)(g)(h)(i). AN ADDITIONAL SHEET MAY BE ADDED IF NECESSARY TO CONFIRM WITH SAID REQUIREMENTS.

(a) CORNER LOCATION:

NE CORNER OF SECTION 23
TOWNSHIP 33 NORTH
RANGE 4 EAST
TOWN OF CORNING
COUNTY OF LINCOLN



(b) HISTORY OF ORIGINAL CORNER:

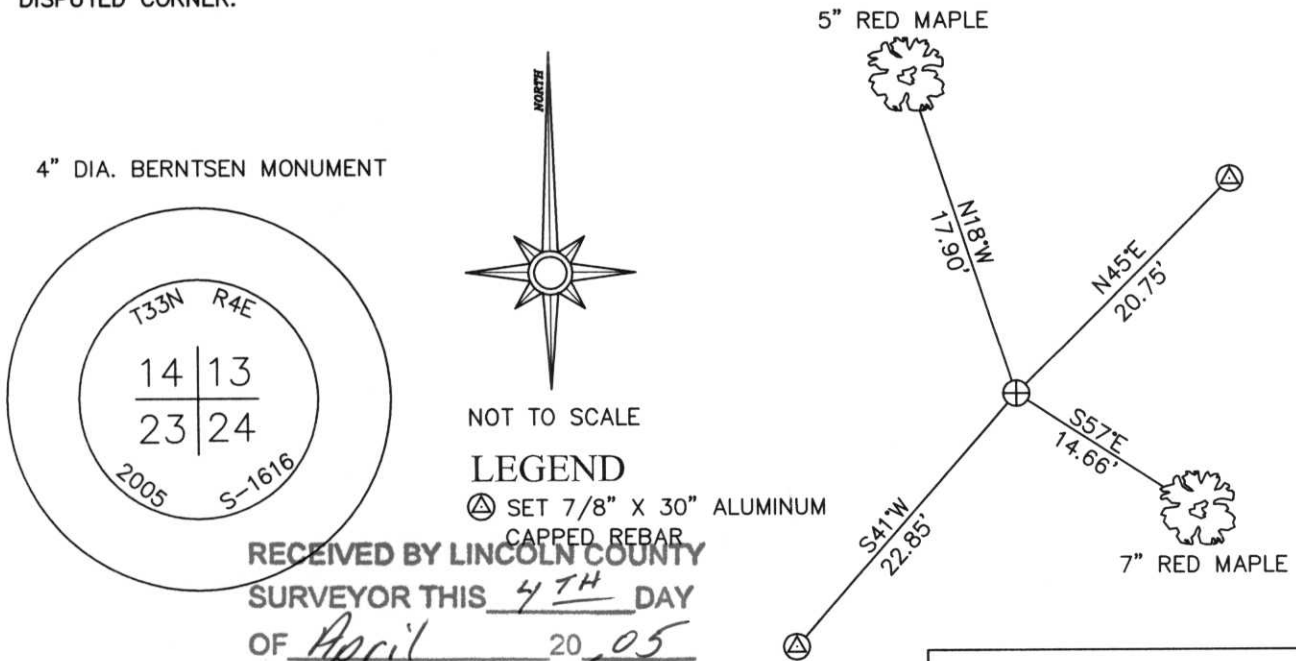
ORIGINAL SURVEYOR: WILLIAM E. DAUGHERTY
DATE OF SURVEY: COMMENCED: MAY 11, 1862
COMPLETED: MAY 18, 1862

ORIGINAL BEARING TREES: 12" SUGAR MAPLE - N13°E, 9LKS.
16" HEMLOCK - S40°W, 13 LKS.

(f)(g)(h) DESCRIPTION OF MONUMENT FOUND AT THIS CORNER AND IF IT WAS ACCEPTED STATE ALL EVIDENCE (MATERIAL, TESTIMONIAL, OCCUPATIONAL, PLATS, RECORDS, OTHER MONUMENTS) USED AS A BASIS FOR ESTABLISHING LOCATION. IF REESTABLISHING THROUGH LOST CORNER PROPORTIONATE METHODS, INDICATE ALL MONUMENTS, DISTANCES, AND DIRECTIONS USED TO ESTABLISH. INDICATE TYPE OF MONUMENT AND SIGN POST FOUND OR SET.

- 02/23/1961: JOSEPH KIRBY OF GENISOT ENGINEERING SHOWS AN IRON PIPE WITH 2 BEARING TREES (6" ASPEN, S14°W, 4.7' AND 4" ASPEN N30°W, 8.4') ON MAP NO. 2723-4.
- 07/28/2004: DAVID J. GOSLIN SHOWS A 1" DIA. IRON PIPE AT THE THE SECTION CORNER LOCATION ON LINCOLN COUNTY CERTIFIED SURVEY MAP NO. 1797.
- 03/10/2005: I FOUND THE 1" DIA. IRON PIPE WITH A 1" DIA. IRON ROD NEXT TO THE PIPE AND REPLACED IT WITH A 4" DIA. BERNTSEN BREAKAWAY MONUMENT AND MADE NEW ACCESSORIES AS SHOWN BELOW. I SET A PLASTIC SIGN POST 1' EAST.

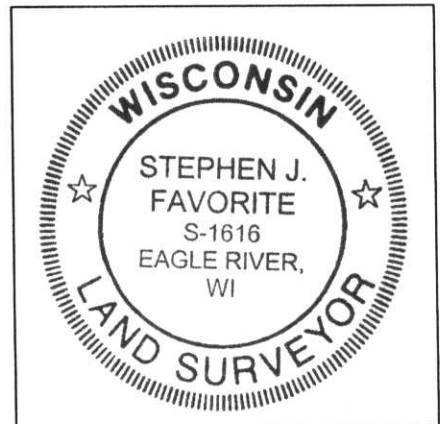
(c)(d)(e) PLAN VIEW OF CORNER WITH TIES TO AT LEAST FOUR WITNESSES. IF IN DISAGREEMENT WITH PREVIOUSLY ESTABLISHED CORNER, SHOW THE DISTANCES BETWEEN THE TWO CORNERS AND ALSO INDICATE THE TIE TO THE DISPUTED CORNER.



NOTE:
1) ALL DISTANCES TO BT'S ARE MEASURED TO NAIL ON SIDE OF TREE

I STEPHEN J. FAVORITE, REGISTERED LAND SURVEYOR NO. 1616, HEREBY CERTIFY THAT THE CORNER LOCATION ON THIS RECORD WAS REFERENCED BY ME OR UNDER MY DIRECTION AND CONTROL AND THAT THIS U.S. PUBLIC LAND SURVEY MONUMENT RECORD IS COMPLETE TO THE BEST OF MY KNOWLEDGE AND BELIEF.

Stephen J. Favorite 03/31/05
SIGNATURE DATE



INDEX NO. M-21



LINCOLN COUNTY

T35N R4E

14	13
23	24

2005

91616

SURVEY MARKER



