

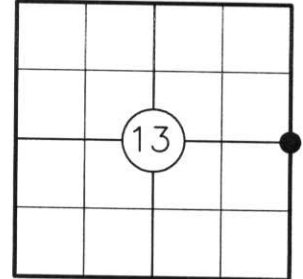
# U.S. PUBLIC LAND SURVEY MONUMENT RECORD

NOTE: THIS FORM IS INTENDED AND DESIGNED TO FULFILL ALL REQUIREMENTS OF WISCONSIN ADMINISTRATIVE CODE CHAPTER A-E 7.08 U.S. PUBLIC LAND SURVEY MONUMENT RECORD (3) (a)(b)(c)(d)(e)(f)(g)(h)(i). AN ADDITIONAL SHEET MAY BE ADDED IF NECESSARY TO CONFIRM WITH SAID REQUIREMENTS.

**(a) CORNER LOCATION:**

E 1/4 CORNER OF SECTION 13  
TOWNSHIP 33 NORTH  
RANGE 4 EAST  
TOWN OF CORNING  
COUNTY OF LINCOLN

RECEIVED BY LINCOLN COUNTY  
SURVEYOR THIS 14<sup>TH</sup> DAY  
OF December 20 04  
Tony Dahl  
COUNTY SURVEYOR



**(b) HISTORY OF ORIGINAL CORNER:**

ORIGINAL SURVEYOR: J.M. MARSH  
DATE OF SURVEY: COMMENCED: JULY, 1851  
COMPLETED: AUGUST, 1851

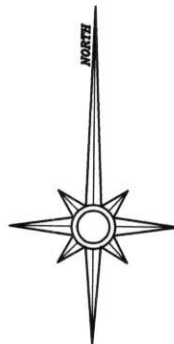
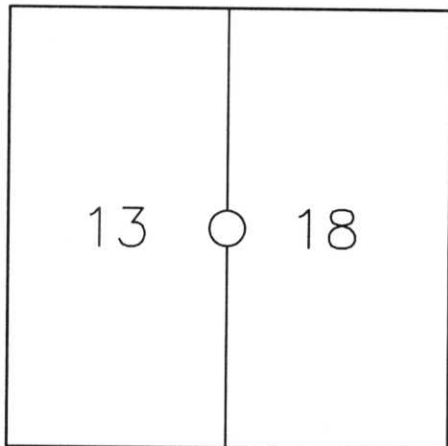
ORIGINAL BEARING TREES: 8" HEMLOCK - S18°E, 35 LKS.  
12" HEMLOCK - S08°W, 28 LKS  
8" HEMLOCK - N34°W, 19 LKS  
11" HEMLOCK - N69°E, 14 LKS

**(f)(g)(h) DESCRIPTION OF MONUMENT FOUND AT THIS CORNER AND IF IT WAS ACCEPTED STATE ALL EVIDENCE (MATERIAL, TESTIMONIAL, OCCUPATIONAL, PLATS, RECORDS, OTHER MONUMENTS) USED AS A BASIS FOR ESTABLISHING LOCATION. IF REESTABLISHING THROUGH LOST CORNER PROPORTIONATE METHODS, INDICATE ALL MONUMENTS, DISTANCES, AND DIRECTIONS USED TO ESTABLISH. INDICATE TYPE OF MONUMENT AND SIGN POST FOUND OR SET.**

2004: FOUND AND ACCEPTED 6" X 6" GRANITE STONE MONUMENT IN PLACE 1-1/2' ABOVE GROUND AND LEANING OVER IN A MOUND OF STONE. NO BT'S FOUND. PLUMBED STONE MONUMENT, ESTABLISHED TWO BEARING TREES AND SET 2 LINCOLN COUNTY ALUMINUM CAPPED REBAR REFERENCE MONUMENTS AS SHOWN BELOW. SET CARSONITE POST 1' NORTH OF MONUMENT.

**(c)(d)(e) PLAN VIEW OF CORNER WITH TIES TO AT LEAST FOUR WITNESSES. IF IN DISAGREEMENT WITH PREVIOUSLY ESTABLISHED CORNER, SHOW THE DISTANCES BETWEEN THE TWO CORNERS AND ALSO INDICATE THE TIE TO THE DISPUTED CORNER.**

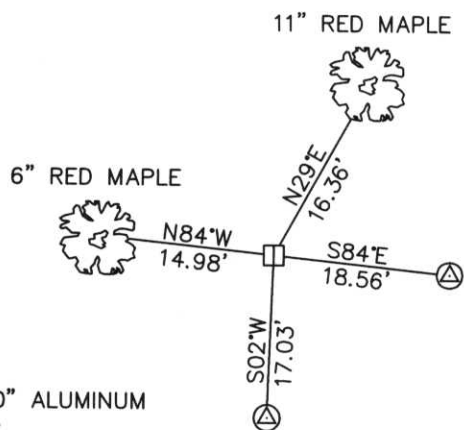
6" X 6" GRANITE STONE MONUMENT



NOT TO SCALE

**LEGEND**

⊙ SET 7/8" X 30" ALUMINUM CAPPED REBAR

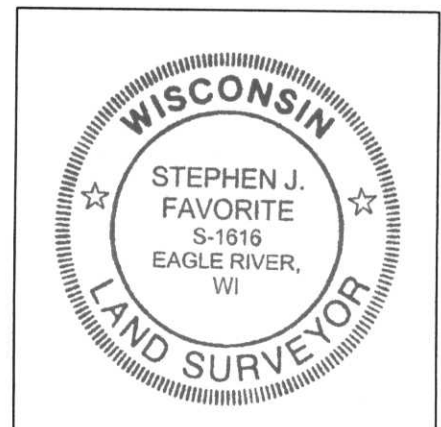


NOTE:  
1) ALL DISTANCES TO BT'S ARE MEASURED TO NAIL ON SIDE OF TREE

I STEPHEN J. FAVORITE, REGISTERED LAND SURVEYOR NO. 1616, HEREBY CERTIFY THAT THE CORNER LOCATION ON THIS RECORD WAS REFERENCED BY ME OR UNDER MY DIRECTION AND CONTROL AND THAT THIS U.S. PUBLIC LAND SURVEY MONUMENT RECORD IS COMPLETE TO THE BEST OF MY KNOWLEDGE AND BELIEF.

Stephen J. Favorite  
SIGNATURE

12-13-04  
DATE



INDEX NO.

4-25