

# U.S. PUBLIC LAND SURVEY MONUMENT RECORD

Note: This form is intended and designed to fulfill all requirements of Wisconsin Administrative Code, Chapter A-E 7.08, U.S. Public Land Survey Monument Record (3) (a) (b) (c) (d) (e) (f) (g) (h) (i). An additional sheet may be added if necessary to conform with said requirements.

(a) Corner location: Township 33 North  
 Range 4 East  
 Town/~~City/Village~~ Corning  
 County Lincoln



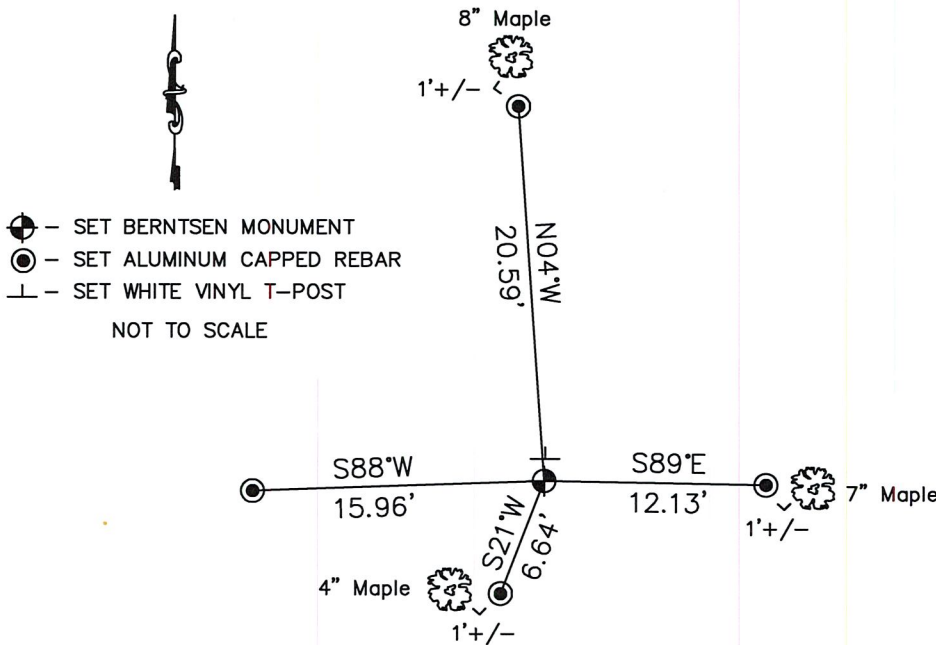
(b) (f) (g) (h) Description of monument found at this corner and if it was accepted, state all evidence (material, testimonial, occupational, plats, records, other monuments) used as a basis for accepting. If not accepted or if nothing was found, state evidence used as basis for establishing location. If reestablished through lost corner proportionate methods, indicate all monuments, distances and directions used to establish.

1862 – William E. Daugherty set quarter section post, Hemlock 20 N18°E 14 Links, Hemlock 16 S30°W 44 Links

1961 – Joseph Kirby, Genisot Engineers, calculated position on map numbered L376A in Lincoln County Survey Records.

2009 – Anthony Dallman set Berntsen Monument per said Genisot map L376A. Monument is set up 5" +/- Tied as shown below.

(c) (d) (e) Plan view of corner with ties to at least 4 witness monuments. If in disagreement with previously established corner, show the distance between the two corners and also indicate the ties to the disputed corner.



(i) I, Anthony R. Dallman  
 (type or print name) certify that the corner location on this record was determined by me under my direction and control and that this U.S. Public Land Survey Monument Record is correct and complete to the best of my knowledge and belief.

Anthony R. Dallman  
 Signature

5/14/18  
 Date

Index No. M-23