

U S PUBLIC LAND SURVEY MONUMENT RECORD

NOTE: This form is intended and designed to fulfill all requirements of Wisconsin Administrative Code, Chapter A-E 7.08 U.S. Public Land Survey Monument Record (3) (a-i)

A-E 7.08(3)(a) Identity of corner:
SOUTHEAST CORNER SECTION 13,
TOWNSHIP 33 NORTH,
RANGE 04 EAST OF THE 4TH PM,
TOWN OF CORNING,
COUNTY OF LINCOLN

WISCORS - LINCOLN COUNTY
N: 179,975.000 USft (179,976.577)
E: 333,114.067 USft (333,116.485)
Datum: NAD83 (2011)
GNSS Method RTK
Base from GNSS Control set WISCORS VRS



The coordinate value shown has been verified by the average of two or more GPS observations at a markedly different time. Coordinates shown in parenthesis are provided by Lincoln County.

A-E 7.08(3)(b)

Original Surveyor: James M. Marsh

Date of Original Survey Commenced: July 29, 1851
Completed: August 11, 1851

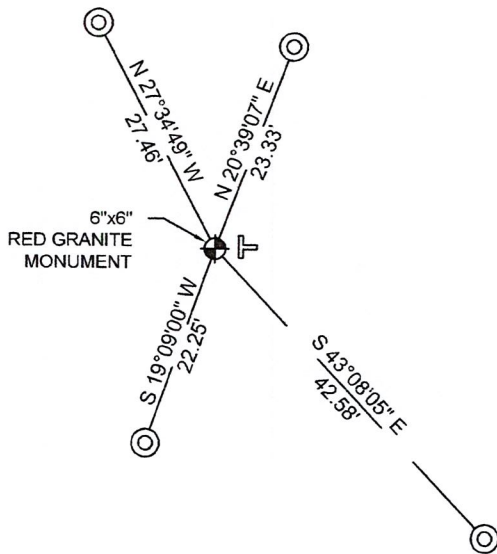
Original Accessories:
Hemlock 18 S 38° E 25 links
Birch 16 S 39° W 53 links
Hemlock XX N 67° W 35 links
Hemlock 36 N 50° E 13 links

1930's - 1940's - Surveyor Francis Fuchs (aka Francis Fox) was known to set granite stone monuments in this area.

May 4, 2011 - Surveyor 2754 - Jonathan W. Dulin - indicates this position as "calculated per coordinates given by Lincoln County Surveyor" on Lincoln County map S438A.

December 3, 2022 - While performing the 2022 Lincoln County PLSS Corner Remonumentation and GPS Services project, I found a 6"x 6" red granite stone near the computed position provided by Lincoln County. I established 4 new reference monuments as shown below.

A-E 7.08(3)(c)(d) Plan view of corner with references to at least 4 witness monuments.



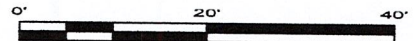
BEARINGS LISTED TO THE NEAREST SECOND ARE REFERENCED TO WISCONSIN COUNTY COORDINATE REFERENCE SYSTEM - LINCOLN COUNTY ZONE. ALL OTHER BEARINGS ARE MAGNETIC



RECEIVED BY LINCOLN COUNTY
SURVEYOR THIS 27TH DAY
OF December 20 22
Jonathan W. Dulin
COUNTY SURVEYOR

LEGEND

- 6" x 6" red granite monument, found
- 7/8" diameter X 30" long - iron rod with 2" diameter aluminum cap, set
- Vinyl T-post, set ±2 feet east of corner



A-E 7.08(3)(e) 1851 Surveyor set a post, 1930's - 1940's Surveyor set a granite stone monument, 2011 Surveyor had a calculated position. I found a 6" x 6" red granite stone.

A-E 7.08(3)(f) I accept this monument as a FOUND PERPETUATED LOCATION of the corner.

A-E 7.08(3)(g)(h) This corner was not determined through lost-corner-proportionate methods.

A-E 7.08(3)(i) I, Jeffrey L. DeMuth, Professional Land Surveyor No. S-2656, hereby certify that the corner location on this record was determined by the Lincoln County Surveyor, and the monuments found or set as shown hereon were measured by me or under my direction and control, and that this U.S. Public Land Survey Monument Record is correct and complete to the best of my knowledge, and belief.



SIGNATURE

Jeffrey L. DeMuth

December 14, 2022

DATE

17-25



4327 Cole Road, Crandon, WI 54520
James E. Anderson - 715.784.3485
Jeffrey L. DeMuth – 715.482.5237
Cardinal.north@outlook.com

REPORT

2022-Lincoln County PLSS Corner Remonumentation and GPS Services

Wisconsin Corner Point Identification Number: 43304130000

Surveyor: Jeffrey L. DeMuth – S2656

Corner monument: Found 6" x 6" red granite stone.

Field Book: Cardinal North – Lincoln Co. Remon. – 2022-00

Page: 74

Horizontal Datum: WisCRS – Lincoln County Zone – NAD83(2011)

Date / time of initial measurement:

December 3, 2022 - Start 14:54:04 CST – End 15:03:13 CST

Reference monuments:

4 – Set - 7/8" diameter X 30" long iron rods with 2" diameter Lincoln Co. aluminum cap.

Coordinate Table

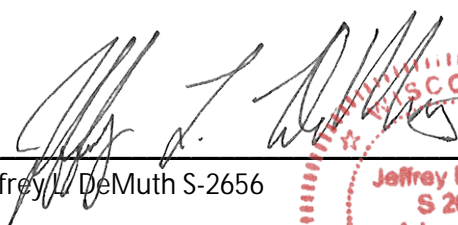
	County Provided	2022 Measurement	Difference
North	179976.577	179975.000	1.58
East	333116.485	333114.067	2.42

Observed coordinates do not match existing calculated coordinates. Reason - monument found.

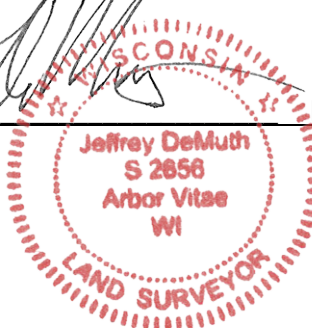
Request Data Log for more information.

Additional Notes:

Observed point using base station-Base from GNSS Control set from WISCORS VRS.


Jeffrey L. DeMuth S-2656

December 12, 2022
Date



43304130000_Mon-N



43304130000_North



43304130000_West



4330413000_South



43304130000_East

