

U S PUBLIC LAND SURVEY MONUMENT RECORD

NOTE: This form is intended and designed to fulfill all requirements of Wisconsin Administrative Code, Chapter A-E 7.08 U.S. Public Land Survey Monument Record (3) (a-i)

A-E 7.08(3)(a) Identity of corner:
 EAST 1/4 CORNER SECTION 12,
 TOWNSHIP 33 NORTH,
 RANGE 04 EAST OF THE 4TH PM,
 TOWN OF CORNING,
 COUNTY OF LINCOLN

WISCORS - LINCOLN COUNTY
 N: 187,931.083 USft (187,930.931)
 E: 333,205.439 USft (333,205.425)
 Datum: NAD83 (2011)
 GNSS Method RTK
 Base from GNSS Control set WISCORS VRS



The coordinate value shown has been verified by the average of two or more GPS observations at a markedly different time. Coordinates shown in parenthesis are provided by Lincoln County.

A-E 7.08(3)(b)

Original Surveyor: James M. Marsh

Date of Original Survey Commenced: July 29, 1851
 Completed: August 11, 1851

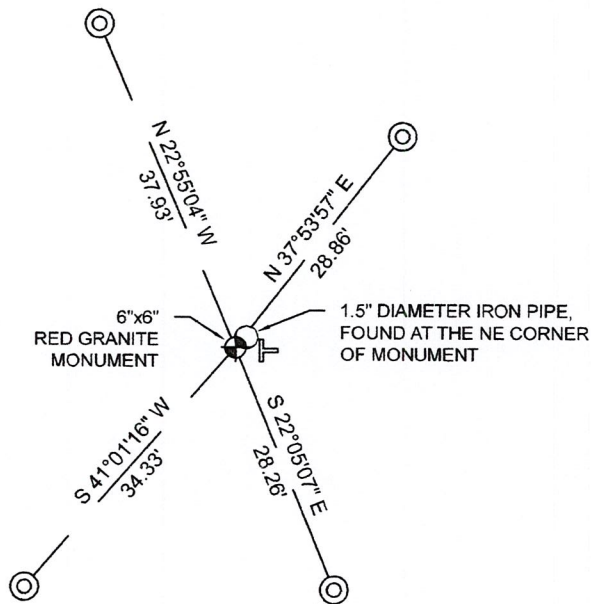
Original Accessories:
 Hemlock 11 S 13° E 28 links
 Hemlock 10 S 80° W XX links
 Sugar 20 N 70° W 33 links
 Hemlock 12 N 45° E 30 links

1930's -1940's - Surveyor Francis Fuchs (aka Francis Fox) was known to set granite stone monuments in this area.

October 24, 2008 - Surveyor 2059 - Ronald K. Jacobson - indicates this position as "found stone monument" on Lincoln County U.S. Public Land Section Summary - Section 12, Township 33 North, Range 4 East.

December 3, 2022 - While performing the 2022 Lincoln County PLSS Corner Remonumentation and GPS Services project, I found a 6"x 6" red granite stone near the computed position provided by Lincoln County. I established 4 new reference monuments as shown below.

A-E 7.08(3)(c)(d) Plan view of corner with references to at least 4 witness monuments.



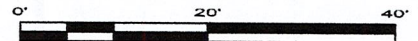
BEARINGS LISTED TO THE NEAREST SECOND ARE REFERENCED TO WISCONSIN COUNTY COORDINATE REFERENCE SYSTEM - LINCOLN COUNTY ZONE. ALL OTHER BEARINGS ARE MAGNETIC



RECEIVED BY LINCOLN COUNTY SURVEYOR THIS 27TH DAY OF December 20 22
Jeffrey DeMuth
 COUNTY SURVEYOR

LEGEND

- 6" x 6" red granite monument, found
- 7/8" diameter X 30" long - iron rod with 2" diameter aluminum cap, set
- Vinyl T-post, set ±3 feet east of corner



A-E 7.08(3)(e) 1851 Surveyor set a post, 1930's - 1940's Surveyor set a granite stone monument, 2008 Surveyor found a stone monument. I found a 6" x 6" red granite stone.

A-E 7.08(3)(f) I accept this monument as a FOUND PERPETUATED LOCATION of the corner.
 A-E 7.08(3)(g)(h) This corner was not determined through lost-corner-proportionate methods.

A-E 7.08(3)(i) I, Jeffrey L. DeMuth, Professional Land Surveyor No. S-2656, hereby certify that the corner location on this record was determined by the Lincoln County Surveyor, and the monuments found or set as shown hereon were measured by me or under my direction and control, and that this U.S. Public Land Survey Monument Record is correct and complete to the best of my knowledge, and belief.

SIGNATURE

December 14, 2022

DATE



G-25

REPORT

2022-Lincoln County PLSS Corner Remonumentation and GPS Services

Wisconsin Corner Point Identification Number: 43304122000

Surveyor: Jeffrey L. DeMuth – S2656

Corner monument: Found 6" x 6" red granite stone.

Field Book: Cardinal North – Lincoln Co. Remon. – 2022-00

Page: 74

Horizontal Datum: WisCRS – Lincoln County Zone – NAD83(2011)

Date / time of initial measurement:

December 3, 2022 - Start 13:28:50 CST – End 13:34:36 CST

Reference monuments:

4 – Set - 7/8" diameter X 30" long iron rods with 2" diameter Lincoln Co. aluminum cap.

1 – Found – 1.5" diameter iron pipe

Coordinate Table

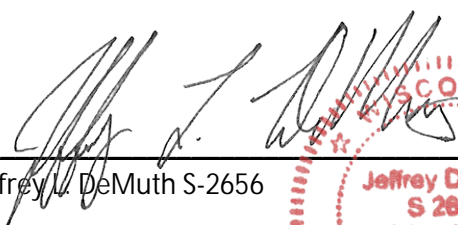
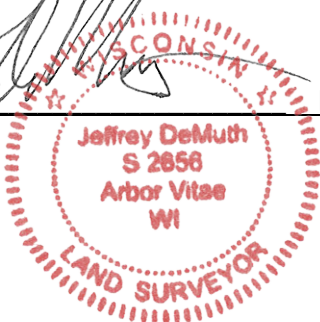
| | County Provided | 2022 Measurement | Difference |
|-------|-----------------|------------------|------------|
| North | 187930.931 | 187931.083 | -0.15 |
| East | 333205.425 | 333205.439 | -0.01 |

Observed coordinates match with existing coordinates within reason.

Request Data Log for more information.

Additional Notes:

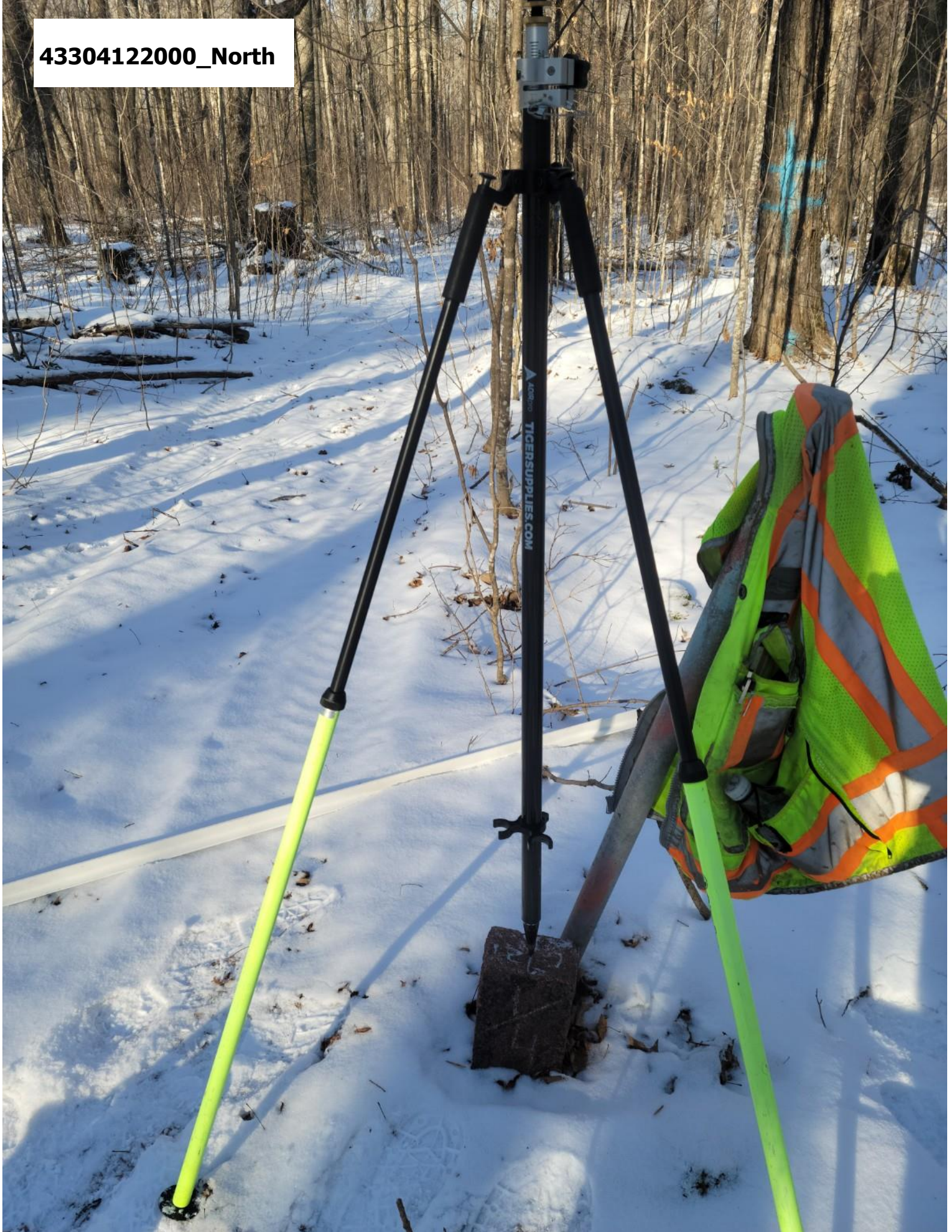
Observed point using base station-Base from GNSS Control set from WISCORS VRS.


 Jeffrey L. DeMuth S-2656
 
 December 12, 2022
 Date

43304122000_Mon-N



43304122000_North



43304122000_West



43304122000_South



43304122000_East

