

LINCOLN COUNTY U.S. PUBLIC LAND TIE SHEET RECORD

SECTION 11
TOWNSHIP 33N
RANGE 4 E

113347
NO.

LANDMARK

CORNING

CITY, VILLAGE, TOWN

CORNER INDENTITY: BERNSTEN MONUMENT

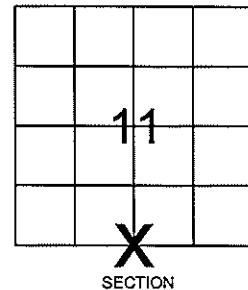
LINCOLN COUNTY COORDINATE: N: 185330.760

E: 324995.426

DATE OF SURVEY: October 10, 2008

SURVEY PARTY: Rutzen

FOUND
SET
RE-SET
RE-TIED

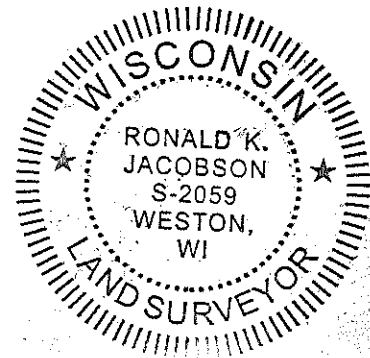


Description of monument found at this corner and if was accepted, state all evidence (material, testimonial, occupational, plats, records, other monuments) used as a basis for accepting. If not accepted or if nothing was found, state evidence used as basis for establishing location. If reestablished through lost corner proportionate methods, indicate all monuments, distances and directions used to establish.

BASIS FOR MONUMENT LOCATION:

(DESCRIBE METHOD OF SURVEY AND CORNER AUTHENTICATION)

No evidence of corner was found. Set Lincoln County Bernsten Monument at Corner. Bernsten Monument was set using single proportion measurement method.



CWE, Inc.

5707 SCHOFIELD AVE.
WESTON, WISCONSIN
54476

PHONE: (715) 359-9400
FAX: (715) 355-4199

general@cwengineers.com
www.cwengineers.com

CERTIFIED CORRECT:

[Signature]

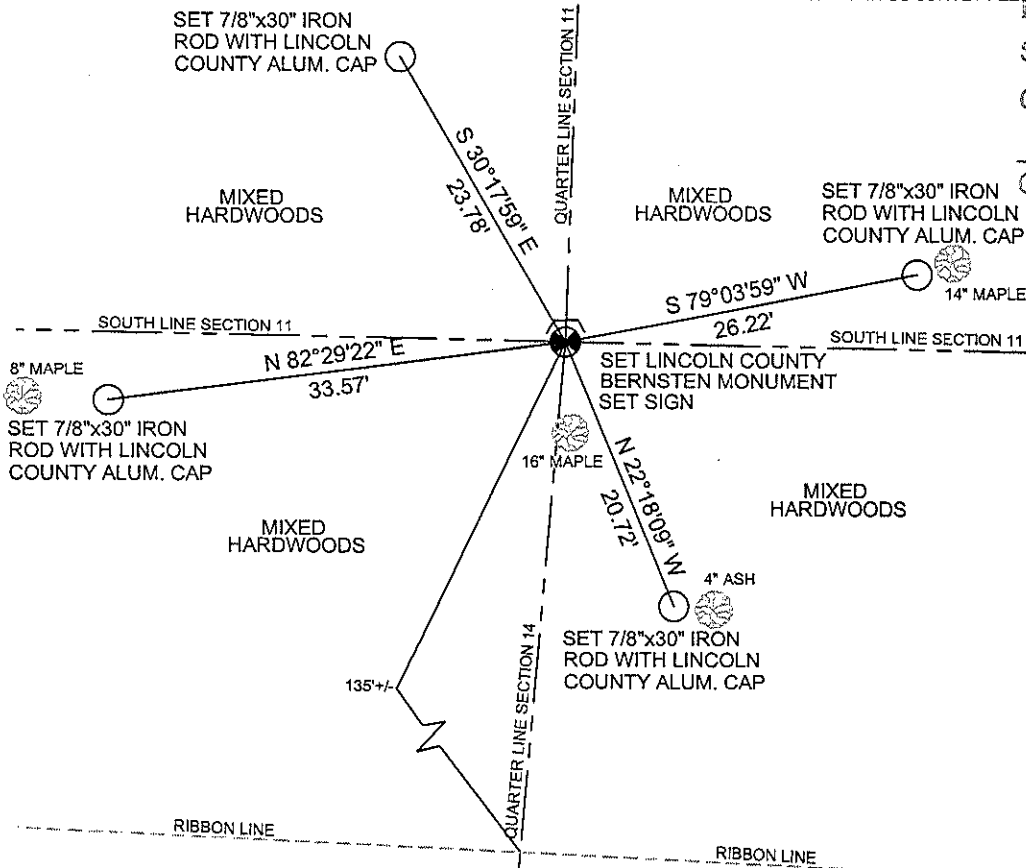
Ronald Jacobson RLS 2059-008

Registered Land Surveyor

DATE: October 17, 2008

TIE SKETCH:

SHOW MINIMUM OF FOUR (4) HORIZONTAL TIE DISTANCES TO FIXED WITNESS MONUMENTS.
DESCRIBE ALL MONUMENTS FOUND OR SET. ALL DISTANCES SHOWN IN US SURVEY FEET



RECEIVED BY LINCOLN COUNTY
SURVEYOR THIS 17th DAY
OF October 20 08
[Signature]
COUNTY SURVEYOR

COORDINATES ARE REFERENCED
TO LINCOLN COUNTY COORDINATE
SYSTEM AS DEVELOPED BY THE WI.
DEPARTMENT OF TRANSPORTATION
AND ARE BASED ON GPS OBSERVATIONS
TO CONTROL POINTS AS SUPPLIED BY
LINCOLN COUNTY.

NOT TO SCALE
BEARINGS REFERENCED
LINCOLN COUNTY
COORDINATE SYSTEM

61-1

Picture 3 – Looking South From Corner



Picture 4 – Looking West From Corner



Picture 5 –Set Bernsten Monument and Sign at Corner

