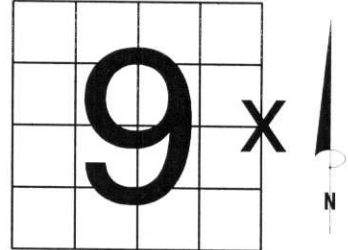


U.S. PUBLIC LAND SURVEY MONUMENT RECORD

NOTE: THIS FORM IS INTENDED AND DESIGNED TO FULFILL ALL REQUIREMENTS OF WISCONSIN ADMINISTRATIVE CODE, CHAPTER LAND SURVEY MONUMENT RECORD (3) (a) (b) (c) (d) (e) (f) (g) (h) (i). AN ADDITIONAL SHEET MAY BE ADDED IF NECESSARY TO CONFORM WITH SAID REQUIREMENTS. A-E 7.08 U.S. PUBLIC

(a) CORNER LOCATION: TOWNSHIP 33 NORTH
 RANGE 4 EAST/~~WEST~~
 TOWN/CITY/VILLAGE CORNING
 COUNTY LINCOLN

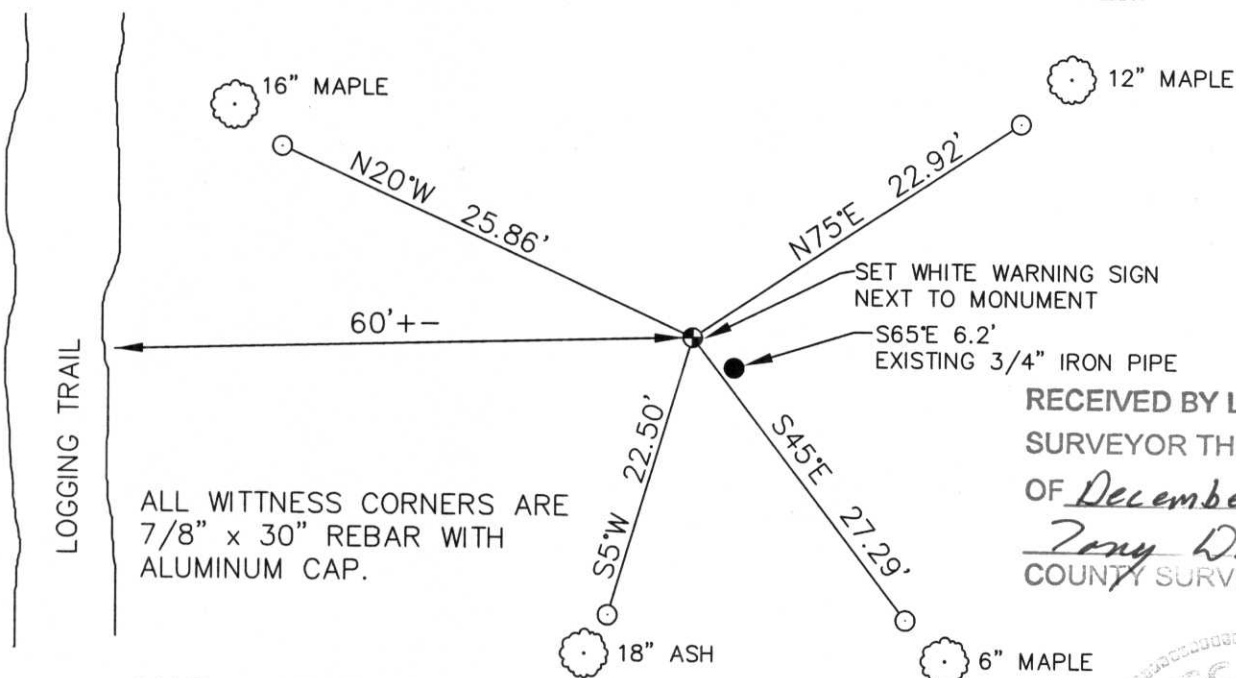


SECTION 9

(b) (f) (g) (h) DESCRIPTION OF MONUMENT FOUND AT THIS CORNER AND IF IT WAS ACCEPTED, STATE ALL EVIDENCE (MATERIAL, TESTIMONIAL, OCCUPATIONAL, PLATS, RECORDS, OTHER MONUMENTS) USED AS BASIS FOR ACCEPTING. IF NOT ACCEPTED OR IF NOTHING WAS FOUND, STATE EVIDENCE USED AS BASIS FOR ESTABLISHING LOCATION. IF REESTABLISHED THROUGH LOST CORNER PROPORTIONATE METHODS, INDICATE ALL MONUMENTS, DISTANCES AND DIRECTIONS USED TO ESTABLISH. INDICATE TYPE OF MONUMENT FOUND OR SET AND SIGN POST.

TALKED WITH LOCAL LAND OWNER, GLEN BECKMAN. HE SAID THAT HE HAD "MEASURED" AND SET AN IRON PIPE WHERE THIS CORNER SHOULD BE. HE SAID IT WAS APPROXIMATE. THERE WAS NO EVIDENCE, OTHER THAN HIS MEASUREMENTS TO SET THE PIPE BY. I HELD THE NORTHEAST AND SOUTHEAST CORNERS OF SECTION 9, SPLIT THE DISTANCE AND SET A LINCOLN COUNTY BERNTSEN MONUMENT ON LINE, FOR THIS CORNER. IT IS 6.2 FEET FROM BECKMAN'S 3/4" IRON PIPE. I LEFT BECKMANS PIPE. FOUND NO OTHER EVIDENCE FOR THIS CORNER. TIED OUT. LINE IS CUT TO THE NORTH AND PAINTED TO THE SOUTH.

(c) (d) (e) PLAN VIEW OF CORNER WITH TIES TO AT LEAST 4 WITNESS MONUMENTS. IF IN DISAGREEMENT WITH PREVIOUSLY ESTABLISHED CORNER, SHOW THE DISTANCES BETWEEN THE TWO CORNERS AND ALSO INDICATE THE TIES TO THE DISPUTED CORNER.



RECEIVED BY LINCOLN COUNTY SURVEYOR THIS 12TH DAY OF December, 2005
Tony Dalk
 COUNTY SURVEYOR

(i) I, DAVID L. OSTERBRINK RLS # S-2014
 (TYPE OR PRINT NAME) CERTIFY THAT THE CORNER LOCATION ON THIS RECORD WAS DETERMINED BY ME OR UNDER MY DIRECTION AND CONTROL AND THAT THIS U.S. PUBLIC LAND SURVEY MONUMENT RECORD IS CORRECT AND COMPLETE TO THE BEST OF MY KNOWLEDGE AND BELIEF

David L. Osterbrink
 SIGNATURE 12-8-05
 DATE



STAMP