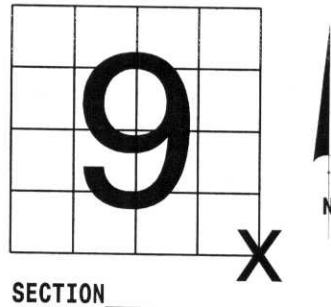


U.S. PUBLIC LAND SURVEY MONUMENT RECORD

NOTE: THIS FORM IS INTENDED AND DESIGNED TO FULFILL ALL REQUIREMENTS OF WISCONSIN ADMINISTRATIVE CODE, CHAPTER LAND SURVEY MONUMENT RECORD (3) (a) (b) (c) (d) (e) (f) (g) (h) (i). AN ADDITIONAL SHEET MAY BE ADDED IF NECESSARY TO CONFORM WITH SAID REQUIREMENTS. A-E 7.08 U.S. PUBLIC

(a) CORNER LOCATION: TOWNSHIP 33 NORTH
 RANGE 4 EAST ~~WEST~~
 TOWN/CITY/VILLAGE CORNING
 COUNTY LINCOLN

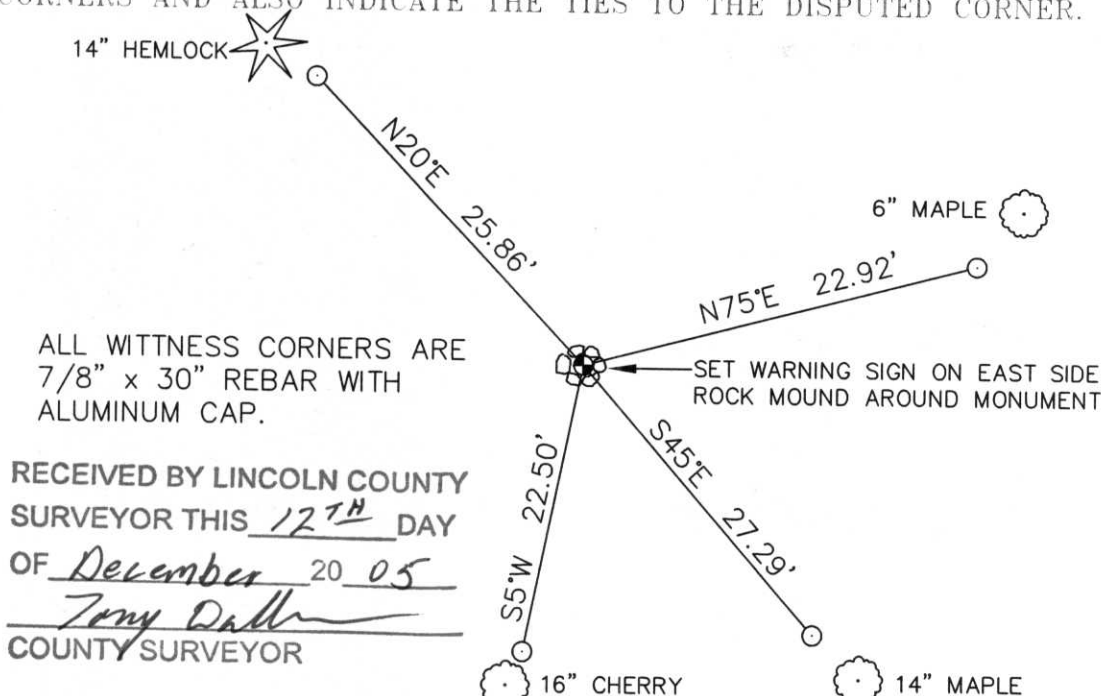


SECTION 9

(b) (f) (g) (h) DESCRIPTION OF MONUMENT FOUND AT THIS CORNER AND IF IT WAS ACCEPTED, STATE ALL EVIDENCE (MATERIAL, TESTIMONIAL, OCCUPATIONAL, PLATS, RECORDS, OTHER MONUMENTS) USED AS BASIS FOR ACCEPTING. IF NOT ACCEPTED OR IF NOTHING WAS FOUND, STATE EVIDENCE USED AS BASIS FOR ESTABLISHING LOCATION. IF REESTABLISHED THROUGH LOST CORNER PROPORTIONATE METHODS, INDICATE ALL MONUMENTS, DISTANCES AND DIRECTIONS USED TO ESTABLISH. INDICATE TYPE OF MONUMENT FOUND OR SET AND SIGN POST.

THIS CORNER IS SHOWN ON THE OWENS-ILLINOIS TIE SHEET, ON RECORD IN THE LINCOLN COUNTY SURVEYORS OFFICE. I DROVE TO THIS CORNER AND FOUND A 1-1/2" IRON PIPE. I FOUND THE 2 TIES SHOWN ON THE OWENS ILLINOIS TIE SHEET. THERE IS A MAP ON RECORD IN THE LINCOLN COUNTY SURVEYORS OFFICE, WITH TIES FOR "THIS CORNER". I DID NOT FIND THE CORNER AS SHOWN ON SAID MAP. LATER, I FOUND OUT THAT THE "CORNER" SET ON THAT MAP, IS 680.83' EAST OF MY / OWENS-ILLINOIS CORNER. I HELD THIS IRON PIPE AS THE SOUTHEAST CORNER OF SECTION 9. THIS IS THE CORNER THAT BECKMAN USED FOR SETTING HIS SOUTH EAST PROPERTY CORNER. (SEE TIE SHEET, E 1/4 CORNER 9-33-4)
 LINES ARE CUT TO THE WEST, NORTH, EAST AND SOUTH. REPLACED PIPE WITH LINCOLN COUNTY BERNTSEN MONUMENT. TIED OUT.
 THERE WAS A STONE MOUND AROUND PIPE. SQUARED OFF POST WITH SCRIBED SECTION NUMBERS, LAYING NEXT TO PIPE.

(c) (d) (e) PLAN VIEW OF CORNER WITH TIES TO AT LEAST 4 WITNESS MONUMENTS. IF IN DISAGREEMENT WITH PREVIOUSLY ESTABLISHED CORNER, SHOW THE DISTANCES BETWEEN THE TWO CORNERS AND ALSO INDICATE THE TIES TO THE DISPUTED CORNER.



(i) I, DAVID L. OSTERBRINK RLS # S-2014
 (TYPE OR PRINT NAME) CERTIFY THAT THE CORNER LOCATION ON THIS RECORD WAS DETERMINED BY ME OR UNDER MY DIRECTION AND CONTROL AND THAT THIS U.S. PUBLIC LAND SURVEY MONUMENT RECORD IS CORRECT AND COMPLETE TO THE BEST OF MY KNOWLEDGE AND BELIEF.

David L. Osterbrink 12-8-05
 SIGNATURE DATE



STAMP