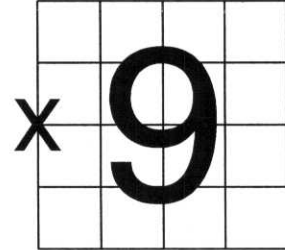


U.S. PUBLIC LAND SURVEY MONUMENT RECORD

NOTE: THIS FORM IS INTENDED AND DESIGNED TO FULFILL ALL REQUIREMENTS OF WISCONSIN ADMINISTRATIVE CODE, CHAPTER LAND SURVEY MONUMENT RECORD (3) (a) (b) (c) (d) (e) (f) (g) (h) (i). AN ADDITIONAL SHEET MAY BE ADDED IF NECESSARY TO CONFORM WITH SAID REQUIREMENTS. A-E 7.08 U.S. PUBLIC

(a) CORNER LOCATION: TOWNSHIP 33 NORTH
 RANGE 4 EAST ~~WEST~~
 TOWN/CITY/VILLAGE CORNING
 COUNTY LINCOLN



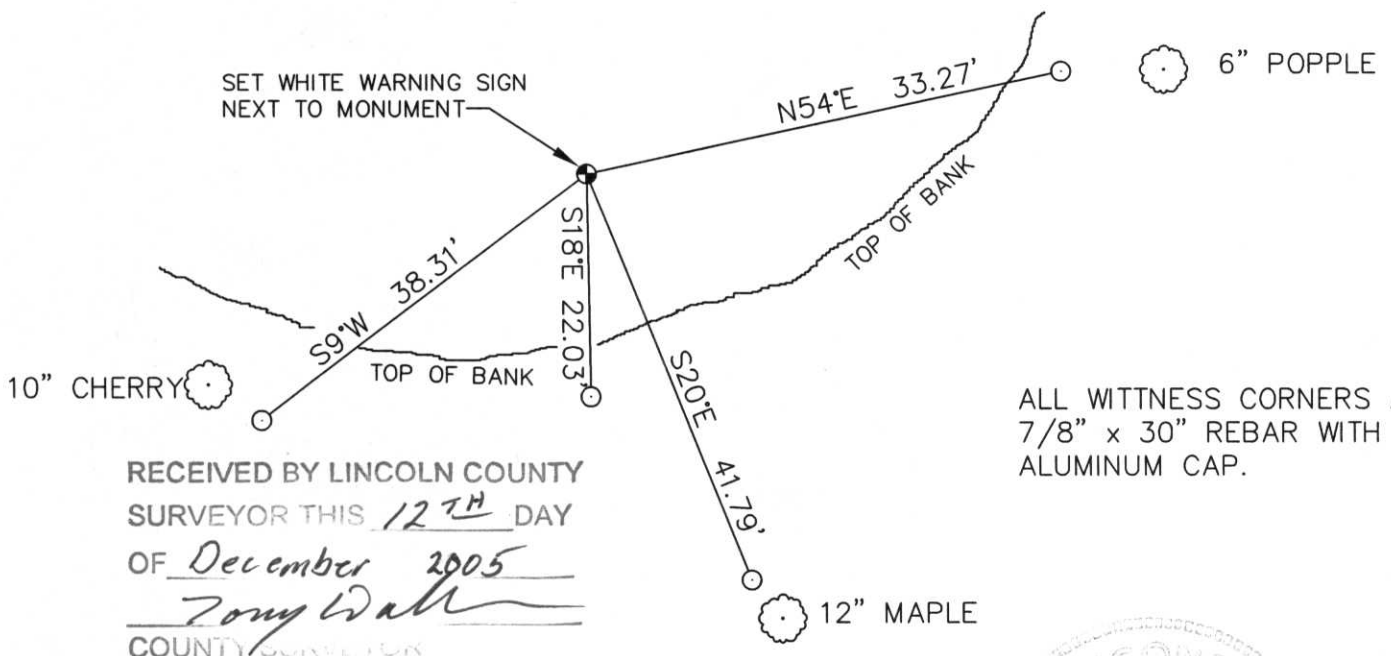
SECTION _____

(b) (f) (g) (h) DESCRIPTION OF MONUMENT FOUND AT THIS CORNER AND IF IT WAS ACCEPTED, STATE ALL EVIDENCE (MATERIAL, TESTIMONIAL, OCCUPATIONAL, PLATS, RECORDS, OTHER MONUMENTS) USED AS BASIS FOR ACCEPTING. IF NOT ACCEPTED OR IF NOTHING WAS FOUND, STATE EVIDENCE USED AS BASIS FOR ESTABLISHING LOCATION. IF REESTABLISHED THROUGH LOST CORNER PROPORTIONATE METHODS, INDICATE ALL MONUMENTS, DISTANCES AND DIRECTIONS USED TO ESTABLISH. INDICATE TYPE OF MONUMENT FOUND OR SET AND SIGN POST.

USING HAND HELD GPS, WALKED INTO CORNER LOCATION. FOUND A 1" x 5' IRON PIPE, PAINTED, WITH A SQUARED OFF WOOD POST WITH SCRIBED SECTION NUMBERS, LAYING ON GROUND. LINE TO EAST IS PAINTED AND HAS RIBBON ALONG IT. LAND TO THE SOUTHWEST HAD BEEN LOGGED OFF, UP TO THIS CORNER. OWENS - ILLINOIS TIE SHEET ON RECORD IN LINCOLN COUNTY SURVEYORS OFFICE, SAYS THIS CORNER WAS "ESTABLISHED" IN 1958. FOUND NO OTHER EVIDENCE FOR CORNER. HELD AS WEST 1/4 CORNER. REMOVED IRON PIPE AND SET LINCOLN COUNTY BERNTSEN MONUMENT. CORNER FALLS ON STEEP SLOPE, ABOUT 15 FEET FROM THE TOP OF BANK. SET WITNESS CORNERS, AND SHOT DISTANCES WITH EDM. DISTANCES SHOWN ARE HORIZONTAL DISTANCES.

DISTANCES TO NORTH AND SOUTH MATCH OWENS ILLINOIS TIE SHEET. ORIGINAL FIELD NOTES CALL FOR "STREAM 20 LINKS WIDE RUNS NE" @ 379 FEET FROM CORNER. THIS VISUALLY MATCHES STREAM LOCATION TODAY.

(c) (d) (e) PLAN VIEW OF CORNER WITH TIES TO AT LEAST 4 WITNESS MONUMENTS. IF IN DISAGREEMENT WITH PREVIOUSLY ESTABLISHED CORNER, SHOW THE DISTANCES BETWEEN THE TWO CORNERS AND ALSO INDICATE THE TIES TO THE DISPUTED CORNER.



ALL WITNESS CORNERS ARE 7/8" x 30" REBAR WITH ALUMINUM CAP.

(i) I, DAVID L. OSTERBRINK RLS # S-2014
 (TYPE OR PRINT NAME) CERTIFY THAT THE CORNER LOCATION ON THIS RECORD WAS DETERMINED BY ME OR UNDER MY DIRECTION AND CONTROL AND THAT THIS U.S. PUBLIC LAND SURVEY MONUMENT RECORD IS CORRECT AND COMPLETE TO THE BEST OF MY KNOWLEDGE AND BELIEF.

David L. Osterbrink 12-8-05
 SIGNATURE DATE



INDEX NO. 6-9

STAMP



STAY OFF OLD COUNTRY
FOR DISTURBING
MARKER PENNANTS
EMERGENCY

5
S







