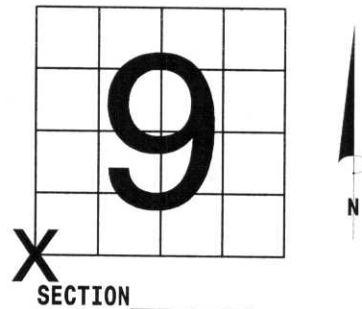


U.S. PUBLIC LAND SURVEY MONUMENT RECORD

NOTE: THIS FORM IS INTENDED AND DESIGNED TO FULFILL ALL REQUIREMENTS OF WISCONSIN ADMINISTRATIVE CODE, CHAPTER A-E 7.08 U.S. PUBLIC LAND SURVEY MONUMENT RECORD (3) (a) (b) (c) (d) (e) (f) (g) (h) (i). AN ADDITIONAL SHEET MAY BE ADDED IF NECESSARY TO CONFORM WITH SAID REQUIREMENTS.

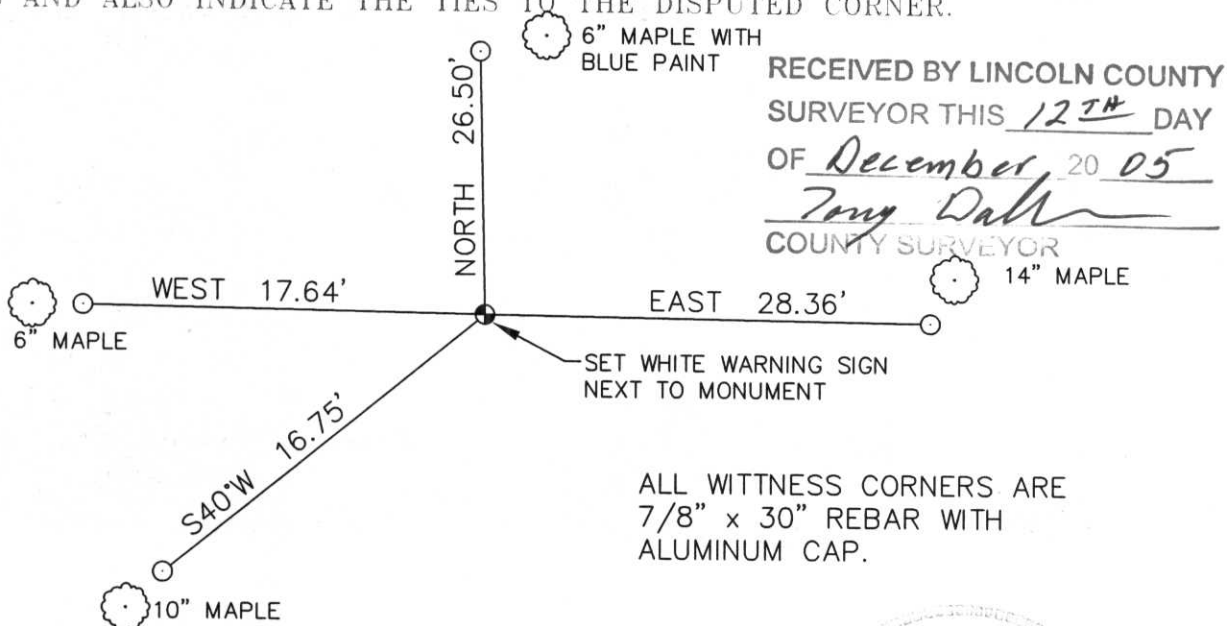
(a) CORNER LOCATION: TOWNSHIP 33 NORTH
 RANGE 4 EAST/~~WEST~~
 TOWN/CITY/VILLAGE CORNING
 COUNTY LINCOLN



(b) (f) (g) (h) DESCRIPTION OF MONUMENT FOUND AT THIS CORNER AND IF IT WAS ACCEPTED, STATE ALL EVIDENCE (MATERIAL, TESTIMONIAL, OCCUPATIONAL, PLATS, RECORDS, OTHER MONUMENTS) USED AS BASIS FOR ACCEPTING. IF NOT ACCEPTED OR IF NOTHING WAS FOUND, STATE EVIDENCE USED AS BASIS FOR ESTABLISHING LOCATION. IF REESTABLISHED THROUGH LOST CORNER PROPORTIONATE METHODS, INDICATE ALL MONUMENTS, DISTANCES AND DIRECTIONS USED TO ESTABLISH. INDICATE TYPE OF MONUMENT FOUND OR SET AND SIGN POST.

THIS CORNER IS SHOWN ON THE OWENS-ILLINOIS TIE SHEET, ON RECORD IN THE LINCOLN COUNTY SURVEYORS OFFICE. I DROVE TO THE CORNER, FOUND A 1" x 5' IRON PIPE. PAINT LINES GOING EAST AND SOUTH. A SQUARED WOOD POST WITH SCRIBED SECTION NUMBERS WAS FOUND LAYING NEAR PIPE. FOUND NO OTHER EVIDENCE FOR CORNER. PULLED PIPE AND SET A LINCOLN COUNTY BERNSTEN MONUMENT. TIED OUT.

(c) (d) (e) PLAN VIEW OF CORNER WITH TIES TO AT LEAST 4 WITNESS MONUMENTS. IF IN DISAGREEMENT WITH PREVIOUSLY ESTABLISHED CORNER, SHOW THE DISTANCES BETWEEN THE TWO CORNERS AND ALSO INDICATE THE TIES TO THE DISPUTED CORNER.



ALL WITNESS CORNERS ARE 7/8" x 30" REBAR WITH ALUMINUM CAP.

(i) I, DAVID L. OSTERBRINK RLS # S-2014
 (TYPE OR PRINT NAME) CERTIFY THAT THE CORNER LOCATION ON THIS RECORD WAS DETERMINED BY ME OR UNDER MY DIRECTION AND CONTROL AND THAT THIS U.S. PUBLIC LAND SURVEY MONUMENT RECORD IS CORRECT AND COMPLETE TO THE BEST OF MY KNOWLEDGE AND BELIEF.

David L. Osterbrink 12-8-05
 SIGNATURE DATE



INDEX NO. I-9

STAMP