

LINCOLN COUNTY U.S. PUBLIC LAND TIE SHEET RECORD

SECTION 5
TOWNSHIP 33N
RANGE 4 E

53344
NO.

CORNING
CITY, VILLAGE, TOWN

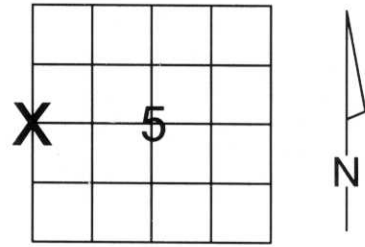
LANDMARK

CORNER INDENTITY: 1.5" IRON PIPE

LINCOLN COUNTY COORDINATE: N: 193391.915
E: 306967.943

DATE OF SURVEY: January 28, 2008
SURVEY PARTY: Eron

FOUND
SET
RE-SET
RE-TIED



SECTION

Description of monument found at this corner and if was accepted, state all evidence (material, testimonial, occupational, plats, records, other monuments) used as a basis for accepting. If not accepted or if nothing was found, state evidence used as basis for establishing location. If reestablished through lost corner proportionate methods, indicate all monuments, distances and directions used to establish.

BASIS FOR MONUMENT LOCATION:

(DESCRIBE METHOD OF SURVEY AND CORNER AUTHENTICATION)
Found 1.5" Iron Pipe at corner. Property evidence, comparison to survey done by Owens-Illinois in 1967, and comparison to the original notes supports the 1.5" Iron Pipe as corner.



CWE, Inc.

5707 SCHOFIELD AVE.
WESTON, WISCONSIN
54476

PHONE: (715) 359-9400
FAX: (715) 355-4199

general@cwengineers.com
www.cwengineers.com

CERTIFIED CORRECT:

Ronald Jacobson

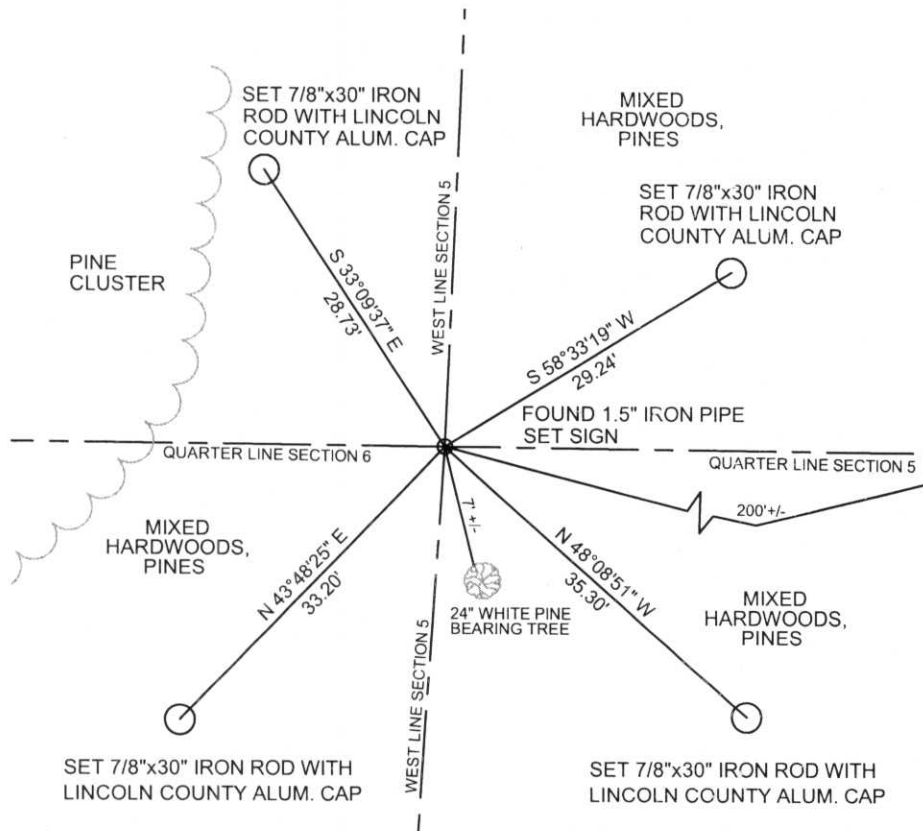
Ronald Jacobson RLS 2059-008

Registered Land Surveyor

DATE: February 5, 2008

TIE SKETCH:

SHOW MINIMUM OF FOUR (4) HORIZONTAL TIE DISTANCES TO FIXED WITNESS MONUMENTS.
DESCRIBE ALL MONUMENTS FOUND OR SET. ALL DISTANCES SHOWN IN US SURVEY FEET.



RECEIVED BY LINCOLN COUNTY
SURVEYOR THIS 21ST DAY
OF February 20 08
Tony O'Brien
COUNTY SURVEYOR

COORDINATES ARE REFERENCED TO LINCOLN COUNTY COORDINATE SYSTEM AS DEVELOPED BY THE WI. DEPARTMENT OF TRANSPORTATION AND ARE BASED ON GPS OBSERVATIONS TO CONTROL POINTS AS SUPPLIED BY LINCOLN COUNTY.



NOT TO SCALE
BEARINGS REFERENCED TO LINCOLN COUNTY COORDINATE SYSTEM

C-5

Picture 3 – Looking South From Corner at Bearing Tree



Picture 4 – Looking West From Corner



Picture 5 –Found 1.5 inch Iron Pipe at Corner

